



## CastleRock ICAP Series NFPA 285 Installation Guide (For Stone and Porcelain Panels)

### Laboratory Testing Information and Listings:

Intertek Laboratories - Warnock Hersey Test Reports W/N 20269  
Intertek Laboratories - test reports available at [www.spec-direct.com](http://www.spec-direct.com)  
Installation Guides available at [www.ICAP-USA.com](http://www.ICAP-USA.com)  
Or by contacting us at [les@castlerockx.com](mailto:les@castlerockx.com)

Testing conducted in accordance with the following:

Evaluation Guide: ICC EG 315

**ASTM E330(2002):** "Standard Test Method for Structural Performance for Exterior Windows, Doors, Skylights and Curtain Walls by Static Air Pressure Difference"

**ASTM E84(2009) -08a** "Standard Test Method for Surface Burning Characteristics of Building Materials"

**CAN/ULC S102 (2007)** "Standard Test Method for Surface Burning Characteristics of Building Materials"

**ASTM C578** "Standard Test Methods for EPS Foam"

**NFPA 285:** Standard Fire Test Method for Evaluation of Fire Propagation Characteristics of Exterior Non-Load-Bearing Wall Assemblies Containing Combustible Components

**ANSI A137.1-2012** American National Standard Specifications for Ceramic Tile - Version 2013.1

**ASTM C373** Standard Test Methods for Determination of Water Absorption and Associated Properties by Vacuum Method for Pressed Ceramic Tiles and Glass Tiles and Boil Method for Extruded Ceramic Tiles and Non-tile Fired Ceramic Whiteware Products

### Summary

**ASTM E84,**

**CAN/ULC S102 (2007)**

**Flame Spread Rating:** Zero

**Smoke Generation Rating:** Zero

**ASTM E330(2002)** "Standard Test Method for Structural Performance of Exterior Windows, Doors, Skylights and Curtain Walls by Static Air Pressure Difference"

Ultimate Load: See Fastener Table for various load ratings

## Workmanship

This Installation Guide assumes the construction personnel have knowledge of the materials described and their proper methods of installation. The manufacturer recommends certified installers be used to install ICAP products. Installer certification is available through the ICAP-USA "Factory Certified Installer" program. Contact us at 208- 895-8557 for details.

## Preparation

Prior to commencing activity related to the scope of this Guide, review all adjacent products and other subcontractor work that precedes the installation of ICAP- USA cladding ensure proper workmanship is reflected and that there are no recognizable errors or deficiencies.

## Building Code Requirements

Building code requirements vary from area to area. Check with local authorities for building code requirements for your area and application. Carefully read all sections of this guide and follow the manufactures Installation Instructions before proceeding with your ICAP application. In the event the local building codes conflict with other statements made in this document, contact the manufacture for additional guidance.

## Material Requirements:

## Flashing

All flashing and flashing accessories must be corrosion resistant materials and integrated with the WRB materials or flashings recommended by the air/water resistant barrier manufacturer for use with their products. Flashing must be installed at all through the wall penetrations and at terminations of ICAP panel system, around doors, windows and other protrusions in accordance with local building codes.

## Weep Screed

Some jurisdictions require weep screeds or termite barriers. These must be made of corrosion resistant metal a minimum of .019 inches or 26 gage thickness; or plastic weep screed a minimum of 0.050" with a minimum vertical attachment flange of 3 ½" wide.

### Walls and Wall Systems

ICAP-USA ICAP 285 Panels are designed to attach to the following wall substrates with manufacturer approved fasteners. See table on the next page to determine the appropriate fastener for your application.

#### Recommended Clearances:

- ICAP 285 Panels individually attach to the wall sheathing or studs and do not require a brick ledge support like masonry products.
- Check with your local building official for requirements above grade and concrete/paving in your area. (slope away from the structure in accordance with local building requirements)
- ICAP-USA™ is a cladding product and all components used in its manufacture are waterproof. Consult with your local building official regarding requirements in your area.

#### Cautions:

- Do not subject ICAP-USA™ Claddings to frequent water contact such as sprinklers or direct spray. Place downspouts or drainage pipes so the water is not frequently contact the cladding.
- Do no subject ICAP-USA™ to contact with de-icing materials, salt, asphalt roofing material or its drainage, or other harsh chemicals. Prolonged exposure may damage the fascia or panel.
- Do not expose the EPS foam portion of the panel to extended periods of sunlight. All surfaces for EPS must be covered with fascia, flashing, other materials to protect it from UV exposure.

# ICAP-USA Panels

## Installation Guide

	<u>R-Value</u>	<u>Height Range</u>	<u>Length Range</u>
<b>Flat Panels</b>	7-12	5" - 24"	20" - 126"
<b>Outside Corners</b>	7-12	5" - 24"	<i>N/A</i>
<b>Fire Barrier</b>	R-4.3-5.5	3-1/2"	3-1/2"

**Note: Maximum panels sizes are 24" x 126" and can be installed vertically or horizontally.**

<b><u>Tools Required</u></b>	
<b>Screw gun w/ adjustable torque chuck:</b>	
<b>Torque Drives: See Fastener Table</b>	
<b>Staple Gun for wood sheathing: 15/16" crown x 2-1/2" Leg</b>	
<b>Hot Knife Foam cutter &amp; grooving blade</b>	
<b>Hot Knife Table (for removing foam from back of the panels)</b>	
<b>Saws (Diamond Blade):</b>	
<b>Tile Saw wet cut with a diamond porcelain blade</b>	
<b>Circular Saw w/ wet/dry diamond porcelain blade</b>	
<b>4" Right Angle Grinder with porcelain diamond blade</b>	
<b>Scaffolding or manlift with an 8-foot-wide basket for 2 people</b>	
<b>Ladders</b>	
<b>Normal Carpentry and Construction Tools</b>	
<b>Safety Equipment</b>	

Pre-Engineered ICAPNFPA 285 compliant, Insulated Dekton or Porcelain Panels (900 Series) with Continuous Insulation, Tongue and Groove Interlock are available in custom sizes up to 24" x 126" with Butt-fit or mitered corners: Manufactured by: CastleRock Building Materials, Inc. DBA: ICAP/InsulStone DBA: ICAP-USA.

**A. Standard Flat Panels:**

1. Tile Manufacturer: \_\_\_\_\_
2. Style: \_\_\_\_\_
3. Color: \_\_\_\_\_
4. Standard Panel Sizes (Nominal Sizes)  
 Std. Width: 126" Inches ( \_mm) X Height: 24" Inches mm)  
 Width: 63 Inches ( \_mm) Height: 24inches ( mm)

**B. Specialty Panels**

1. Sizes:  
Up to 24" x 126"

2. Outside Corner Panels

Left Hand Corner Panel Porcelain

OCR10-LH...Porcelain

Right Hand Corner Panel

OCR19-RH...Porcelain

3. Fire Barrier Panels(for around doors/windows & wall penetrations)

4. Starter Strip

SSS-48

All fasteners require min. 1-1/4" diameter corrosion resistant fender washers. Some areas near salt water may require stainless steel fasteners and washers or 1,000-hour corrosion resistant screws. Check with your local building official for compliance in your area. (Note: ICAP fasteners are concealed in the foam and not exposed to exterior elements.

## CastleRock ICAP Fastener Chart

<u>VersaFast® Fasteners</u>	<u>Through tongue flange</u>	<u>Centers</u>	<u>Sheathing</u>	<u>Lbs./sq.ft.</u>
VF-3250	Fastener Spacing C-C	4"	5/8" Type X Gypsum	103.6
520591	Fastener Spacing C-C	16"	Metal Stud 16" Centers	88.0
<b>Fastener Descriptions</b>				
Gypsum Fastener	VersaFast VF-3250 (3-1/4")	4"	1-1/4" min. fender washer	
22-ga. min. Metal Stud	Self-drilling Torque® TEK	#10 x 3"	Metal Stud 22-gauge min.	

# Installation Guide for NFPA 285 Compliance (R=12 & R=7)

## Fascia Style: Dekton or Porcelain

### A). Interface with Other Work:

Coordinate with installation of substrate required for installation. If Electrical, Plumbing and other Mechanical penetrations are installed after the exterior siding panels are installed, provisions for watertight sealing of all penetrations must be addressed.

**B). General: Construct the wall in accordance with local building codes. In the absence of local building codes, install in accordance with the requirements of the IRC/IBC and the manufacturers' installation instructions. Use a qualified installer. Wall preparation and requirements:**

**A.** These instructions are for building structures in excess of 40 feet in elevation. **NFPA 285 over 40':** A metal framed wall with a minimum of 22-gauge nominal 2" x 6" corrosion resistant steel studs located a maximum of 24" on center and framed in compliance with local building codes.

**B. Substrate Sheathing: Non-load bearing walls for NFPA 285 compliance:** The metal frame wall is required to be sheathed with 5/8" fire rated Type X Gypsum manufactured by Dens Glass or GlasRoc or equivalent as approved by local building officials. .

**C. Air/Weather Resistant Barrier:** Required. **Special Instructions for NFPA 285:** A Liquid applied, Self-sealing, Air/Weather Resistant Barrier manufactured by the following manufacturers and listed for use with the ICAP NFPA 285 compliant system. The following manufacturers are recognized by ICAP and Intertek Laboratories for use with the ICAP system:

- **Tremco** brand identified as **EXOAIR 230** Air/weather barrier, flashing and components. <http://www.tremcosealants.com/products/exoair-230.aspx>
- **STO** brand identified as **gold** air/weather barrier. <http://www.stocorp.com/air-moisture-barriers/>
- **Master Wall** brand identified as **Roller Shield RS** air/weather barrier. <http://masterwall.com/rollershields/>

These manufacturers and products are recognized and required as part of the **ICAP NFPA 285 compliant system**. Check with your local building official for weather resistant barrier requirements and codes in your area. For details regarding the installation of each specific air/weather barrier system, see their instructions available on the websites listed above.

### C.). Flashings:

Install flashings in accordance with the air/weather barrier, window and roofing manufacturer's installation instructions, or in the absence of these instructions, install per section 703.8 of the 2009 International Residential Code (IRC) at the following locations:

- a). Top of all doors and windows. A metal flashing is required at the top of each window, door, and protrusion to prevent water from entering the wall cavity.
- b). Flashing may be required at projecting lips or conversion to masonry or other sheathing, or an area that may allow water to enter.

Check with your local building official for requirements in your area.

### D). Installation of ICAP Interlocking Insulated Substrate Panels:

- a. **Inspect the wall to assure correct fit of substrates and framing. Studs: 24" or less on center with the Approved type X Gypsum sheathing as shown in this manual with the recognized air/weather resistant barrier listed above and as prescribed by the manufacturer and local building codes.**
- b. **Prior to installation** of the starter section, determine its desired location in regard to elevation and relationship with the foundation, grade and sidewalks, driveways, etc. Panels may be trimmed to fit at openings. See instructions in this manual for details of termination points.
- c. **Install the Starter Section (Part# SSS-048)** - Install the starter section at the bottom of area where the panels are to be installed in conformance with local building codes and overlap the starter metal a minimum of 1" over the foundation. If codes are not present, the manufacturer recommends a minimum of 6" above grade and 2" above pavement surfaces. Attach the starter section with corrosion resistant screws or nails to the sheathing or plate every 6 inches on center.

## PAJRT 3 IEXIECUTION

### 3\_1 EXAMINIATION

- A Do **not** begin installation until the substrates have been properly installed.
- B\_ If substrate preparation is the responsibility of another installer, notify Architect of unsatisfactory preparation before proceeding.
- C\_ Waterresistive barrier shall conform to ICC-ES AC38 acceptance criteria.  
The NFPA 285 Air/water barrier system is required to be Tremco Exo Air 230 system, or Guard Gold Coat.

### 3-2 PREPARATION

- A Clean surface thoroughly prior to installation.
- B\_ Protection: Preven work from occurring on the opposite walls to which cladding is being applied.

### 3\_3 INSTALLATION

- A Installation as shown on drawings and as specified in accordance with manufacturer's installation instructions. Panels are designed to be installed from left to right !Install from left to right whenever possible.
- B\_ Weather-Resistant Barrier Installation  
Install the weather-resistant barrier in strict accordance with the manufacturer's installation instructions. To meet NFPA 285 compliance requirements, use the Tremco ExoAir 230 system or STO Guard Gold Coat as the designated Air/Weather barrier.  
Ensure the use of appropriate flashings installed as specified and recommended by the manufacturer's installation instructions.
- C\_ Install flashing as shown\_  
Flashing and flashing accessories shall be corrosion resistant materials and integrated with the wea1iher barrier materials. Flashing shall be installed at all through-wall penetrations and at terminations of the panel system, around doors, openings and other protrusions in accordance with local building code. Install flashing around penetrations and terminations of the veneer application. Install flashing to divert water run-off away from the finished surface area.
- D\_ PATTERNS AND LAYOUT  
  
Determine the area to be covered with ICAP Panels and layout the pattern per panel size, corners, window, door, perimeter panels and t:ransition components if required. Refer to pla111s for locations of various panel sizes and types.
- E. WINDOW/DOORS/FIRE BARRIER TRIM  
  
After installing the flashings around each window/door/wall penetration, wrap them with the Fireboards as shown in Drawings.

## F. INSTALLING CLADDING PANELS

1. **STARTER SECTIONS:** Determine the location of the bottom panels and install the J-hook shaped "starter section" Part # SSS-048 at bottom of the wall and lap it a minimum of 1" (25.4 mm) over the foundation. Attach every 6" (152.4mm) to the plate or studs with appropriate fasteners. Note: ICAP panels will hang  $\frac{3}{4}$ " below the bottom of the j-hook starter. Check local building codes for code requirements above grade and sidewalks, etc. In the absence of local codes, locate the panels 2 inches (50.8 mm) above sidewalks, pavement etc. and 4 inches (101.6 mm) Above grade.
2. Begin by installing from the corner of the building aligning the first panel to fit to the panels from the adjacent walls with the tongue upward.
3. Upon reaching the bottom of an opening, cut the panels to fit to the fire board opening trim (Part# TRM-S08).

## G. INSTALLING PANELS AROUND OPENINGS

1. When you reach the bottom of the first opening, cut the porcelain to fit and remove the amount of foam to allow the gypsum and porcelain to fit over the Fire Barrier to the flashing.
2. Progress up the sides of the opening cutting and fitting the panels as required. It will be necessary to remove the foam from the back of the gypsum to allow the panels to slip over the fireboard.
3. In the area above the window, the width of the window and 96" above the window, will require the use of metal clips (CI-103 & CI-104) with screws as shown in Drawing #7 & 8.
4. The panels on the bottom and sides of the opening do not require the use of metal clips. Use the same fasteners you are using elsewhere on the structure.

## J. CORNERS

Outside Corners are usually made with a Butt or Mitered Corner with the porcelain. Butt Corner and Miter cut panels of Dekton can be special ordered and prefabricated corner components can be ordered from the factory. In the field you can notch (remove) the foam on one side as shown in Drawing #13 and align the panels for a tight fit. Foam can be cut at a 45-degree angle to fit the corner.

Inside Corners: See drawing #12.

Install panels until the last row will not fit under the soffit. Measure the distance between the top of the panel and the soffit. Cut the panel  $\frac{3}{4}$ " (19.05) shorter than the desired space. Install the panel by inserting it into the space between the uppermost panel and the soffit. The panel will slide down over the tongue of the panel below, leaving a space between the top of the cut panel and the soffit.

2. Screw the panel to wall through the tongue section on the sides of the panels. Install backer rod and sealant into the space between the top panel and soffit. See detail #12

## L PARAPETS

1. Install panels up to the height of the parapet. Remove (cut) the top panel to fit and attach to the wall. Install with a metal cap as shown in Drawing 14.

## 3.4 CLEANING

### A. Cleaning Veneer Units:

Wash with soft bristle brush and water/dish detergent solution or mild house cleaner.  
Rinse immediately with clean water.

## 3.5 PROTECTION

- A. Protect installed products until completion of project.
- B. Touch-up, repair or replace damaged products before Substantial Completion.

END OF SECTION

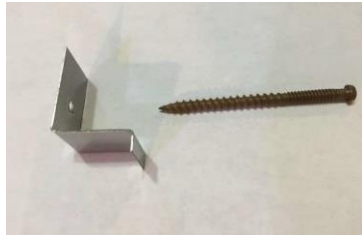




3103000



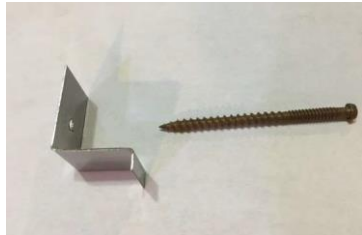
SCW10300



CLPT1200



CLPB1200



CLPT0800



CLPB0800

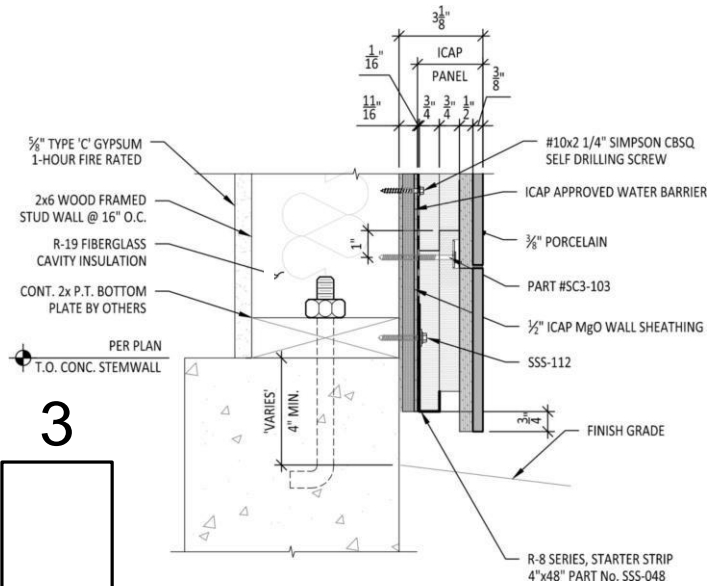


SC202000

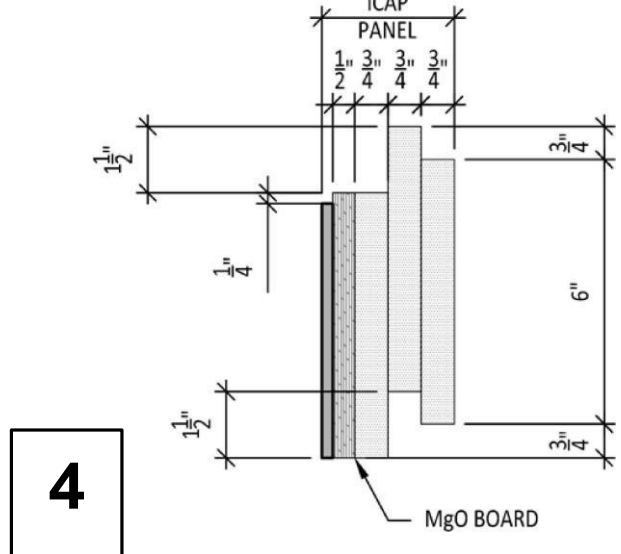


SSS4800

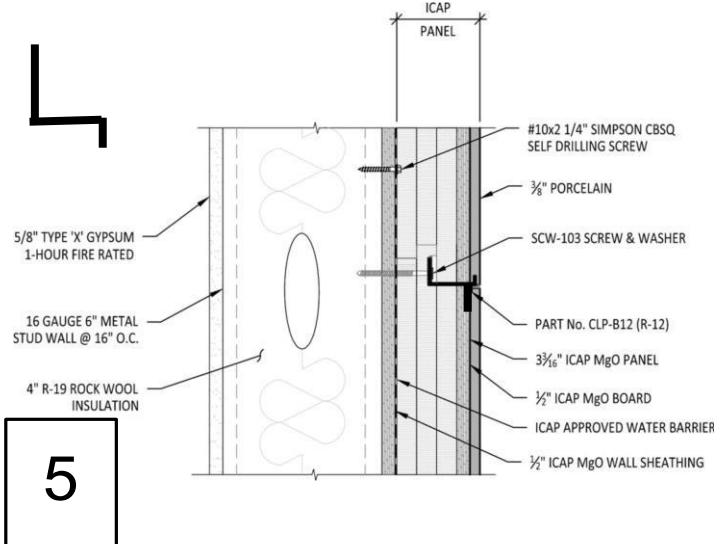
## ion and R-8.59 Dimensions NFPA 285



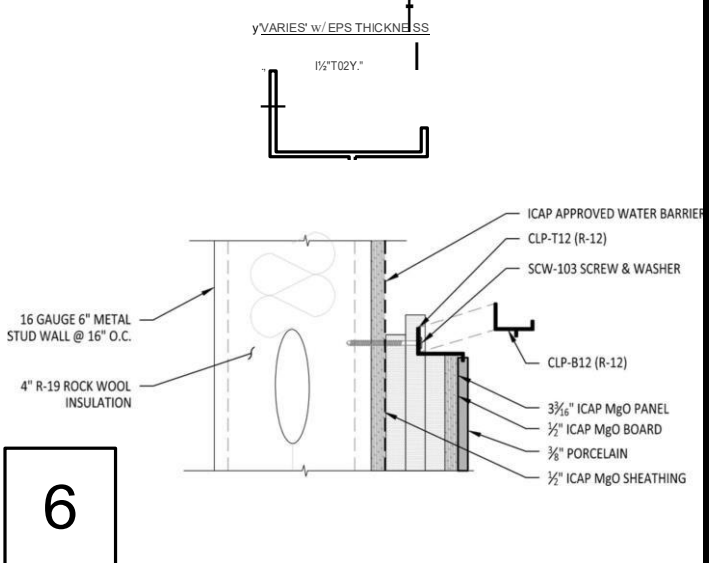
## R-12.25 Panel Dimensions NFPA 285



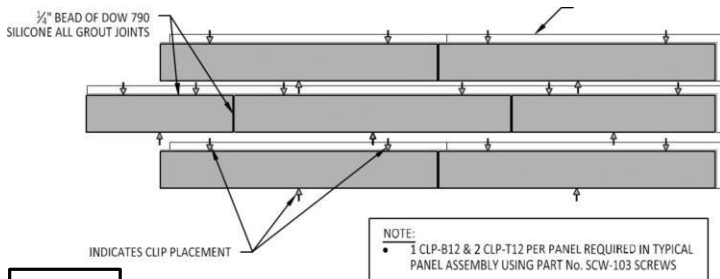
## R-12.25 / U-.0816 SERIES, TOP CLIP



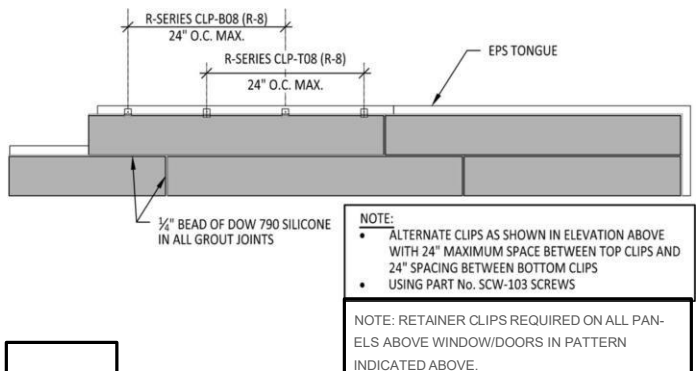
## R-12.25 / U-.0816 SERIES, BOTTOM CLIP



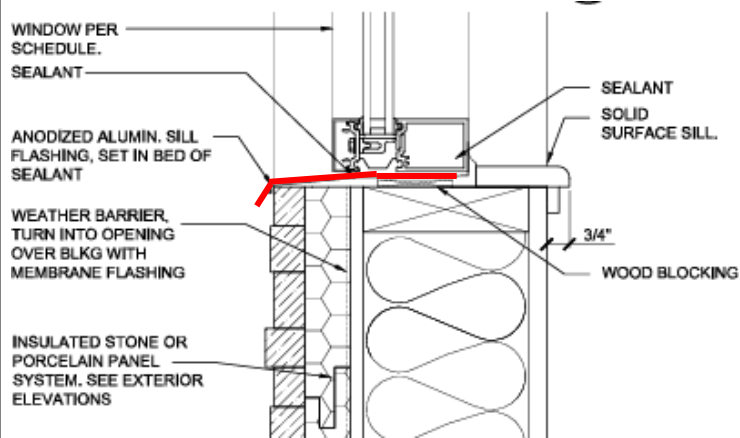
## Above Windows & Doors



## Retainer Clip Locations Above Windows & Doors

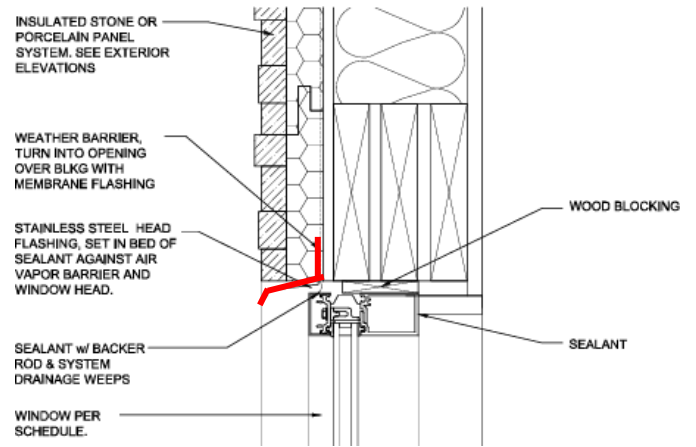


## Windowsill Flashing



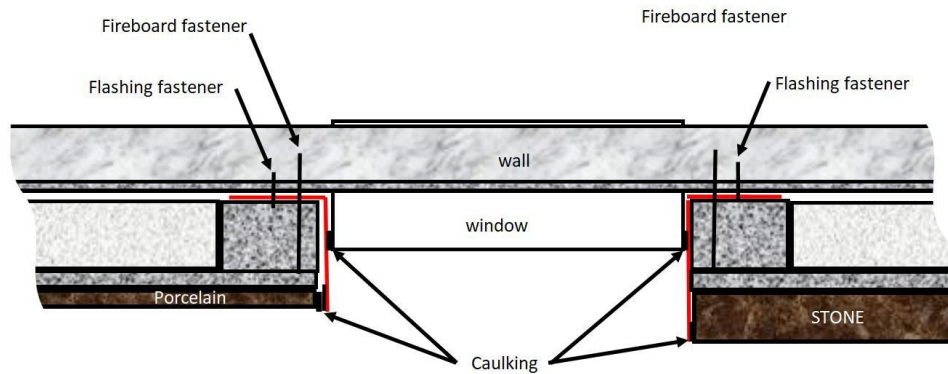
9

## Above Window Flashing



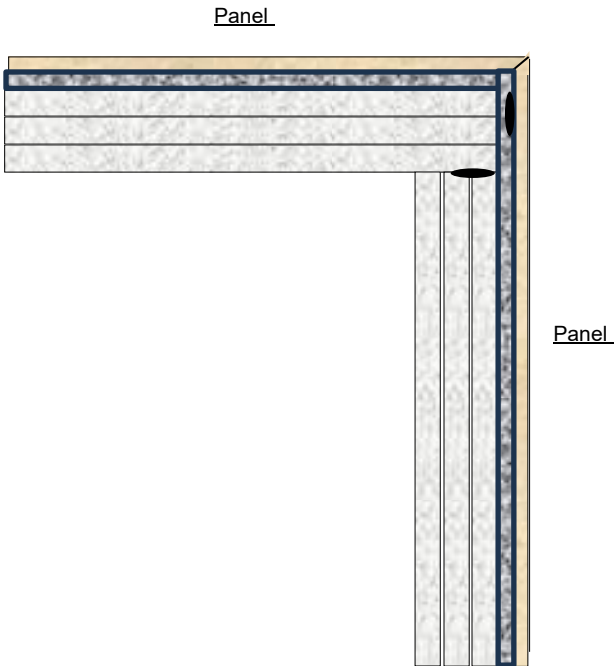
10

## Window Side Flashings



11

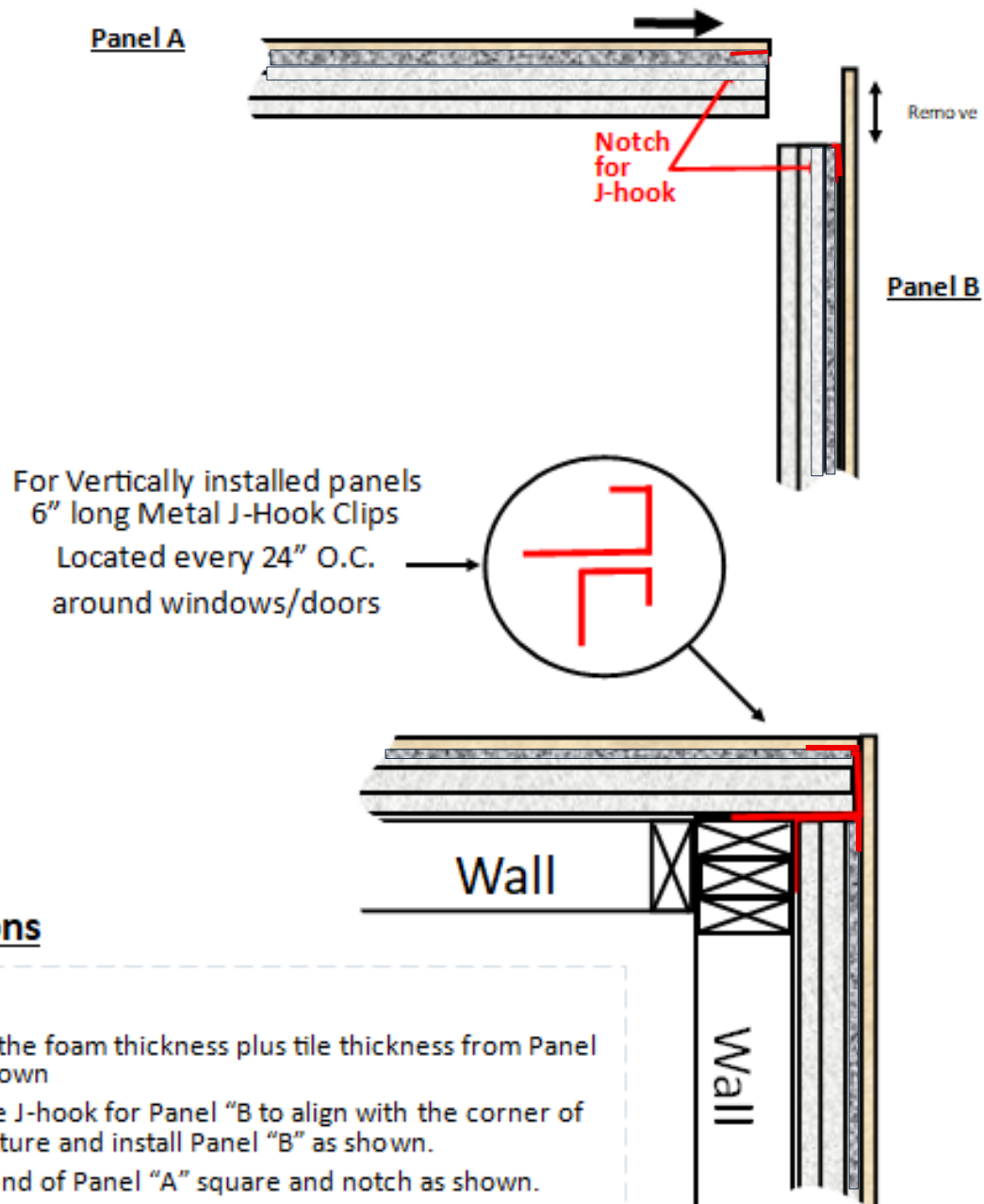
## Mitered Joints under 24"



Mitered Joint up to 24" high:

- 1) Remove foam and tile thickness from panel "B" as shown.
- 2) Square cut panel "A" as shown for miter joint to align.
- 3) Apply 1/4" dallops of ICAP adhesive as shown in the illustration every 4-6" on the foam.
- 4) Then, interlock the panels aligning the mitered joint and attach to the wall with the appropriate fasteners.

## Outside Butt-Corner for Panels over 24" high



### Instructions

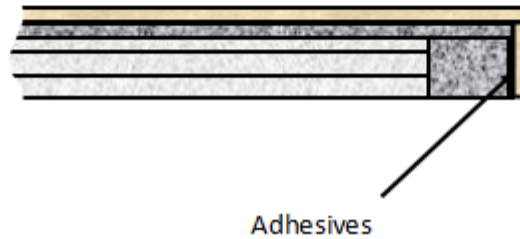
1. Remove the foam thickness plus tile thickness from Panel "B" as shown
2. Install the J-hook for Panel "B" to align with the corner of the structure and install Panel "B" as shown.
3. Cut the end of Panel "A" square and notch as shown.
4. Install Panel the J-hook for Panel "A" as shown and attach both Panels to the wall.
- 5.

Note: The sequence can be reversed if you are installing from the other direction.

## Porcelain Window Return Trim



1. Remove 2-7/8" of foam from Panel "A" as shown
2. Install Gypsum "Fire Block" around window opening
3. Apply adhesives to the end of the "FireBlock"



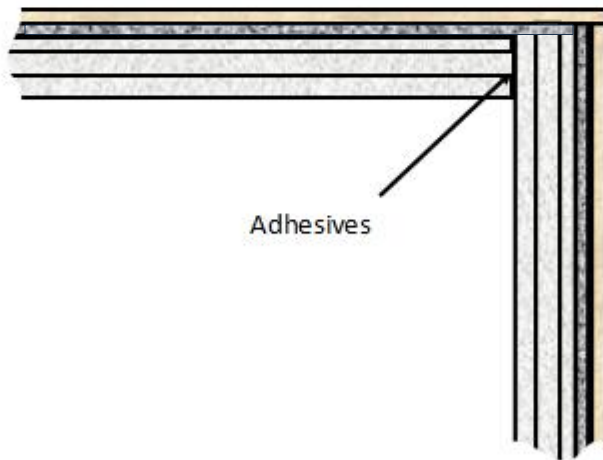
## Outside Butt-Corner

Panel A



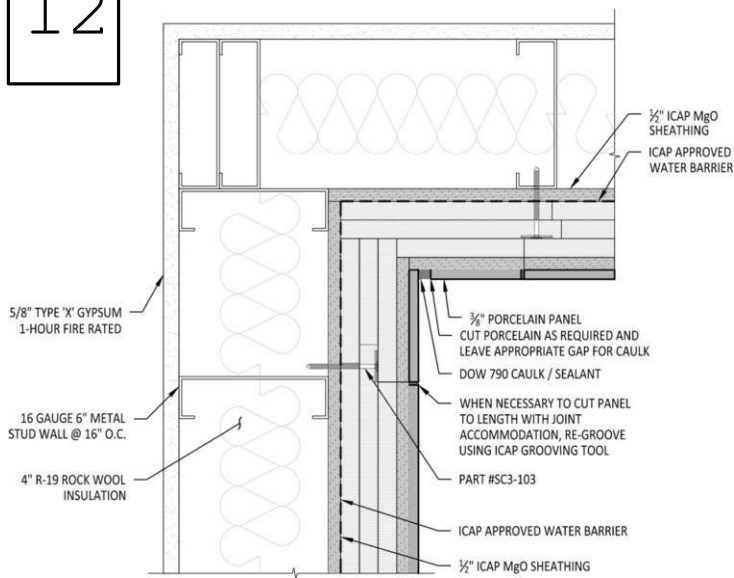
1. Remove 2-7/8" of foam & Gypsum from Panel "A" as shown
2. Cut end of panel "B" square

Panel B

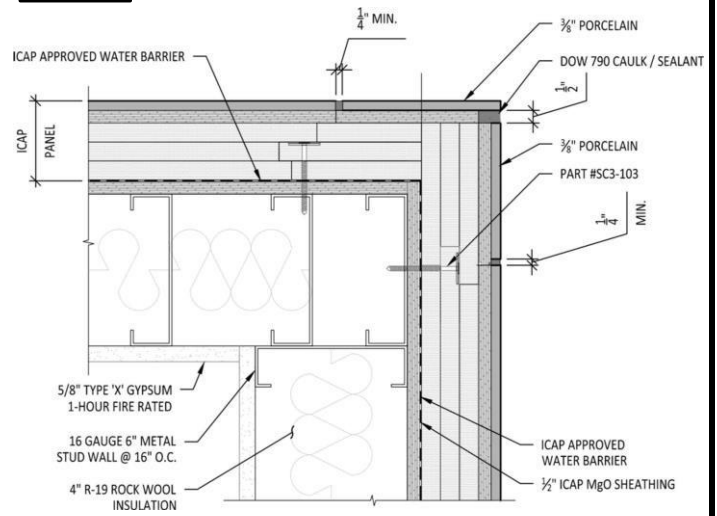


Adhesives

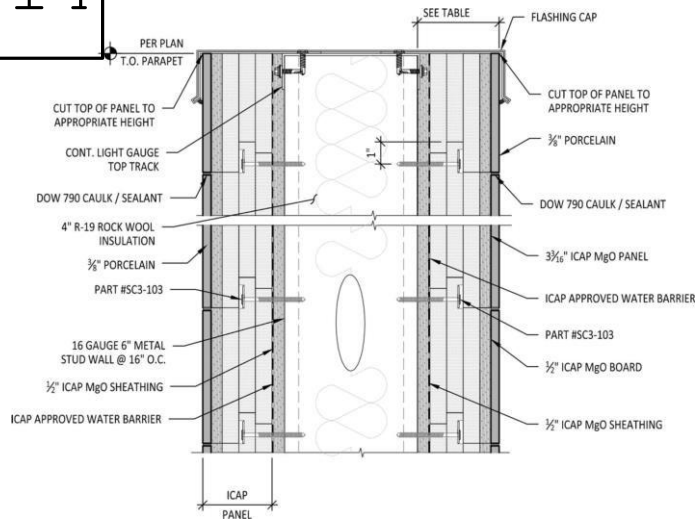
12



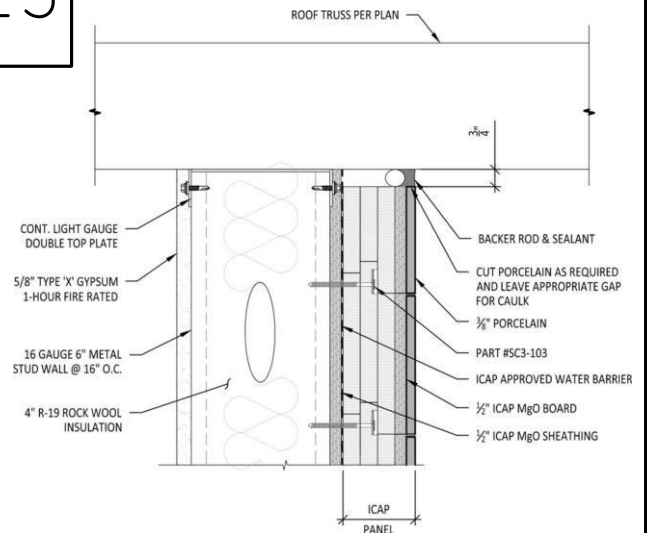
13



14



15



R-11.04 INSULATION TABLE

ICAP PANEL MATERIAL	TOTAL PANEL INCHES	MILLIMETERS	PANEL R-VALUE
EPS FOAM	2.00"	50.8	9.698
Type X Gypsum	.500"	12.7	R-1.0
BONDING ADHESIVE	.0625"	1.5875	
PORCELAIN	.375"	9.525	R-.34
TOTAL	2.9375	74.6125	R-11.04

NOTE:



# ICAP-USA

## Porcelain & Stone Maintenance Instructions

ICAP Porcelain Cladding can be installed in numerous design possibilities and a variety of looks. The Porcelain is easily cleaned due to the nature of the porcelain and its impervious surface. The grout joints are more vulnerable and should be treated carefully based on the type of grout :

### Routine Porcelain or Stone Tile Care

Regular, basic cleaning with warm water and mild soap is sufficient to keep porcelain cladding looking good. You can also use gentle, everyday multipurpose spray cleaner to remove hard water deposits and mildew. Do not use cleaning products that contain acids or ammonia (and other harsh chemicals) as these can damage grout and glazed surfaces of the tile. Cladding can be spray washed at normal residential water pressure levels or with low pressure washers. Do not hold nozzle closer than 24 inches from the tile or grout to avoid damage of force water between joints.

### Grout Care

100% Silicone Grout: This grouting method may be cleaned in the same manner as routine porcelain care described above. Be careful not to force water in the grout seams or damage the silicone.

Cementitious Grouts: This type of grout should not be cleaned until it is completely dried and cured, then the grout should be treated with a silicone sealer. Grout, the material used to fill the spaces between tiles, is porous, and sealing it at this time will simplify maintenance in the future (Epoxy grouts and 100% silicones grouts do not require a sealer). We recommend you apply a sealer at least twice a year for maximum stain protection over cementitious grouts.

### Heavy Duty Cleaning

Neglected or situations where extreme dirt, smog, mold, mildew or dust is common may require more intensive cleaning. Clean glazed wall tiles with a scouring powder or all-purpose cleaner applied to a non-metallic pad. Rinse and wipe dry. In extreme cases use a commercial tile cleaner, or apply a strong solution of an all-purpose, non oil-based cleaner or scouring powder paste. Let stand for five minutes, brush and scrub. Then rinse with clean water and wipe dry..

### Purchasing Maintenance Products

Ceramic tile and Natural Stone cleaning products and sealants may be purchased at your local home center or floor covering store. Consult the manufacturer of the cleaner or sealant for usage instructions and more detailed information about how its spe-

### DO NOT...

Use cleansers containing acid or bleach for routine maintenance.

Use wax cleaners, oil-based detergents or sealants to maintain your tile (sealants may be used on grout joints).

Use ammonia (it will discolor grout).

Use harsh cleaning aids like steel wool pads or scouring pads containing metal.

Use a cleaning agent that contains color.