

Insulated Exterior Porcelain Panels



Insulated Lap Siding (R-10)



Insulated Flush Siding (R-10)

CastleRock™

Easy to install porcelain panels for interiors or exteriors
Interlocking, mortarless, simplicity with staples or screws
No mess, no fuss

Mortarless & groutless, Interlock & screw or staple to the wall
They 're economical, fast and easy to install without the mess!

A lifetime of beauty, elegance and performance

Never paint again!

www.castlerockx.com



Insulated Porcelain Siding

Staple or Screw
Hidden Fastener System

Flush or Lap— Series

US Patent #8,176,701 B2

Canada Patent #2,588,294

6" x 36" Flush or Lap Siding Panels R-10 to R-30

Saddle Brook Collection



6" x 36" Saddle Brook—FARM HOUSE

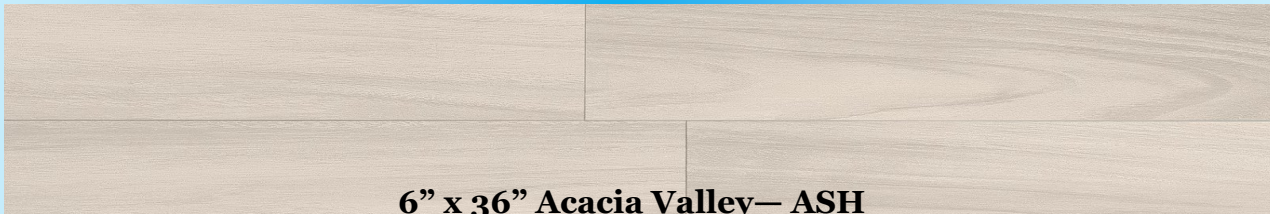


6" x 36" Saddle Brook—WALNUT CREEK



6" x 36" Saddle Brook—GRAVEL ROAD

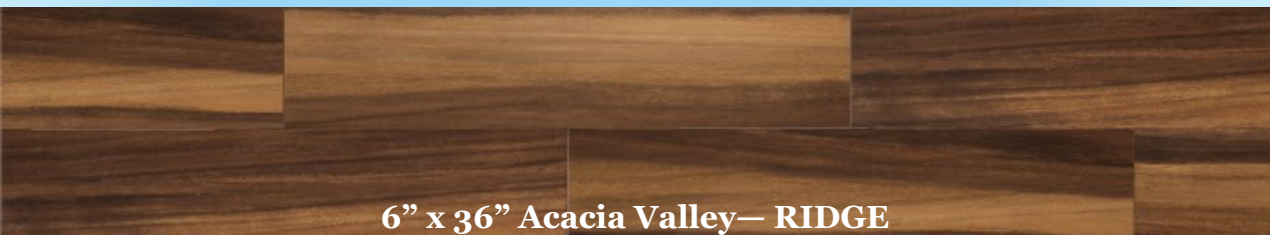
Acacia Valley Collection



6" x 36" Acacia Valley—ASH



6" x 36" Acacia Valley—ARK



6" x 36" Acacia Valley—RIDGE

Other styles and colors and samples available. Contact you area Daltile store or sales rep
www.castlerockX.com Meridian, ID 83642 208.859.4200



CastleRock™

Insulated - Mortar-less
Stone - Porcelain - Brick - Modular Panels

Insulated Porcelain Panels

Mortar-less, Split Stone Look

Interlocking Panels, Hidden Fasteners



Virtuo Bravura



Virtuo Maestro



Virtuo Composer

SPLIT STONE LOOK

Nominal Sizes: 8" x 48", 24" x 48", 12" x 24" & 24" x 24"

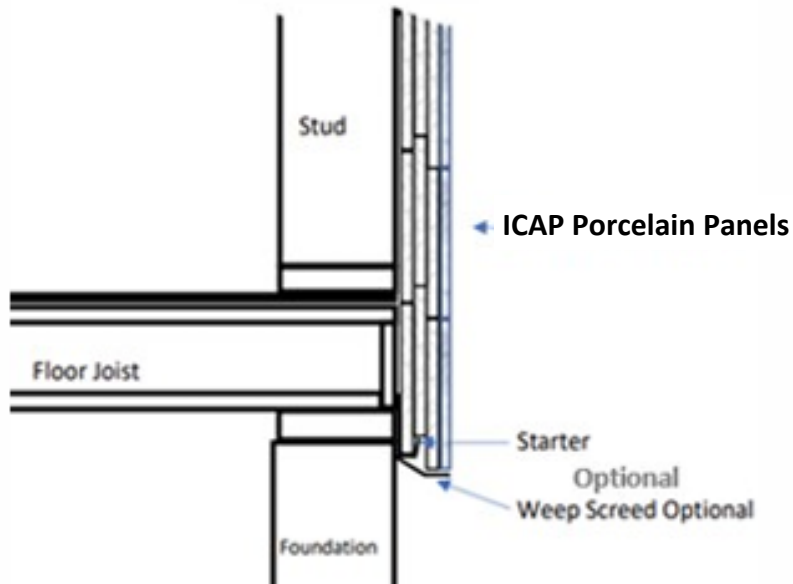
Porcelain is the most scratch resistant, fire proof building material available. Never paint or refinish again.

CastleRock™ Exteriors www.castlerockX.com 208-895-8557

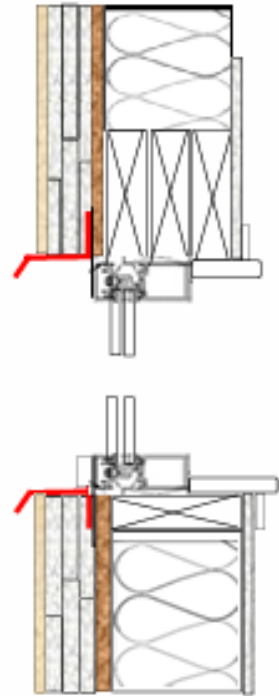
C-Series R-10 Installation Schematics

C-Series Insulated (R-10 thickness: 2-3/8")

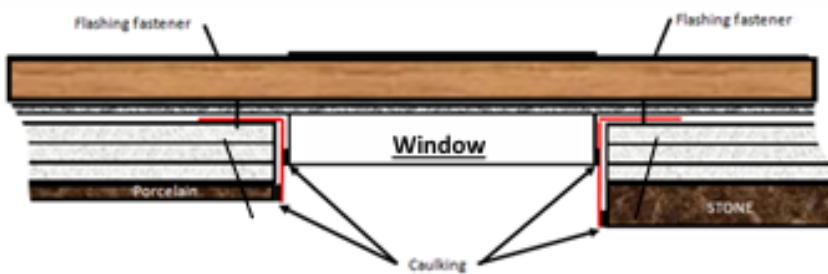
Starter



Above and Below Windows



Top View of window and side flashings



Outside Corner

