



# CastleRock<sup>TM</sup>

## CastleRock ICAP Series

### NFPA 285 Installation Guide

#### (For Stone and Porcelain Panels)

Patents USA: #8,176,701B2, Canada #2,588,294

#### Laboratory Testing Information and Listings:

Intertek Laboratories - Warnock Hersey Test Reports W/N 20269  
Intertek Laboratories - test reports available at [www.spec-direct.com](http://www.spec-direct.com)  
Installation Guides available at [www.ICAP-USA.com](http://www.ICAP-USA.com)  
Or by contacting us at [les@castlerockx.com](mailto:les@castlerockx.com)

Testing conducted in accordance with the following:

Evaluation Guide: ICC EG 315

**ASTM E330(2002):** "Standard Test Method for Structural Performance for Exterior Windows, Doors, Skylights and Curtain Walls by Static Air Pressure Difference"

**ASTM E84(2009) -08a** "Standard Test Method for Surface Burning Characteristics of Building Materials"

**CAN/ULC S102 (2007)** "Standard Test Method for Surface Burning Characteristics of Building Materials"

**ASTM C578** "Standard Test Methods for EPS Foam"

**NFPA 285:** Standard Fire Test Method for Evaluation of Fire Propagation Characteristics of Exterior Non-Load-Bearing Wall Assemblies Containing Combustible Components

**ANSI A137.1-2012** American National Standard Specifications for Ceramic Tile - Version 2013.1

**ASTM C373** Standard Test Methods for Determination of Water Absorption and Associated Properties by Vacuum Method for Pressed Ceramic Tiles and Glass Tiles and Boil Method for Extruded Ceramic Tiles and Non-tile Fired Ceramic Whiteware Products

#### Summary

**ASTM E84,**

**CAN/ULC S102 (2007)**

**Flame Spread Rating:** Zero

**Smoke Generation Rating:** Zero

**ASTM E330(2002)** "Standard Test Method for Structural Performance of Exterior Windows, Doors, Skylights and Curtain Walls by Static Air Pressure Difference"

Ultimate Load: See Fastener Table for various load ratings

## Workmanship

This Installation Guide assumes the construction personnel have knowledge of the materials described and their proper methods of installation. The manufacturer recommends certified installers be used to install ICAP products. Installer certification is available through the ICAP-USA "Factory Certified Installer" program. Contact us at 208- 895-8557 for details.

## Preparation

Prior to commencing activity related to the scope of this Guide, review all adjacent products and other subcontractor work that precedes the installation of ICAP-USA cladding ensure proper workmanship is reflected and that there are no recognizable errors or deficiencies.

## Building Code Requirements

Building code requirements vary from area to area. Check with local authorities for building code requirements for your area and application. Carefully read all sections of this guide and follow the manufacturer's Installation Instructions before proceeding with your ICAP application. In the event the local building codes conflict with other statements made in this document, contact the manufacturer for additional guidance.

## Material Requirements:

## Flashing

All flashing and flashing accessories must be corrosion resistant materials and integrated with the WRB materials or flashings recommended by the air/water resistant barrier manufacturer for use with their products. Flashing must be installed at all through the wall penetrations and at terminations of ICAP panel system, around doors, windows and other protrusions in accordance with local building codes.

## Weep Screed

Some jurisdictions require weep screeds or termite barriers. These must be made of corrosion resistant metal a minimum of .019 inches or 26 gage thickness; or plastic weep screed a minimum of 0.050" with a minimum vertical attachment flange of 3 ½" wide.

### Walls and Wall Systems

ICAP-USA ICAP 285 Panels are designed to attach to the following wall substrates with manufacturer approved fasteners. See table on the next page to determine the appropriate fastener for your application.

### Recommended Clearances:

- ICAP 285 Panels individually attach to the wall sheathing or studs and do not require a brick ledge support like masonry products.
- Check with your local building official for requirements above grade and concrete/paving in your area. (slope away from the structure in accordance with local building requirements)
- ICAP-USA™ is a cladding product and all components used in its manufacture are waterproof. Consult with your local building official regarding requirements in your area.

### Cautions:

- Do not subject ICAP-USA™ Claddings to frequent water contact such as sprinklers or direct spray. Place downspouts or drainage pipes so the water is not frequently contact the cladding.
- Do not subject ICAP-USA™ to contact with de-icing materials, salt, asphalt roofing material or its drainage, or other harsh chemicals. Prolonged exposure may damage the fascia or panel.
- Do not expose the EPS foam portion of the panel to extended periods of sunlight. All surfaces for EPS must be covered with fascia, flashing, other materials to protect it from UV exposure.

# ICAP-USA Panels

## Installation Guide

	<u>R-Value</u>	<u>Height Range</u>	<u>Length Range</u>
<b>Flat Panels</b>	7-12	5" - 24"	20" - 144"
<b>Outside Corners</b>	7-12	5" - 24"	<i>N/A</i>
<b>Fire Barrier</b>	R-4.3-5.5	3-1/2"	3-1/2"

**Note: Panels sizes are dictated by porcelain panel sizes. Check with ICAP for available sizes.**

<u>Tools Required</u>	
<b>Screw gun w/ adjustable torque chuck:</b>	
Torque Drives: See Fastener Table	
<b>Staple Gun for wood sheathing: 15/16" crown x 2-1/2" Leg</b>	
<b>Hot Knife Foam cutter &amp; grooving blade</b>	
<b>Hot Knife Table (for removing foam from back of the panels)</b>	
<b>Saws (Diamond Blade):</b>	
Tile Saw wet cut with a diamond porcelain blade	
Circular Saw w/ wet/dry diamond porcelain blade	
4" Right Angle Grinder with porcelain diamond blade	
<b>Scaffolding or manlift with an 8-foot-wide basket for 2 people</b>	
<b>Ladders</b>	
<b>Normal Carpentry and Construction Tools</b>	
<b>Safety Equipment</b>	

Pre-Engineered Insulated Porcelain Panels (900 Series) with Continuous Insulation Tongue and Groove Interlock: Manufactured by: CastleRock Building Materials, Inc. DBA: ICAP/InsulStone DBA: ICAP-USA

**A. Standard Flat Panels:**

1. Manufacturer:
2. Style: \_\_\_\_\_
3. Color: \_\_\_\_\_
4. Standard Panel Sizes (Nominal Sizes)
  - Width: \_\_\_\_\_ Inches ( \_\_\_\_\_ mm) Height: \_\_\_\_\_ Inches ( \_\_\_\_\_ mm)
  - Width: \_\_\_\_\_ Inches ( \_\_\_\_\_ mm) Height: \_\_\_\_\_ Inches ( \_\_\_\_\_ mm)
  - Width: \_\_\_\_\_ Inches ( \_\_\_\_\_ mm) Height: \_\_\_\_\_ Inches ( \_\_\_\_\_ mm)
5. Double Tongue Splice "T" (Splice groove to groove)

**A. Specialty Panels**

**1. Outside Corner Panels**

- Stone Left Hand Corner Panel
- Stone Right Hand Corner Panel
- Porcelain Left Hand Corner Panel
- Porcelain Right Hand Corner Panel

- OCR10-LH...Stone
- OCR10-RH...Stone
- OCR10-LH...Porcelain
- OCR19-RH...Porcelain
- s FBR10-48...Universal

**2. Fire Barrier Panels (for around doors/windows & wall penetrations as vents or air conducting penetrations) 2" x 3-1/2" x 48" sections**

**C. Flashings:**

- A. Sides of Window/Door/penetrations
- B. Above Window/Door/Penetrations
- C. Below Window/Door/Penetrations

- FLSR10-00
- FLAR10-00
- FLBR10-00

**J. Starter Strip**

SSS-48



<b>Fastener Chart For CastleRock/ICAP Panels</b>			
Type X Gypsum Sheathing, Wood or Metal Studs with OSB/Plywood Sheathing			
<b>5/8" Densglass Type X Gypsum</b>			
<b>Spax® Brand</b>	<b>Densglass® Type X Gypsum</b>	<b>ICAP Panel Size</b>	
		<b>up to 24" Narrow Direction</b>	<b>Lbs./sq.ft.</b>
1/4" Power Lag	Fasteners Spacing C-C	4"	103.6
	Fasteners Spacing C-C	6"	77.7
VersaFast™ VF-3250	Fasteners Spacing C-C	3"	92.2
	Fasteners Spacing C-C	4"	73.7
<b>5/8" GlasRoc Type X Gypsum</b>			
<b>Fastener</b>	<b>Sheathing</b>	<b>ICAP Panel Size</b>	
<b>Spax® Brand screws</b>	<b>GlasRoc® Type X Gypsum</b>	<b>up to 24" Narrow Direction</b>	<b>Lbs./sq.ft.</b>
1/4" Power Lag	Fasteners Spacing C-C	4"	136
1/4" Power Lag	Fasteners Spacing C-C	6"	102
VersaFast™ VF-3250	Fasteners Spacing C-C	4"	103.6
	Fasteners Spacing C-C	6"	77.3
Note: All Lbs./sq.ft. rating include ASTM E330 safety margin calculation			
<b>To Wood or Metal Studs with OSB/plywood Sheathing</b>			
<b>Fastener to Stud</b>			
<b>Metal Stud</b>	<b>Wood Stud &amp; Sheathing</b>	<b>Fastener to OSB/Plywood</b>	<b>Lbs./sq.ft.</b>
# 10x 1-1/4" TEK Screw	#10 x 1-1/4" Deck Screw	Studs & 4" O.C. to Sheathing	88
<b>Fastener to OSB/plywood Sheathing with Staples</b>			
<b>OSB/Plywood Sheathing</b>	<b>Fasteners to Studs</b>	<b>Fastener Spacing</b>	<b>Lbs./sq.ft.</b>
1" Crown x 2-1/2" Staples	Not Required	3" O.C.	126

All fasteners require min. 1-1/4" diameter corrosion resistant fender washers. Some areas near salt water may require stainless steel fasteners and washers or 1,000 hour corrosion resistant screws. Check with you local building official for code compliance in your area. (Note: ICAP fasteners are concealed in the foam and not exposed to exterior elements.

# ICAP-USA

## Installation Guide for NFPA 285 Compliance (R=12 & R=7)

Fascia Style: Porcelain or Stone

### A) Interface with Other Work:

Coordinate with installation of substrate required for installation. If Electrical, Plumbing and other Mechanical penetrations are installed after the exterior siding panels are installed, provisions for watertight sealing of all penetrations must be addressed.

### B) General: **Construct the wall in accordance with local building codes. In the absence of local building codes, install in accordance with the requirements of the IRC/IBC and the manufacturers' installation instructions. Use a qualified installer. Wall preparation and requirements:**

A. These instructions are for building structures in excess of 40 feet in elevation. **NFPA 285 over 40'**: A metal framed wall with a minimum of 22-gauge nominal 2" x 6" corrosion resistant steel studs located a maximum of 24" on center and framed in compliance with local building codes.

B. **Substrate Sheathing: Non-load bearing walls for NFPA 285 compliance:** The metal frame wall is required to be sheathed with 5/8" fire rated Type X Gypsum manufactured by Dens Glass or GlasRoc or equivalent as approved by local building officials. .

C. **Air/Weather Resistant Barrier:** Required. **Special Instructions for NFPA 285:** A Liquid applied, Self-sealing, Air/Weather Resistant Barrier manufactured by the following manufacturers and listed for use with the ICAP NFPA 285 compliant system. The following manufacturers are recognized by ICAP and Intertek Laboratories for use with the ICAP system:

- **Tremco** brand identified as **EXOAIR 230** Air/weather barrier, flashing and components. <http://www.tremcosealants.com/products/exoair-230.aspx>
- **STO** brand identified as **gold** air/weather barrier. <http://www.stocorp.com/air-moisture-barriers/>
- **Master Wall** brand identified as **Roller Shield RS** air/weather barrier. <http://masterwall.com/rollershieldrs/>

These manufacturers and products are recognized and required as part of the **ICAP NFPA 285 compliant system**. Check with your local building official for weather resistant barrier requirements and codes in your area. For details regarding the installation of each specific air/weather barrier system, see their instructions available on the websites listed above.

### C.). Flashings:

Install flashings in accordance with the air/weather barrier, window and roofing manufacturer's installation instructions, or in the absence of these instructions, install per section 703.8 of the 2009 International Residential Code (IRC) at the following locations:

- a) Top of all doors and windows. A metal flashing is required at the top of each window, door, and protrusion to prevent water from entering the wall cavity.
- b) Flashing may be required at projecting lips or conversion to masonry or other sheathing, or an area that may allow water to enter.

Check with your local building official for requirements in your area.

### D) Installation of ICAP Interlocking Insulated Substrate Panels:

- a. **Inspect the wall to assure correct fit of substrates and framing. Studs: 24" or less on center with the Approved type X Gypsum sheathing as shown in this manual with the recognized air/weather resistant barrier listed above and as prescribed by the manufacturer and local building codes.**
- b. **Prior to installation** of the starter section, determine its desired location in regard to elevation and relationship with the foundation, grade and sidewalks, driveways, etc. Panels may be trimmed to fit at openings. See instructions in this manual for details of termination points.
- c. **Install the Starter Section** (Part# SSS-048) - Install the starter section at the bottom of area where the panels are to be installed in conformance with local building codes and overlap the starter metal a minimum of 1" over the foundation. If codes are not present, the manufacturer recommends a minimum of 6" above grade and 2" above pavement surfaces. Attach the starter section with corrosion resistant screws or nails to the sheathing or plate every 6 inches on center.



## PART 3 EXECUTION

### 3.1 EXAMINATION

- A. Do not begin installation until the substrates have been properly prepared.
- B. If substrate preparation is the responsibility of another installer, notify Architect of unsatisfactory preparation before proceeding.
- C. Water resistive barrier shall conform to ICC-ES AC38 acceptance criteria. The NFPA 285 Air/weather barrier system is required to be Tremco ExoAir 230 system, or Guard Gold Coat.

### 3.2 PREPARATION

- A. Clean surfaces thoroughly prior to installation.
- B. Protection: Prevent work from occurring on the opposite walls to which cladding is being applied.

### 3.3 INSTALLATION

- A. Installation as shown on drawings and as specified in accordance with manufacturer's installation instructions. Panels are designed to be installed from left to right. Install from left to right whenever possible.
- B. Weather-Resistant Barrier:  
Installation of weather barrier and wall panels shall comply with local building code requirements or Authority Having Jurisdiction. Install weather barrier per manufacturer's installation instructions. The required Air/Weather barriers for NFPA 285 compliance are Tremco Exoair 230 system, or STO Guard Gold Coat. Use appropriate flashings as recommended as per the manufacturer's installation instructions.
- C. Flashing: Install flashing as shown.  
Flashing and flashing accessories shall be corrosion resistant materials and integrated with the weather barrier materials. Flashing shall be installed at all through-wall penetrations and at terminations of the panel system, around doors, windows and other protrusions in accordance with local building codes. Install flashing around penetrations and terminations of the veneer application. Install flashing to divert water run-off away from the finished surface area.
- D. PATTERNS AND LAYOUT
  - 1. Determine the area to be covered with ICAP Porcelain Panels and lay out the pattern per panel size, corners, window/door trims, window/door perimeter panels and transition components if required. Refer to plans for locations of various panel sizes and types.
- E. WINDOW/DOORS/FIRE BARRIER TRIM
  - 1. After installing the flashings around each window/door/wall penetration wrap them with the 2" x 3-1/2" Fireboards as shown in Drawing 11.

## F. INSTALLING CLADDING PANELS

1. STARTER SECTIONS: Determine the location of the bottom panels and install the J-hook shaped "starter section" Part# SSS-048 at bottom of the wall and lap it a minimum of 1" (25.4 mm) over the foundation. Attach every 6" (152.4mm) to the plate or studs with appropriate fasteners. Note: ICAP panels will hang ¾" below the bottom of the j-hook starter. Check local building codes for code requirements above grade and sidewalks, etc. In the absence of local codes, locate the panels 2 inches (50.8 mm) above sidewalks, pavement etc. and 4 inches (101.6 mm) Above grade.
2. Begin by installing from the corner of the building aligning the first panel to fit to the panels from the adjacent walls with the tongue upward.
3. Upon reaching the bottom of an opening, cut the panels to fit to the fire board opening trim (Part# TRM-S08).

## G. INSTALLING PANELS AROUND OPENINGS

1. When you reach the bottom of the first opening, cut the porcelain to fit and remove the amount of foam to allow the gypsum and porcelain to fit over the Fire Barrier to the flashing.
2. Progress up the sides of the opening cutting and fitting the panels as required. It will be necessary to remove the foam from the back of the gypsum to allow the panels to slip over the fireboard.
3. In the area above the window, the width of the window and 96" above the window, will require the use of metal clips (CI-103 & CI- 104) with screws as shown in Drawing #7 & 8. You will also need to seal the edges of the gypsum board seams with Dow 791 sealant as required for NFPA 285 compliance. Install sealant on the top and side edges of the lower gypsum panel prior to installing the upper panel.
4. The panels on the bottom and sides of the opening do not require the use of metal clips. Use the same fasteners you are using elsewhere on the structure.

## J. CORNERS

1. Outside Corners are usually made with a Butt Corner with the porcelain "Proud" on the highly visible side of the building. Butt Corner: Notch (remove) the foam on one side as shown in Drawing #13 and align the panels for a tight fit. Foam can be cut at a 45-degree angle to fit the corner.
2. Inside Corners: See drawing #12.

Note: Always lay out the panels so the factory porcelain end edge is exposed with the cut edge butting into the back of the factory edge.



Install panels until the last row will not fit under the soffit. Measure the distance between the top of the panel and the soffit. Cut the panel  $\frac{3}{4}$ " (19.05) shorter than the desired space. Install the panel by inserting it into the space between the uppermost panel and the soffit. The panel will slide down over the tongue of the panel below, leaving a space between the top of the cut panel and the soffit.

2. Screw the panel to wall through the tongue section on the side of the panels. Install backer rod and sealant into the space between the top panel and soffit. See detail #12

#### L PARAPETS

1. Install panels up to the height of the parapet. Install with a metal cap as shown in Drawing 14.

#### 4. CLEANING

##### A. Cleaning Veneer Units:

Wash with soft bristle brush and water/dish detergent solution or mild house cleaner.  
Rinse immediately with clean water.

#### 5. PROTECTION

A. Protect installed products until completion of project.

B. Touch-up, repair or replace damaged products before Substantial Completion.

END OF SECTION

## Fasteners



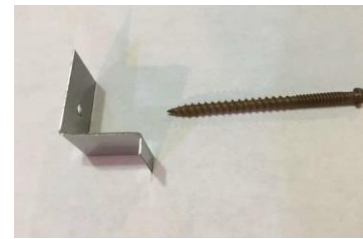
SC3103000

**Standard ICAP 3" Screw:** #9 min. x 2" Zinc Plated or Stainless Steel-T-25 Torque Drive, Course Auger Thread, Type 17 Point. Used to attach Panels and Window Side Trim.



SCW10300

**Standard ICAP Screw/Washer Assembly:** #9 x 3" Zinc Plated or Stainless Steel-T-25 Torque Drive, Course Auger Thread, Type 17 Point. Used to attach EPS Foam Panels to Studs. **Optional:** 1/4 x 2-1/2" SPAX Power Lags for Type X Gypsum sheathing



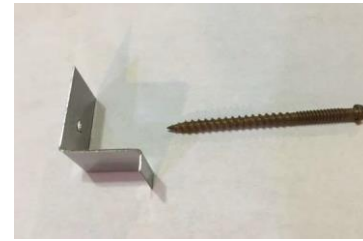
CLPT1200

**Top Metal Retainer Clip for R-12:** Fits into the space between the gypsum and porcelain and screws to through the foam tongue into the sheathing or stud. With #9 x 3" Zinc Plated or Stainless Screw, Full thread, Flat Head, T21 Torque drive. **Optional:** 1/4 x 2-1/2" SPAX Power Lags for Type X Gypsum sheathing.



CLPB1200

**Bottom Metal Retainer Clip for R-12:** Fits into the space between the gypsum and porcelain and screws to through the foam tongue into the sheathing or stud. **Optional:** 1/4 x 2-1/2" SPAX Power Lags for Type X Gypsum sheathing



CLPT0800

**Top Metal Retainer Clip for R-08:** Fits into a groove in the top of the porcelain and screws to through the foam tongue into the sheathing or stud. **Optional:** 1/4 x 2-1/2" SPAX Power Lags for Type X Gypsum sheathing **Optional:** 1/4 x 2-1/2" SPAX Power Lags for Type X Gypsum sheathing



CLPB0800

**Bottom Metal Retainer Clip for R-08:** Fits into a groove in the bottom of the porcelain and screws to through the foam tongue into the sheathing or stud. Zinc Plated or Stainless Steel



SC202000

**Starter Metal Screw:** #9 min. x 2" Zinc Plated or Stainless Steel-25 Torque Drive, Course Auger Thread, Type 17 Point. Used to attach Starter Strip.



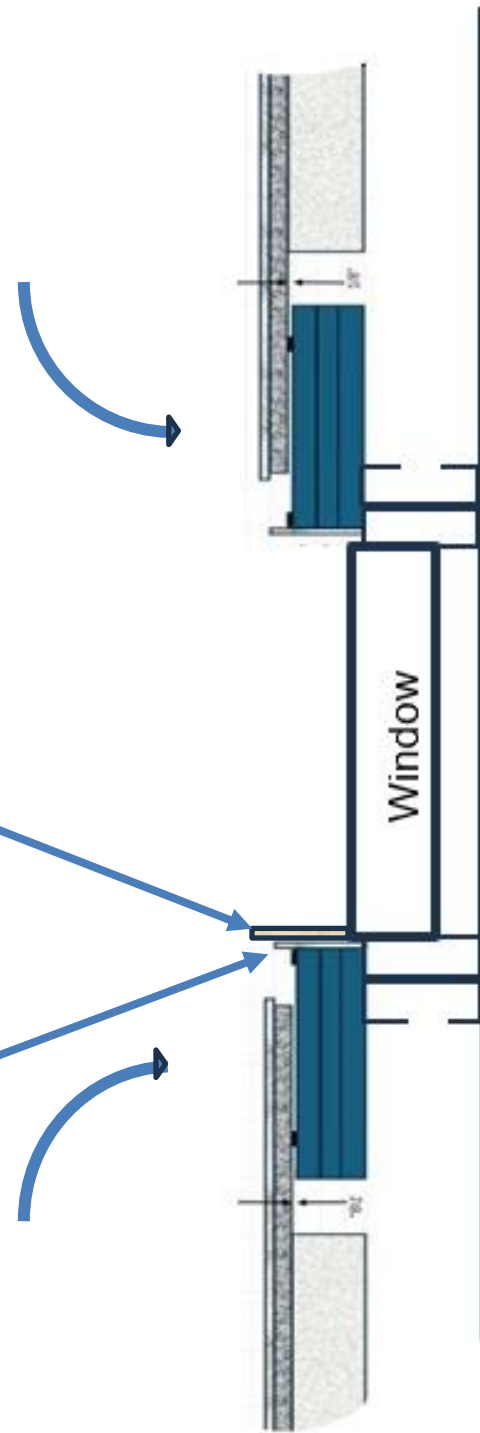
55504800

**Starter Strip:** 48" long section of the starter strip used at the bottom of the wall to receive the groove flange of first row of panels.

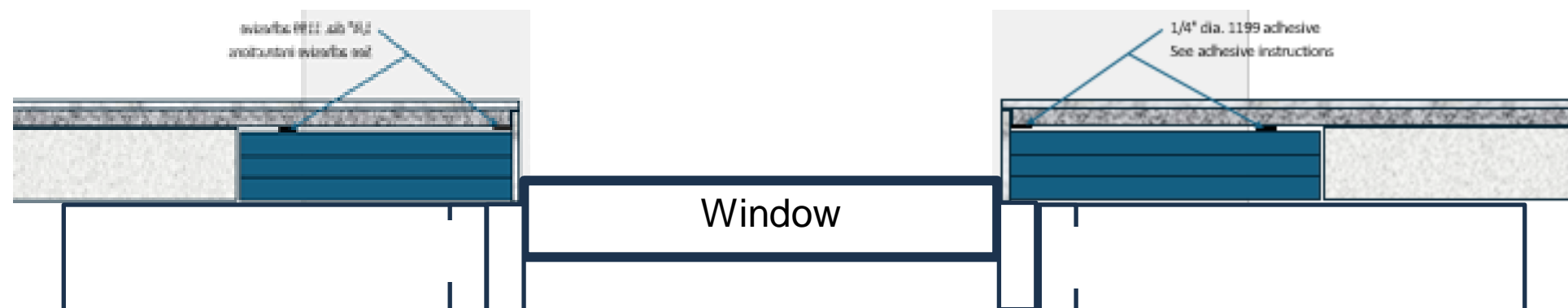
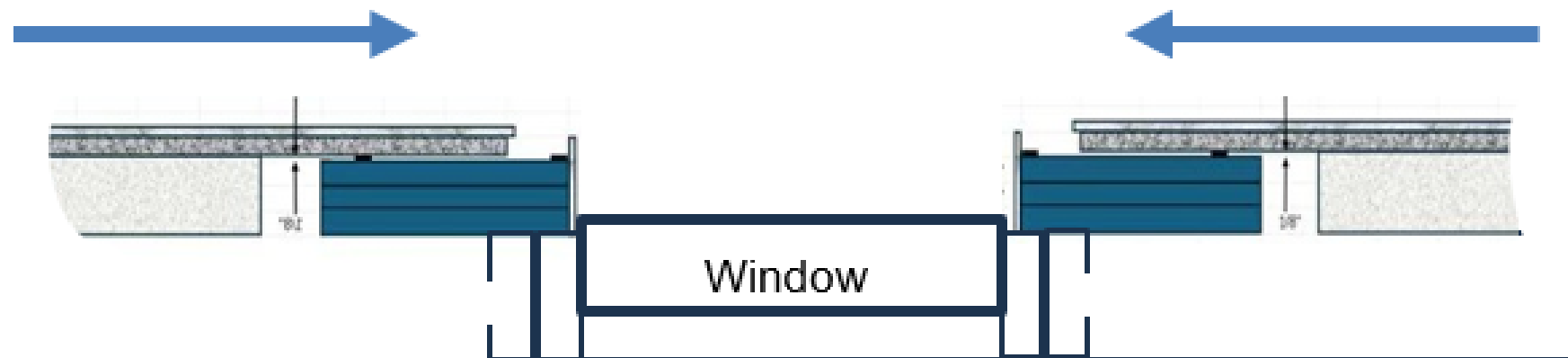
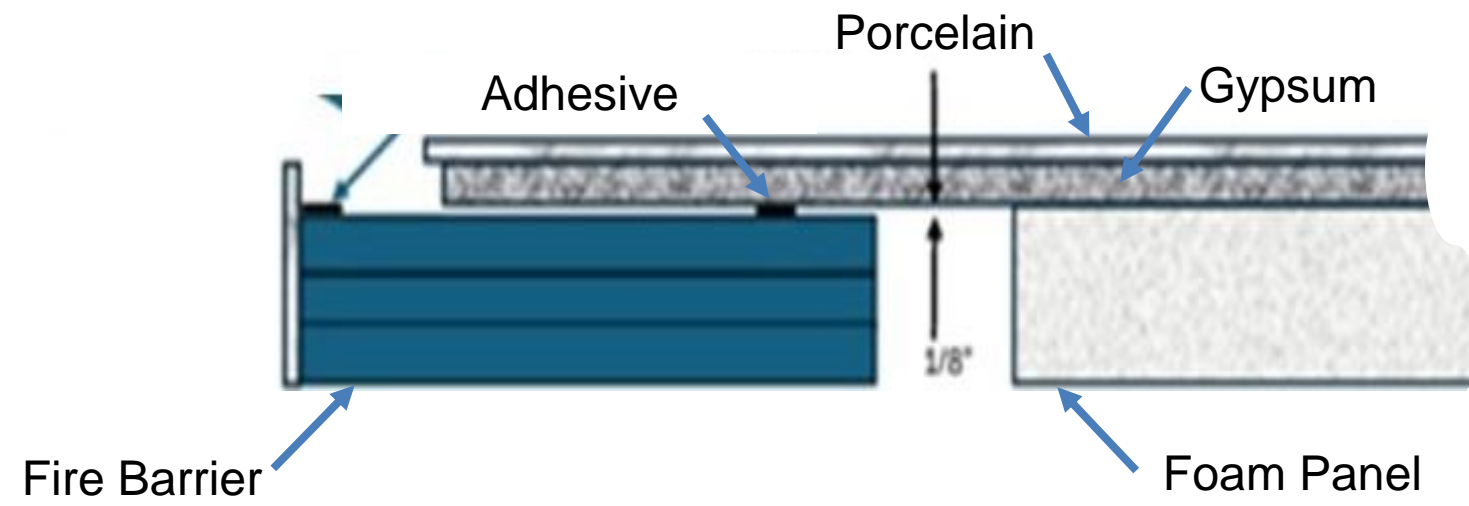
# Above and Below Windows, Doors & Protrusions

Extend bottom tile trim 1/2" beyond the vertical fascia and adhered to the flashing

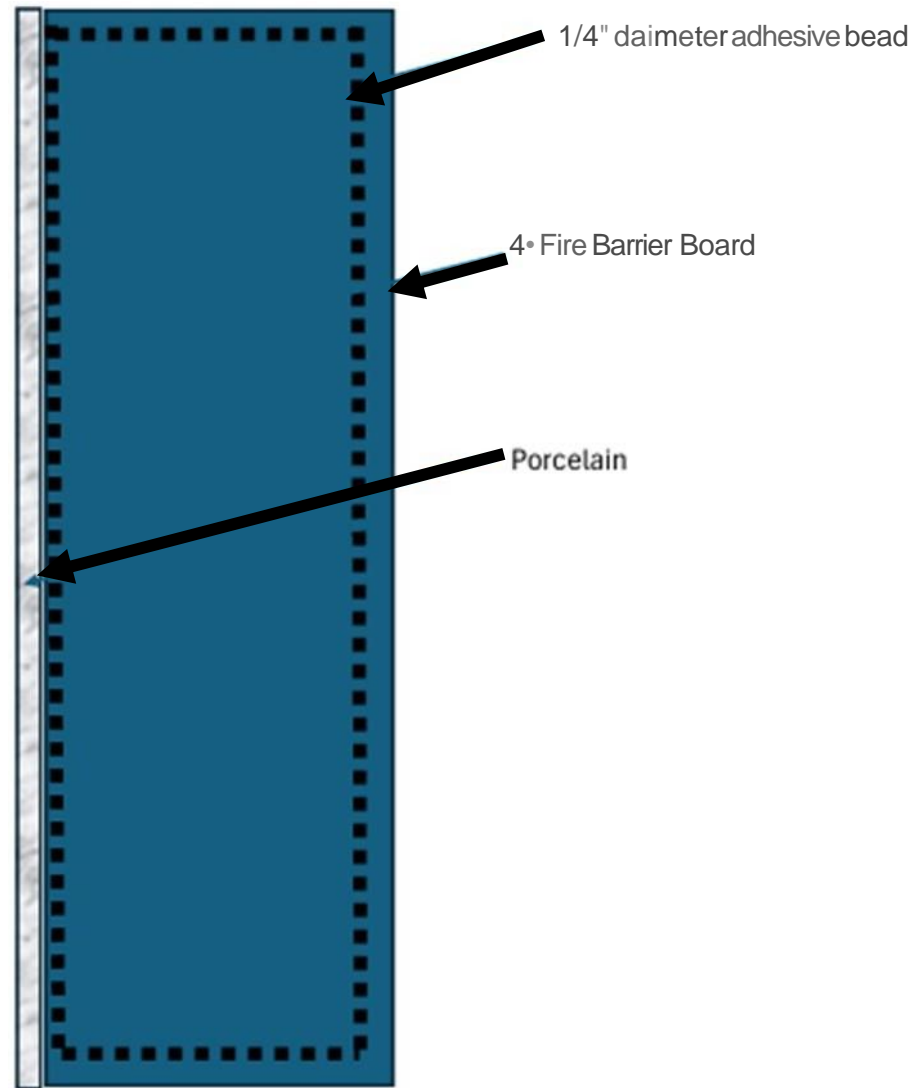
Flashing at bottom of window extended past the vertical fascia per specifications



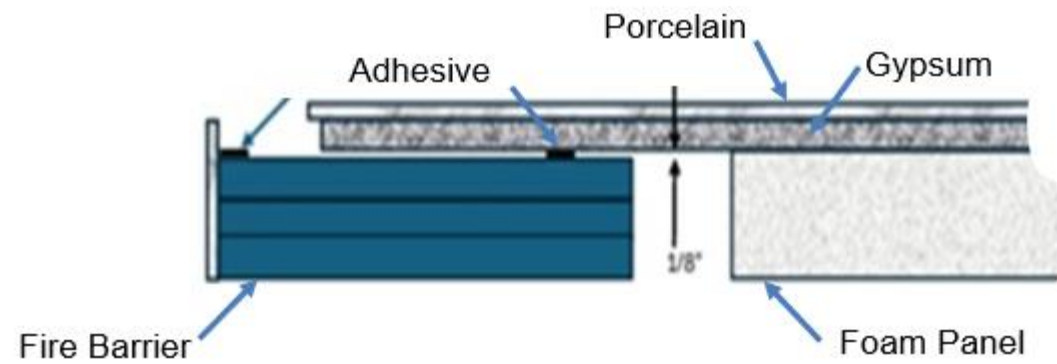
# Porcelain Installation around window of door



## Fire Barrier Adhesive Pattern

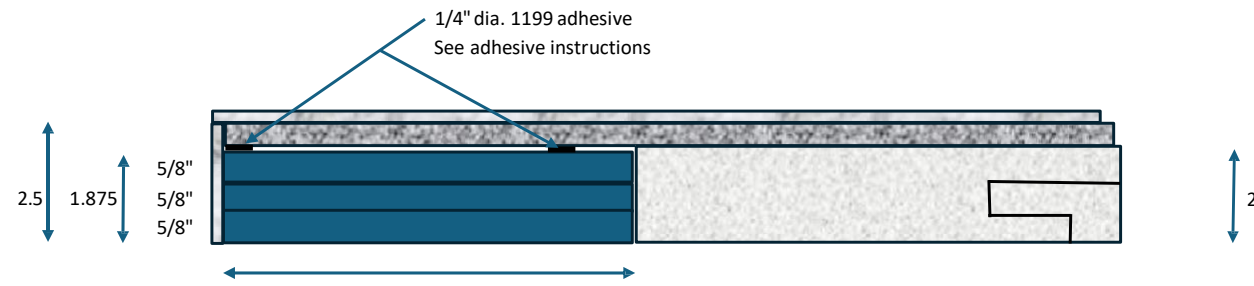


NFPA 285 Window Assemblies



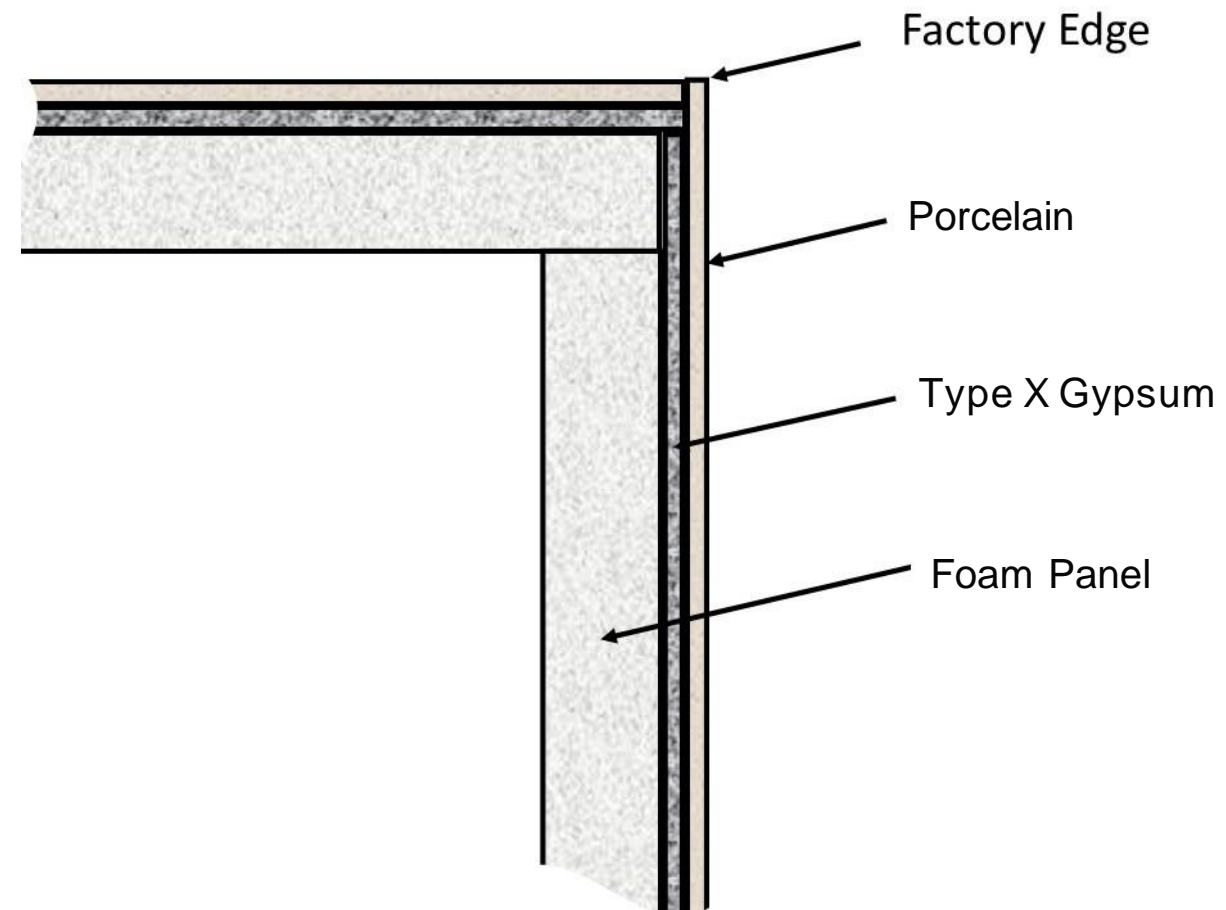


# NFPA 285 Window Assembled

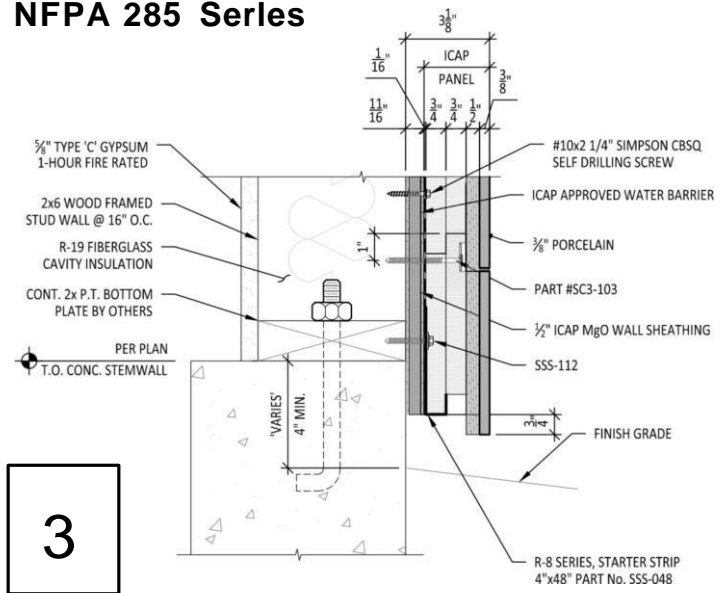


# Outside Butt Fit Corner Assembly

(Can be fabricated on-site or ordered pre-fabricated)

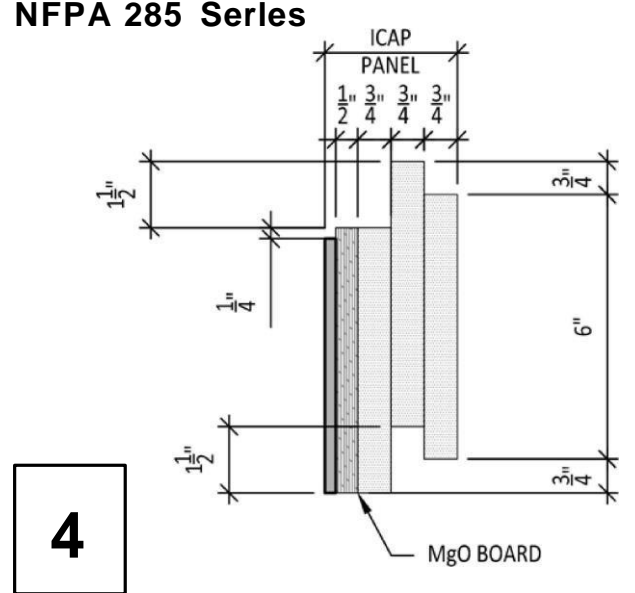


**Starter Section and R-8.59 Dimensions  
NFPA 285 Series**



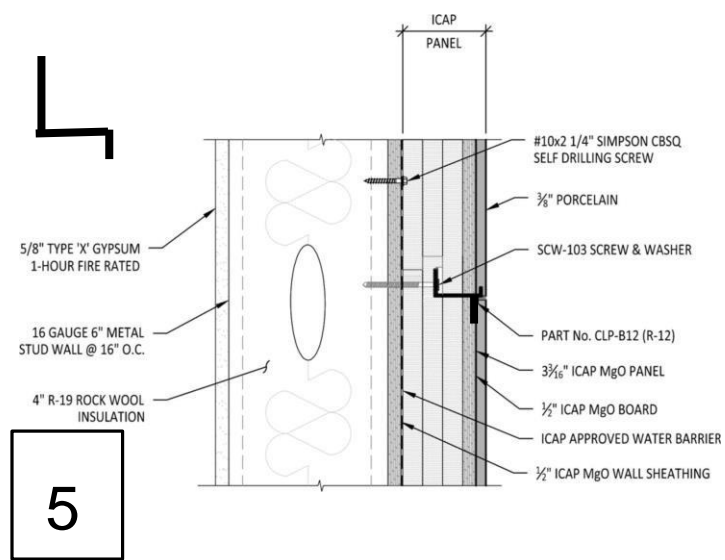
**3**

**R-12.25 Panel Dimensions  
NFPA 285 Series**



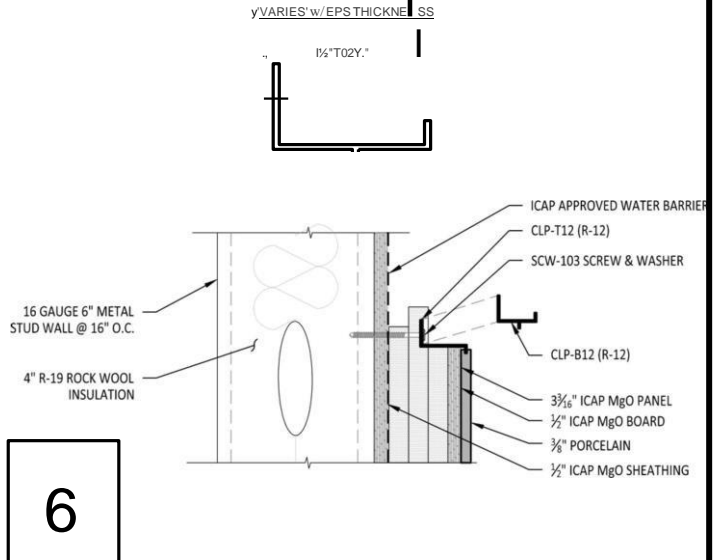
**4**

**R-12.25 / U-.0816 SERIES, TOP CLIP**



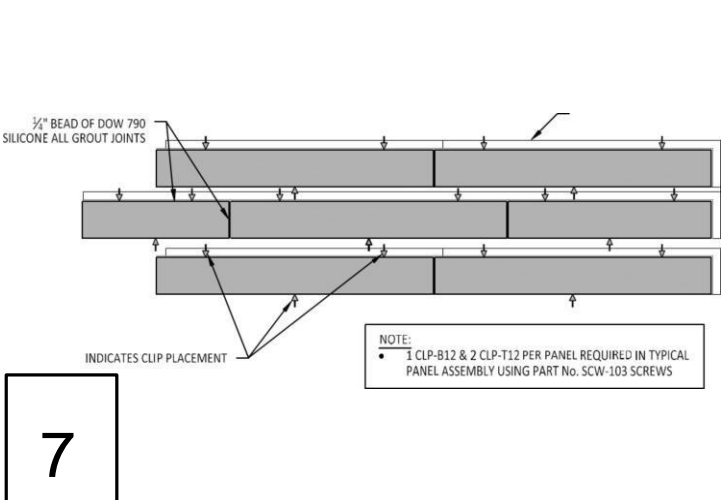
**5**

**R-12.25 / U-.0816 SERIES, BOTTOM CLIP**



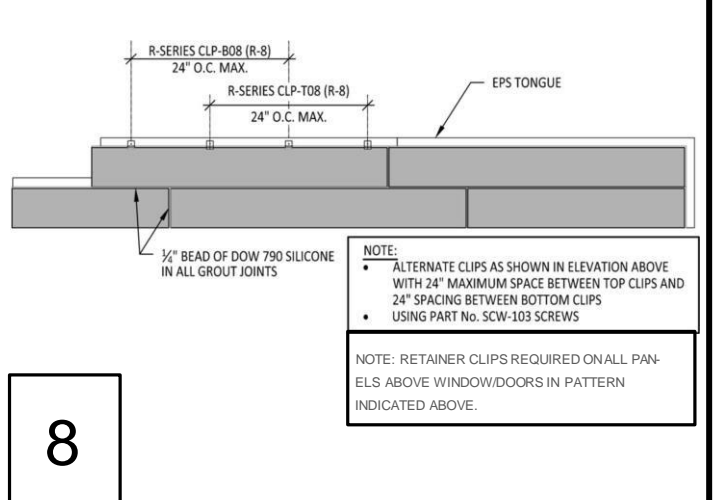
**6**

**Above Windows & Doors**



**7**

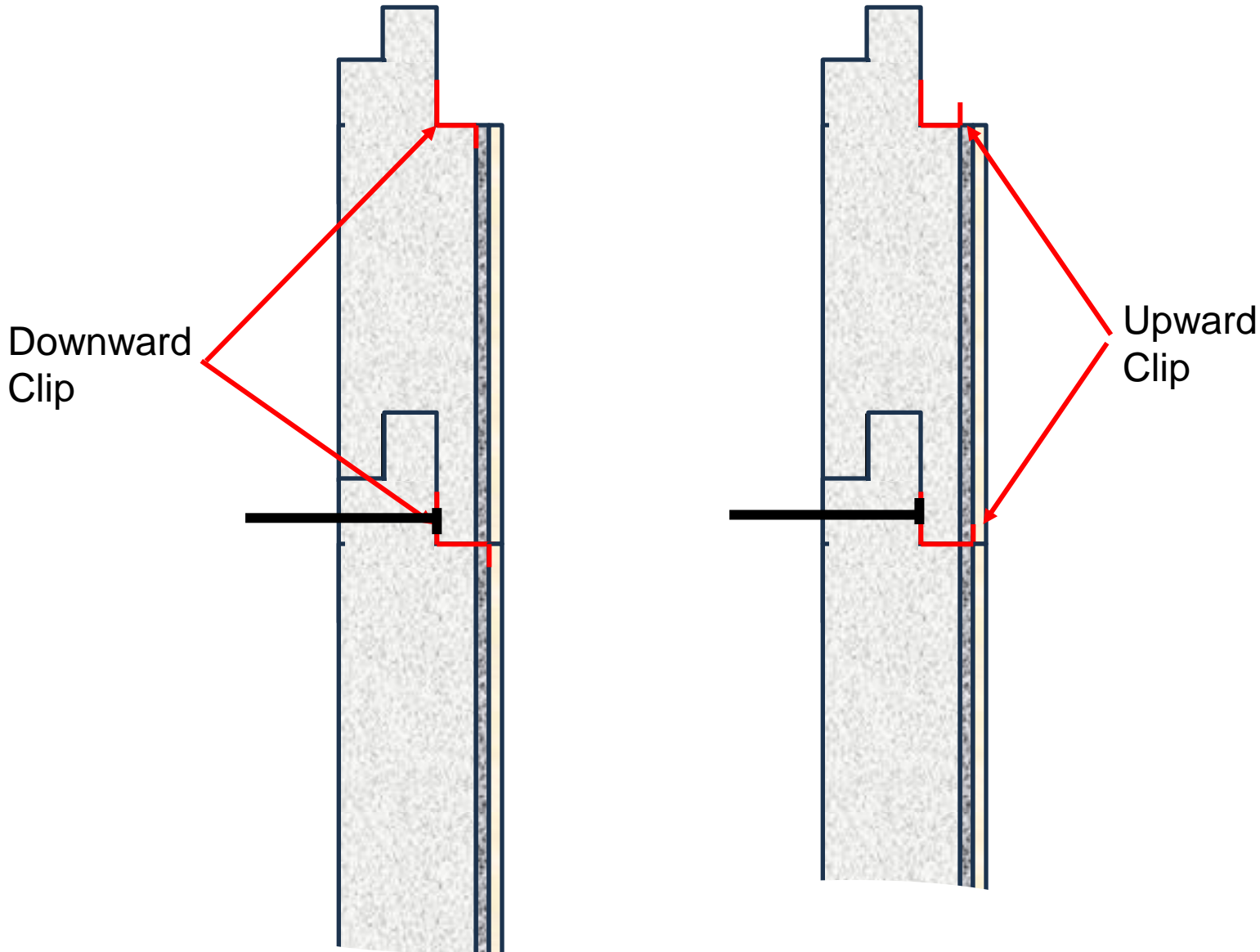
**Retainer Clip Locations  
Above Windows & Doors**



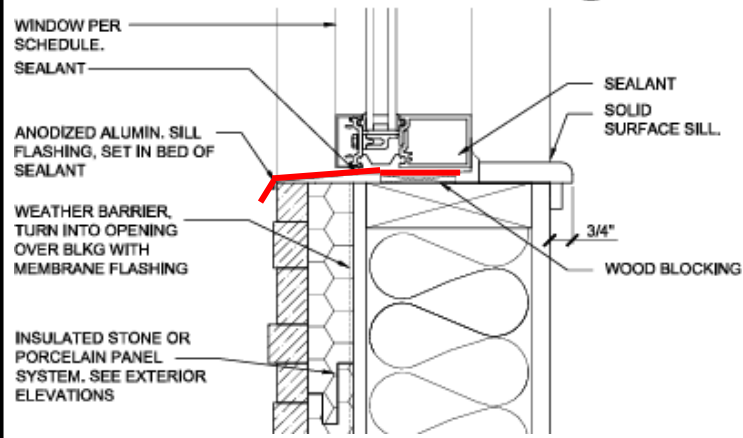
**8**

Metal Clips are required above windows, doors and protrusions  
8 ft. or too another window/door/protrusion

(For vertical panels clips install similarly as shown in drawings 7 & 8)  
(use a rubber or plastic mallet to drive clips between porcelain and gypsum)

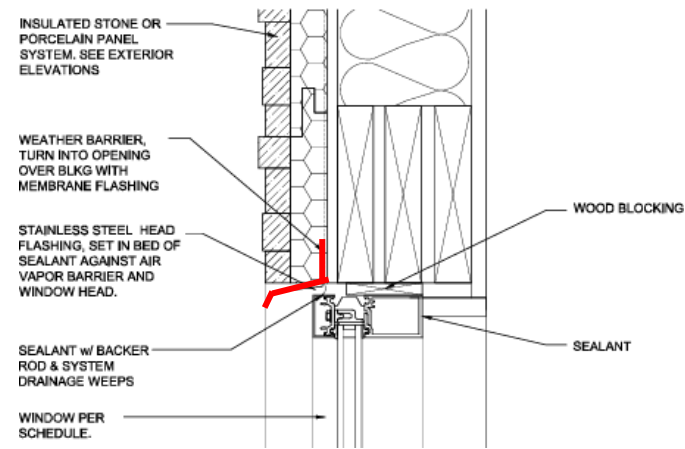


### Windowsill Flashing



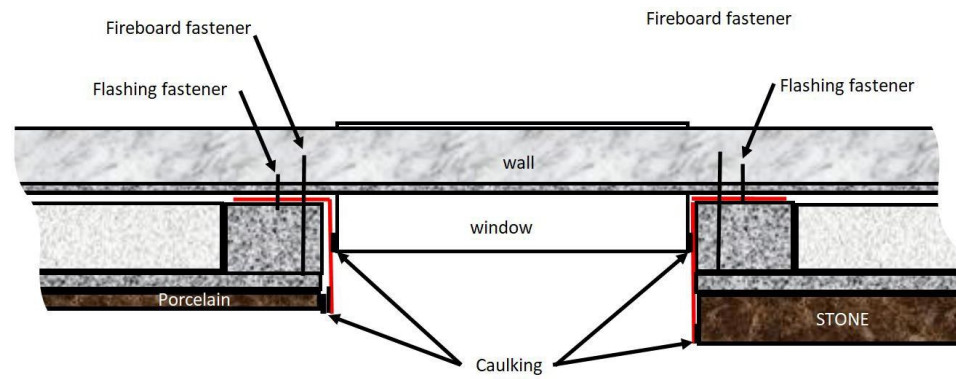
9

### Above Window Flashing



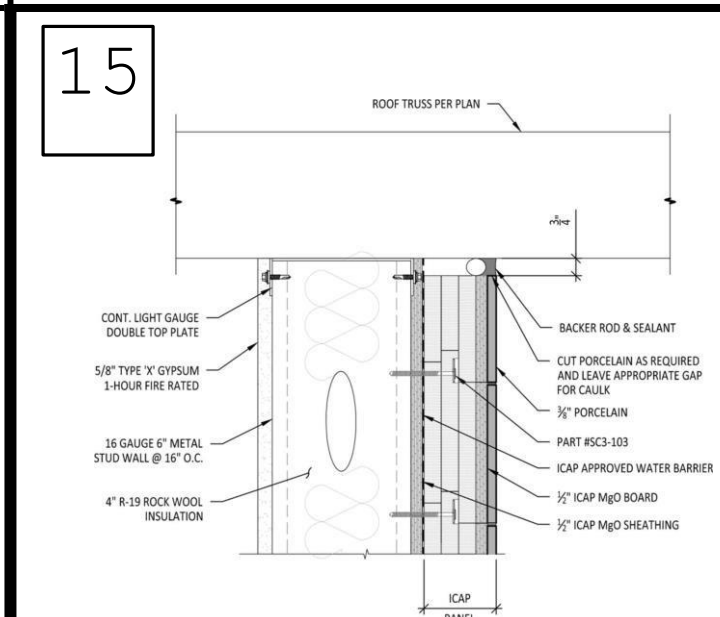
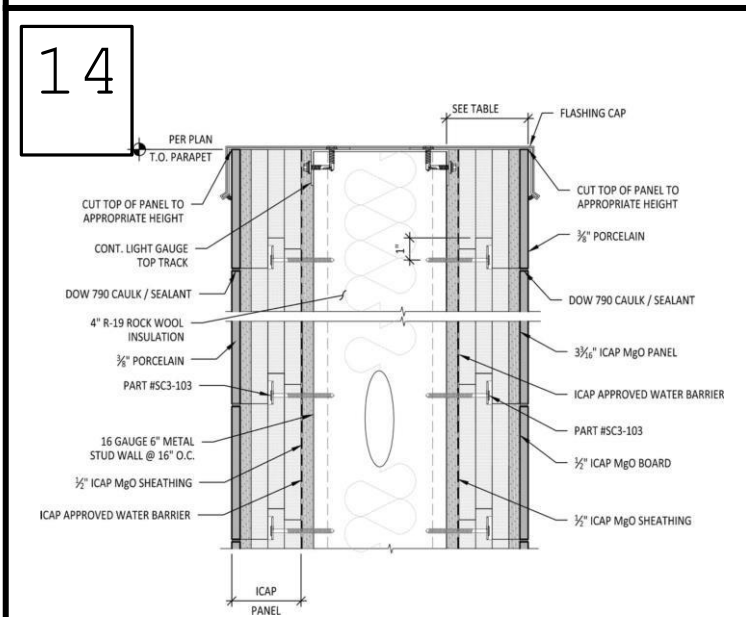
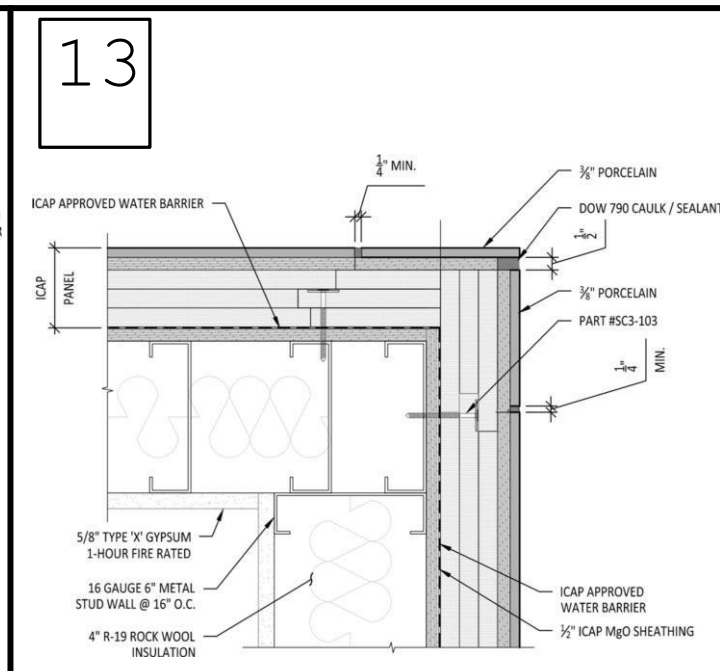
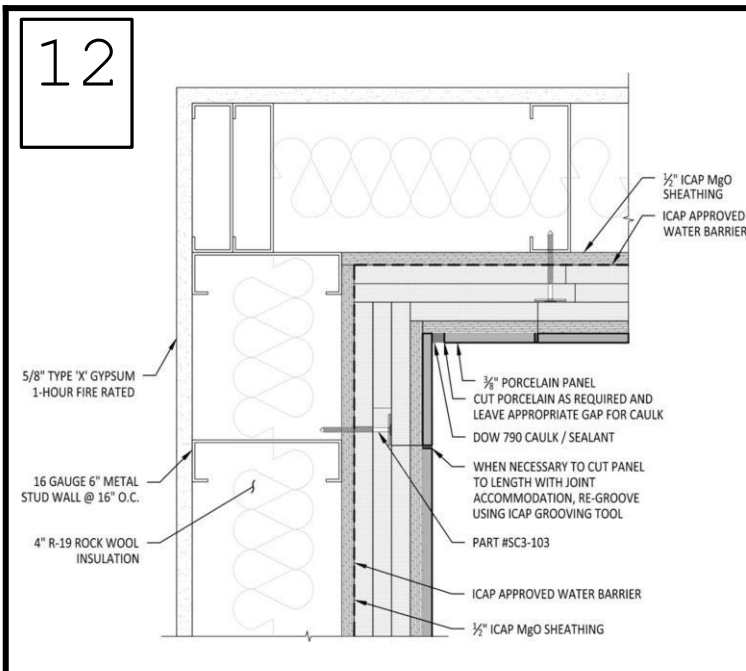
10

### Window Side Flashings



11



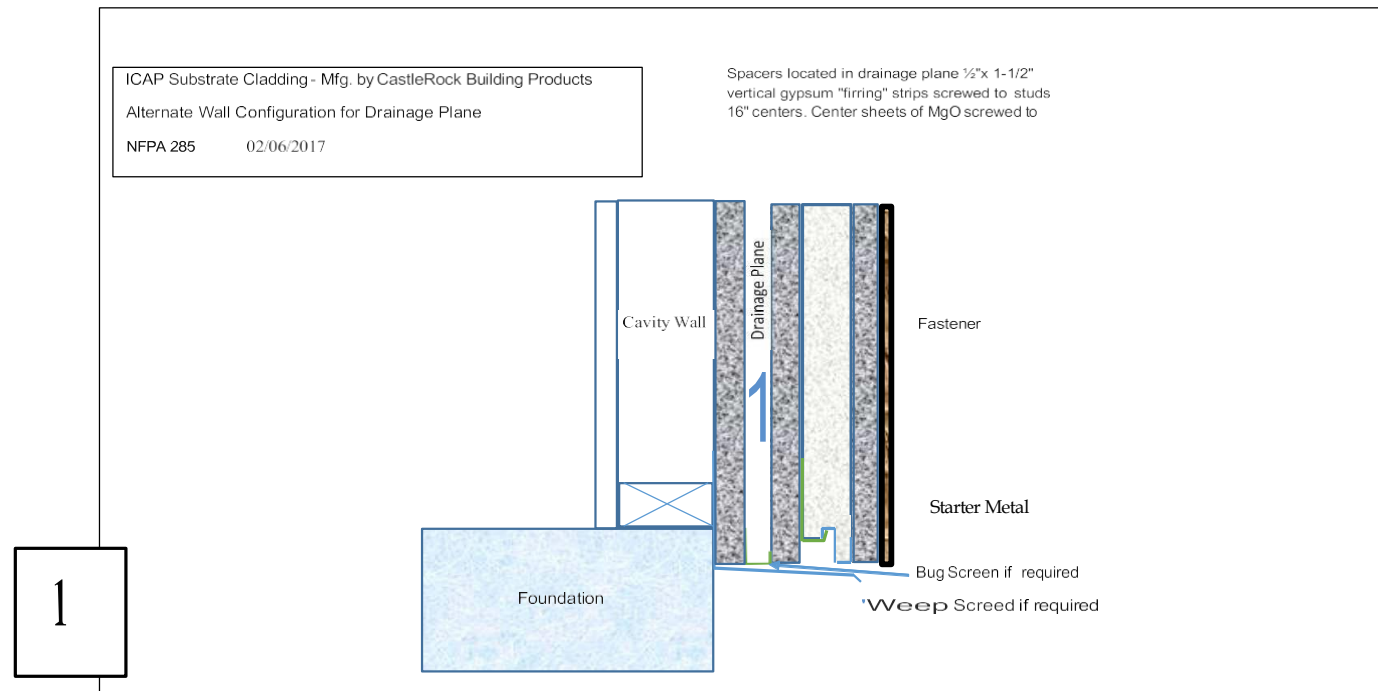


R-11.04 INSULATION TABLE

ICAP PANEL MATERIAL	TOTAL PANEL INCHES	MILLIMETERS	PANEL R-VALUE
EPS FOAM	2.00"	50.8	9.698
Type X Gypsum	.500"	12.7	R-1.0
BONDING ADHESIVE	.0625"	1.5875	
PORCELAIN	.375"	9.525	R-.34
TOTAL	2.9375	74.6125	R-11.04

NOTE:

# Optional Drainage Wall Configuration-Illustration "Drainage Option"



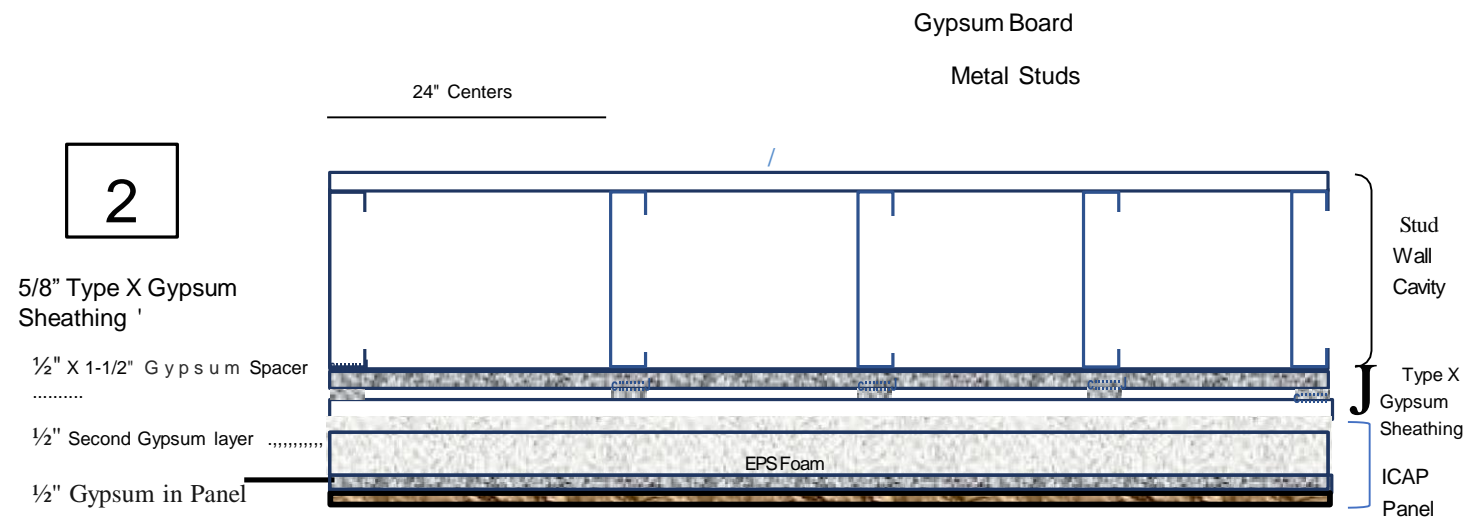
Air/Weather Barrier installs on MgO sheathing closest to the cavity wall.

## Optional Rain-screen Drainage Wall Construction

ICAP Substrate Cladding - Mfg. by CastleRock Building Products NFPA 285 02/06/2017

Alternate Wall configuration with Drainage Plane

Top View:



Various fascia:

- Porcelain
- Stone

# ICAP-USA

## Porcelain & Stone Maintenance Instructions

ICAP Porcelain Cladding can be installed in numerous design possibilities and a variety of looks. The Porcelain is easily cleaned due to the nature of the porcelain and its impervious surface. The grout joints are more vulnerable and should be treated carefully based on the type of grout :

### Routine Porcelain or Stone Tile Care

Regular, basic cleaning with warm water and mild soap is sufficient to keep porcelain cladding looking good. You can also use gentle, everyday multipurpose spray cleaner to remove hard water deposits and mildew. Do not use cleaning products that contain acids or ammonia (and other harsh chemicals) as these can damage grout and glazed surfaces of the tile. Cladding can be spray washed at normal residential water pressure levels or with low pressure washers. Do not hold nozzle closer than 24 inches from the tile or grout to avoid damage of force water between joints.

### Grout Care

100% Silicone Grout: This grouting method may be cleaned in the same manner as routine porcelain care described above. Be careful not to force water in the grout seams or damage the silicone.

Cementitious Grouts: This type of grout should not be cleaned until it is completely dried and cured, then the grout should be treated with a silicone sealer. Grout, the material used to fill the spaces between tiles, is porous, and sealing it at this time will simplify maintenance in the future (Epoxy grouts and 100% silicones grouts do not require a sealer). We recommend you apply a sealer at least twice a year for maximum stain protection over cementitious grouts.

### Heavy Duty Cleaning

Neglected or situations where extreme dirt, smog, mold, mildew or dust is common may require more intensive cleaning. Clean glazed wall tiles with a scouring powder or all-purpose cleaner applied to a non-metallic pad. Rinse and wipe dry. In extreme cases use a commercial tile cleaner, or apply a strong solution of an all-purpose, non oil-based cleaner or scouring powder paste. Let stand for five minutes, brush and scrub. Then rinse with clean water and wipe dry..

### Purchasing Maintenance Products

Ceramic tile and Natural Stone cleaning products and sealants may be purchased at your local home center or floor covering store. Consult the manufacturer of the cleaner or sealant for usage instructions and more detailed information about how its spe-

### DO NOT...

Use cleansers containing acid or bleach for routine maintenance.

Use wax cleaners, oil-based detergents or sealants to maintain your tile (sealants may be used on grout joints).

Use ammonia (it will discolor grout).

Use harsh cleaning aids like steel wool pads or scouring pads containing metal.

Use a cleaning agent that contains color

# ICAP™ Insulated Cladding Warranty

P.O. Box 1258 Meridian TD 83680 Phone: 208 895-8557 Fax: | 208 859-4200 web: [www.castlerockx.com.com](http://www.castlerockx.com.com)

**WHAT DOES THE LIMITED WARRANTY COVER?**

InsulStone, Inc., OBA ICAP-USA™ warrants to the original purchaser/consumer at the time the products are installed, to be free from defects in material and workmanship in the course of manufacture.

This warranty is limited to the terms and conditions, exclusions and limitations, requirements and legal rights stated in this Warranty. In the event of repair or replacement under the terms of this warranty, the original warranty shall be limited to replacement or repair of the defective product and will extend for the balance of the warranty period from the date of the original installation. The coverage offered by this Express Limited Materials Warranty to the original purchaser and may only be transferrable to subsequent purchasers with the prior written approval of InsulStone.

**WHO IS COVERED AND HOW LONG DOES THE COVERAGE LAST?**

Should a material defect occur within 5 years of the original purchase by the registered purchaser, the manufacturer will in its sole discretion, replace the defective product before it is installed, or, for the first 5 years, reimburse the party for losses up to no more than twice the manufacturers selling price of the defective portion of the Product. During year 6<sup>th</sup> through 15<sup>th</sup> year, the warranty coverage shall be reduced by 10% per year such that after the 15<sup>th</sup> year all warranty coverage shall cease, and the warranty coverage shall be terminated. The Manufacturer's replacement of the defective product or granting of a refund pursuant this Warranty shall be in its sole discretion and the sole exclusive remedy available to the covered party with respect to any defect. **MANUFACTURER WILL NOT REFUND OR PAY ANY COSTS IN CONNECTION WITH LABOR OR ACCESSORY MATERIALS.**

**WHAT DOESN'T THIS WARRANTY COVER?**

This warranty does not cover damage of any kind resulting from: Faulty or improper installation

- Any and all labor for repair or replacement of warranted parts.
- Shipping costs for replacement parts.
- Movement, waving, buckling, or other distortions.
- Damage from impact or contact with foreign objects, chemicals, etc. Damage from failure to properly maintain the Product.
- Installation of the Product in direct contact with dissimilar materials or use of incompatible caulking, adhesives, fumes, vapors or coatings.
- Changes in the surface color resulting from exposure to the elements (i.e. soiling, staining or discoloring resulting from local conditions which InsulStone, Inc. has no control over.
- Settlement or shrinkage of the property or structure.
- Fire or heat from barbeques, heaters, vents, etc.
- Lightning, hurricane, tornado, windstorm, earthquake, hail, snow or ice accumulation, or other acts of God.
- Surface deterioration from air pollution, or seacoast environment.
- Abuse, misuse, vandalism, or abrasion.
- Product that has been painted, coated, colored or altered.
- Chips and cracks that do not affect the performance of the Product are not covered under this warranty.
- Any other causes beyond InsulStone/ICAP-USA's reasonable control.
- Substitution or use of specialty parts not listed in ICAP-USA's standard parts and price list.

**OTHER LIMITATIONS:**

ICAP-USA cladding is designed for use as exterior cladding installed in accordance with its published installation instructions and should not be used as roofing, floors, on ceilings, or in locations that require watertight protection.

We reserve the right to discontinue or change any design, color or texture, of any of our products at any time and without notice or liability. If, for any reason, you make a warranty claim and the product type originally installed is no longer available, we may substitute another product determined by us to be of comparable quality and price.

There are no warranties expressed, implied or written that ICAP-USA accepts responsibility for other than this Warranty.

**4. ICAP-USA IS NOT RESPONSIBLE FOR ANY CONSEQUENTIAL OR INCIDENTAL DAMAGES ARISING OUT OF ANY BREACH OF THIS EXPRESSED WARRANTY, OR ANY OTHER ORAL, WRITTEN OR IMPLIED WARRANTY THAT MAY APPLY TO YOUR PURCHASE, AS IT RELATES TO OUR PRODUCTS.**

**5. THIS IS YOUR EXCLUSIVE WARRANTY AND IS IN LIEU OF ALL OTHER WARRANTIES, EXPRESSED OR IMPLIED, INCLUDING BUT NOT LIMITED TO IMPLIED WARRANTIES OF MERCHANTABILITY AND FITNESS.**

This warranty gives you specific legal rights. You may also have other rights which vary from state to state. **SOME STATES DO NOT ALLOW THE EXCLUSION OR LIMITATION OF INCIDENTAL OR CONSEQUENTIAL DAMAGES, SO THE ABOVE LIMITATION OR EXCLUSION MAY NOT APPLY TO YOU. FAILURE OF PART OF THIS WARRANTY TO COMPLY WITH LOCAL OR FEDERAL LAW DOES NOT VOID**

**DOCUMENT IN ITS ENTIRETY.** This warranty shall be interpreted under the laws of the State of Idaho.

**HOW DO I REGISTER THIS WARRANTY?**

One application per property location where ICAP-USA/InsulStone, Inc. cladding is installed must be completed and mailed to ICAP-USA/ InsulStone, Inc. P.O. Box 1258 Meridian, ID 83680 within 30 days after the original installation has been completed. The notice should include the following: (1) Name of owner (2) Address of property or location of the installation (3) Date of purchase (4) Proof of purchase

**HOW DO YOU SUBMIT A WARRANTY CLAIM?**

You must submit a claim in writing with us within the warranty period and within a reasonable period of time after the defect is discovered. To initiate the claim, please go to [www.castlerockx.com](http://www.castlerockx.com), or contact us by mail at: ICAP-USA/InsulStone, Inc., PO Box 1258, Meridian, ID 83680. Phone#: 208.895.8557

**ANY REPAIR OF THE PRODUCTS UNDERTAKEN WITHOUT PRIOR WRITTEN AUTHORIZATION FROM ICAP-USA/INSULSTONE, INC. PRIOR TO RECEIVING WRITTEN APPROVAL FROM INSULSTONE, INC. WILL VOID THIS WARRANTY.**

This Warranty is effective as of 04 01 2024 and replaces all prior warranties.

Owner \_\_\_\_\_  
 Installation Address: \_\_\_\_\_  
 Name of installing Contractor: \_\_\_\_\_ Date Installed: \_\_\_\_\_  
 Date of Completion: \_\_\_\_\_  
 Phone# \_\_\_\_\_ Owner Signature \_\_\_\_\_

Return a copy of this Limited Materials Warranty to ICAP-USA PO Box 1258 Meridian, ID 83680