

# CastleRock™

## ICAP C-Series

### E84 Series - R-10 to R-20 Installation Guide

#### Warning:

(Read these instructions thoroughly before attempting to install)

ICAP-USA™ Cladding – Patent #: USA #8,176,701B2, Canada 2,588,294

Test reports and certifications are listed below:

Intertek/Warnock Hersey Test Reports                      W/N 20269

Intertek test reports available at [www.spec-direct.com](http://www.spec-direct.com)

CastleRock website [www.castlerockx.com](http://www.castlerockx.com)

Installation Guides available at [www.castlerockx.com](http://www.castlerockx.com)

Or by contacting us at [info@castlerockx.com](mailto:info@castlerockx.com)

Testing conducted in accordance with the following:

Evaluation Guide:                      ICC EG 315

**ASTM E330(2002):** “Standard Test Method for Structural Performance for Exterior Windows, Doors, Skylights and Curtain Walls by Static Air Pressure Difference”

**ASTM E84(2009) -08a** “Standard Test Method for Surface Burning Characteristics of Building Materials”

**CAN/ULC S102 (2007)** “Standard Test Method for Surface Burning Characteristics of Building Materials”

**ASTM C578** “Standard Test Methods for EPS Foam”

**ANSI A137.1-2012** American National Standard Specifications for Ceramic Tile - Version 2013.1

**ASTM C373** Standard Test Methods for Determination of Water Absorption and Associated Properties by Vacuum Method for Pressed Ceramic Tiles and Glass Tiles and Boil Method for Extruded Ceramic Tiles and Non-tile Fired Ceramic Whiteware Products

#### Summary

ASTM E84, CAN/ULC S102 (2007)

Flame Spread Rating:                      0

Smoke Generation Rating:                      0

# ICAP Series

## Installation Guide

	<u>R-Value</u>	<u>Height Range</u>	<u>Length Range</u>
<b>Flat Panels</b>	10-20	5" - 22-1/2"	22-1/2" - 126"

**Note: Panels sizes are dictated by porcelain panel sizes. Check with ICAP for available sizes.**

<b><u>Tools Required</u></b>	
<b>Screw gun w/ adjustable torque chuck:</b>	
Torque Drives: T-21 & T-25 - Screws: See Table "A"	
<b>Diamond Porcelain blade, water cooled saws:</b> Bridge saw, circular saw, or track saw.	
<b>Oscillating Tool:</b> For cutting or removing foam, fireboard or cleaning adhesive from the back of porcelain tile	
<b>Saws (Diamond Blade):</b>	
4-1/2" water cooled circular saw (Dewald, Milwaukee, etc.)	
4- 1/2" Right Angle Grinder	
Wet/dry diamond blades for saws	
Oscillating Tool blades	
<b>Scaffolding/manlift (w/window pkg. May be required for large panels)</b>	
<b>Ladders</b>	
<b>Normal Carpentry and Construction Tools</b>	
<b>Safety Equipment</b>	

## Workmanship

This Installation Guide assumes the construction personnel have knowledge of the materials described and their proper methods of installation. The manufacturer recommends certified installers be used to install ICAP products. Installer certification is available through the ICAP-USA "Factory Certified Installer" program. Contact us at 208-895-8557 for details.

## Preparation

Prior to commencing activity related to the scope of this Guide, review all adjacent products and other subcontractor work that precedes the installation of ICAP-USA cladding ensure proper workmanship is reflected and that there are no recognizable errors or deficiencies.

## Building Code Requirements

Building code requirements vary from area to area. Check with local authorities for building code requirements for your area and application. Carefully read all sections of this guide and follow the manufacturer's Installation Instructions before proceeding with your ICAP application. In the event the local building codes conflict with other statements made in this document, contact the manufacturer for additional guidance.

## Material Requirements:

## Flashing

All flashing and flashing accessories must be corrosion resistant materials and integrated with the WRB materials or flashings recommended by the air/water resistant barrier manufacturer for use with their products. Flashing must be installed at all through the wall penetrations and at terminations of ICAP panel system, around doors, windows and other protrusions in accordance with local building codes.

## Weep Screed

Some jurisdictions require weep screeds or termite barriers. These must be made of corrosion resistant metal a minimum of .019 inches or 26 gage thickness; or plastic weep screed a minimum of 0.050" with a minimum vertical attachment flange of 3 1/2" wide.

## Walls and Wall Systems

ICAP-USA ICAP Substrate Panels are designed to attach to the following wall substrates with manufacturer approved fasteners. See table on the next page to determine the appropriate fastener for your application.

## Recommended Clearances:

- ICAP Substrate Panels individually attach to the wall or studs and do not require a brick ledge support like masonry products.
- Check with your local building official for requirements above grade and concrete/paving in your area. (slope away from the structure in accordance with local building requirements)
- ICAP-USA™ is a cladding product and all components used in its manufacture are waterproof. Consult with your local building official regarding requirements in your area.

## Cautions:

- Do not subject ICAP-USA™ Claddings to frequent water contact such as sprinklers or direct spray. Place downspouts or drainage pipes so the water is not frequently contact the cladding.
- Do not subject ICAP-USA™ to contact with de-icing materials, salt, asphalt roofing material or its drainage, or other harsh chemicals. Prolonged exposure may damage the fascia or panel.
- Do not expose the EPS foam portion of the panel to extended periods of sunlight. All surfaces for EPS must be covered with fascia, flashing, other materials to protect it from UV exposure.

**INSULATED PORCLEAIN PANELS**

Pre-Engineered Insulated Porcelain Panels (900 Series) with Continuous Insulation Tongue and Groove Interlock: Manufactured by: CastleRock Building Materials, Inc. DBA: ICAP/InsulStone

**A. Standard Flat Porcelain Panels:**

- 1. Style:
- 2. Color:

**3. Standard Panel Sizes PAN-900 Series**

Width: 63.00 Inches (1,600mm)	Height: 22.50 Inches (571.5mm)	Part# PA63-225
Width: 126.00 Inches (3,200 mm)	Height: 22.50 Inches (571.5mm)	Part# PA126-225
Width: 63.00 Inches (1600mm)	Height: 14.00" Inches (355.6mm)	Part# PA63-14
Width: 63.00 Inches (1600mm)	Height: 7.00" Inches (177.8mm)	Part# PA63-7

Note: Special sizes

available within specified maximum sizes.

**B. Specialty Panels**

- 1. Above & Below Window Panels Part# MAG-930
- 2. Window Side Panels
  - Left Hand Window Side Panel Part # SPL-931
  - Right Hand Window Side Panel Part # SPL-940
- 3. Custom Panel
  - A. Non-combustible panel(R-4.3) Part # CPW-990

**C. Porcelain Panels and Components**

- A. Left Side of Window/Door Fire Barrier Part # WSP-004
- B. Right Side of Window/Door Fire Barrier Part # WSP-004
- C. Above Window Fire Barrier Part # WDP-004
- D. Starter Strip Part # SSS-048

**REQUIRED SPECIALTY TOOLS**

Traditional carpentry and cladding tools, caulking, etc. and the following specialty tools available from ICAP:

- 1. Oscillating Multi-tool for removing foam
- 2. Cordless Screw gun or drill with adjustable torque settings
- 3. Wet/Dry Tile saw (Preferably a bridge saw) with diamond blade for cutting porcelain
- 4. Laser Level or String Lines to level courses

**ACCESSORY MATERIALS**

Flashing: Rigid, corrosion-resistant metal a minimum of .019 inches (0.5 mm) or 26 gage in thickness; or plastic weep screed a minimum of 0.050 inch (1.3 mm) with a minimum vertical attachment flange of 3-1/2 inches (89 mm) wide.

**Fasteners:**

- |  |                                 |
|--|---------------------------------|
| a. 1/4" SPAX Power Lag Screw Washer Assembly | ICAP Part's #:<br>Part #SCW-103 |
| b. Trufast (VF-2250) Screw for Panel Clips   | Part #CLS-103                   |
| d. Screw for Starter Strip                   | Part #SSS-112                   |
| e. Metal Clip for Above the Window           | Part # CLP-103                  |
| f. Metal Clip for Above the Window           | Part # CLP-104                  |

## INSULATED PORCLEAIN PANELS

Pre-Engineered Insulated Porcelain Panels (900 Series) with Continuous Insulation Tongue and Groove Interlock: Manufactured by: CastleRock Building Materials, Inc. DBA: ICAP/InsulStone

### A. Standard Flat Porcelain Panels:

1. Style:

2. Color:

#### 3. Standard Panel Sizes PAN-900 Series

Width: 63.00 Inches (1,600mm) Height: 22.50 Inches (571.5mm) Part# PA63-225

Width: 126.00 Inches (3,200 mm) Height: 22.50 Inches (571.5mm) Part# PA126-225

Width: 63.00 Inches (1600mm) Height: 14.00" Inches (355.6mm) Part# PA63-14

Width: 63.00 Inches (1600mm) Height: 7.00" Inches (177.8mm) Part# PA63-7

Note: Special sizes

available within specified maximum sizes.

### B. Specialty Panels

1. Above & Below Window Panels

Part# MAG-930

2. Window Side Panels

Left Hand Window Side Panel

Part # SPL-931

Right Hand Window Side Panel

Part # SPL-940

3. Custom Panel

A. Non-combustible panel(R-4.3)

Part # CPW-990

### C. Porcelain Panels and Components

A. Left Side of Window/Door Fire Barrier

Part # WSP-004

B. Right Side of Window/Door Fire Barrier

Part # WSP-004

C. Above Window Fire Barrier

Part # WDP-004

D. Starter Strip

Part # SSS-048

## REQUIRED SPECIALTY TOOLS

Traditional carpentry and cladding tools, caulking, etc. and the following specialty tools available from ICAP:

1. Oscillating Multi-tool for removing foam
2. Cordless Screw gun or drill with adjustable torque settings
3. Wet/Dry Tile saw (Preferably a bridge saw) with diamond blade for cutting porcelain
4. Laser Level or String Lines to level courses

## ACCESSORY MATERIALS

Flashing: Rigid, corrosion-resistant metal a minimum of .019 inches (0.5 mm) or 26 gage in thickness; or plastic weep screed a minimum of 0.050 inch (1.3 mm) with a minimum vertical attachment flange of 3-1/2 inches (89 mm) wide.

Fasteners:

a. 1/4" SPAX Power Lag Screw Washer Assembly

ICAP Part's #:

Part #SCW-103

b. Trufast (VF-2250) Screw for Panel Clips

Part #CLS-103

d. Screw for Starter Strip

Part #SSS-112

e. Metal Clip for Above the Window

Part # CLP-103

f. Metal Clip for Above the Window

Part # CLP-104

Protect installed products until completion of project. Touch-up, repair or replace damaged products before Substantial Completion.

END OF SECTION

## Chart for using Spax Brand Fasteners into 5/8" Sheathing Type X Gypsum

### Densglass Type X Gypsum

Spax® Brand		Panels up to 24"	
		<u>the narrow direction</u>	
			<u>Lbs./sq.ft.</u>
1/4" Power Lag	Fasteners Spacing C-C	4"	103.6
	Fasteners Spacing C-C	6"	73.7
VersaFast™	Fasteners Spacing C-C	4"	102
	Fasteners Spacing C-C	6"	77.7

### GlasRoc Type X Gypsum

Spax® Brand		up to 24" Narrow Direction	
			<u>Lbs./sq.ft.</u>
1/4" Power Lag	Fasteners Spacing C-C	6"	102
VersaFast™	Fasteners Spacing C-C	4"	103.6
	Fasteners Spacing C-C	6"	77.3

Note: All Lbs./sq.ft. rating include ASTM E330 safety margin calculation

#### Screw/Washer Specifications:

Substrate: 5/8-inch fire rated gypsum sheathing installed per the manufacturer's instructions.

ICAP Panel Fastener Spacing - See Uniform Load Rating Chart in manufacturers' installation guide.

ICAP Washer/Screw Assembly: Part# SCW-103 – with fasteners specified in the Uniform Load Rating Chart in the manufacturers' Installation Guide. Fender washer 1.25-inch dia.

All panels fastened to 5/8-inch fire X rated board (15.875 mm) sheathing in accordance with the Uniform Load Rating Chart above

For NFPA 285 metal clips to be installed over 5/8-inch (12.70 mm) fire rated Board, 12 inches (304 mm) on center alternating CLP-103 and CLP-104 in the area up to 96 inches above the window.

## Fasteners



SCW10300

### Standard ICAP Screw/Washer Assembly for wood studs:

#9 x 3" Zinc Plated or Stainless Steel—T-25 Torque Drive, Course Auger Thread, Type 17 Point. Used to attach EPS Foam Panels to Studs.



TEK10300

TEK screws with 6 point torque drive, flat head #10 by 2-1/2" for use with ICAP screw/washer assembly to attach to metal studs. To be used with Fender washers listed below.

Please Note: Item in picture may not reflect size and finish of actual part



SSS04800

**Starter Strip:** 48" long section of the starter strip used at the bottom of the wall to receive the groove flange of first row of panels.



SCW08200

Screw for Starter Metal attachment #10 x 1-1/2" min.  
Option: TEK Screws for metal studs #10 x 1-1/2" min

### T-STAR Washer Head HCR<sup>®</sup> POWERLAGS<sup>®</sup>

EXTERIOR



SPAX143HCR OR SPAX144HCR

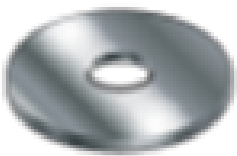
For attachment to TYPE X Gypsum (GlasRoc or Densglass))

Part # SPAX143HCR or SPAX144HCR screw/washer assembly for attaching ICAP panels to Type X Gypsum sheathing



Optional Fender Washer:

GRIP12500: Grip-Plate 1-1/4" washer for use with all screw/washer assemblies



Optional Fender Washer:

Fender Washer: Zinc plated or Stainless Steel, #10 x 1-1/4".

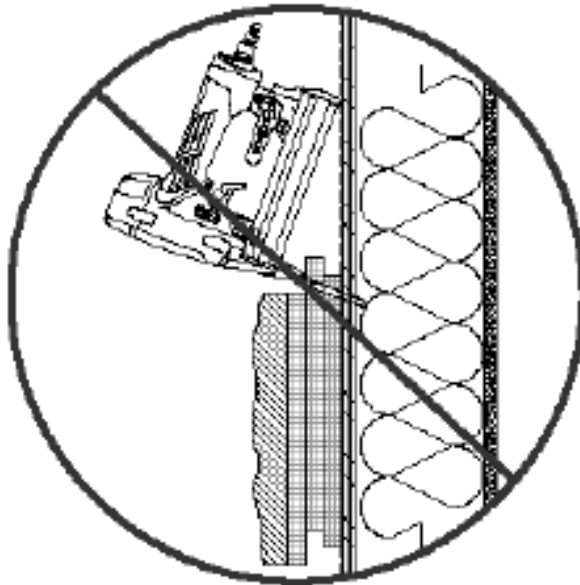
**Fastener Installation:**

Install all fasteners horizontal as illustrated below. Fasteners must be located in the foam area of the panel and not impede the ability of the groove of the next panel to interlock.

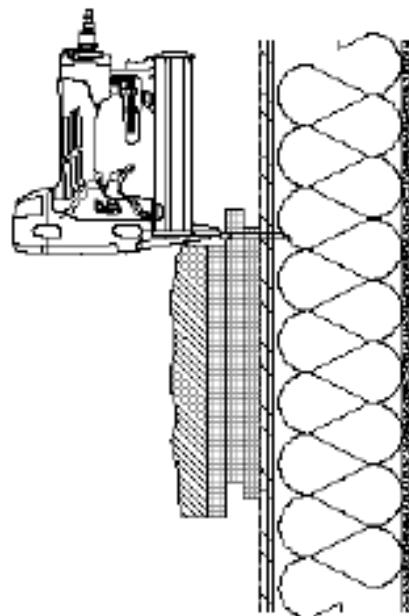
**NOTE:**

STAPLE LOCATION:  
SET AIR PRESSURE SO  
THAT STAPLE IS  
IMBEDDED  $\frac{1}{4}$ " INTO THE  
EPS.

STAPLE W/ 2  $\frac{1}{2}$ " LONG  
STAPLE.



**INCORRECT METHOD**



**CORRECT METHOD**

**01** ICAP CORRECT PANEL FASTENING PROCEDURE  
SCALE 1/2" = 1'-0"

NO. 01	WALL DETAIL	DATE	BY	DATE	BY	DATE	BY
PROJECT				STAR ELEMENTARY SCHOOL			
700 N. STAR RD.				STAR, IDAHO			
ARCHITECT				GENERAL CONTRACTOR			



## Fastener Chart For CastleRock/ICAP Panels

Type X Gypsum Sheathing, Wood or Metal Studs with OSB/Plywood Sheathing

### 5/8" Densglass Type X Gypsum

<u>Spax® Brand</u>	Densglass® Type X Gypsum	ICAP Panel Size	
		<u>up to 24" Narrow Direction</u>	<u>Lbs./sq.ft.</u>
1/4" Power Lag	Fasteners Spacing C-C	4"	103.6
	Fasteners Spacing C-C	6"	77.7
VersaFast™ VF-3250	Fasteners Spacing C-C	3"	92.2
	Fasteners Spacing C-C	4"	73.7

### 5/8" GlasRoc Type X Gypsum

Fastener	Sheathing	ICAP Panel Size	
<u>Spax® Brand screws</u>	GlasRoc® Type X Gypsum	<u>up to 24" Narrow Direction</u>	<u>Lbs./sq.ft.</u>
1/4" Power Lag	Fasteners Spacing C-C	4"	136
1/4" Power Lag	Fasteners Spacing C-C	6"	102
VersaFast™ VF-3250	Fasteners Spacing C-C	4"	103.6
	Fasteners Spacing C-C	6"	77.3

Note: All Lbs./sq.ft. rating include ASTM E330 safety margin calculation

### To Wood or Metal Studs with OSB/plywood Sheathing

Fastener to Stud			
<b>Metal Stud</b>	<b>Wood Stud &amp; Sheathing</b>	<b>Fastener to OSB/Plywood</b>	<u>Lbs./sq.ft.</u>
# 10x 1-1/4" TEK Screw	#10 x 1-1/4" Deck Screw	Studs & 4" O.C. to Sheathing	88

### Fastener to OSB/plywood Sheathing with Staples

OSB/Plywood Sheathing	Fasteners to Studs	Fastener Spacing	<u>Lbs./sq.ft.</u>
1" Crown x 2-1/2" Staples	Not Required	3" O.C.	126

All fasteners require min. 1-1/4" diameter corrosion resistant fender washers. Some areas near salt water may require stainless steel fasteners and washers or 1,000 hour corrosion resistant screws. Check with you local building official for code compliance in your area. (Note: ICAP fasteners are concealed in the foam and not exposed to exterior elements.

## EXECUTION

### EXAMINATION

Do not begin installation until the substrates have been properly prepared.

If substrate preparation is the responsibility of another installer, notify Architect of unsatisfactory preparation before proceeding.

Water resistive barrier shall conform to ICC-ES AC38 acceptance criteria.

### PREPARATION

Clean surfaces thoroughly prior to installation.

Protection: Prevent work from occurring on the opposite walls to which cladding is being applied.

### INSTALLATION

Installation as shown on drawings and as specified in accordance with manufacturer's installation instructions. Horizontal Panels are designed to be installed from left to right and vertical panels from right to left.

#### **Sheathing:**

OSB/plywood sheathing minimum of 7/16" thick or 5/8" Type X Gypsum attached to the studs as prescribed by the sheathing manufacturers installation instructions.

#### **Weather-Resistant Barrier:**

Installation of weather barrier and wall panels shall comply with local building code requirements or Authority Having Jurisdiction. Install weather barrier per manufacturer's installation instructions. Castlerock recommends liquid applied Air/Weather barriers such as Tremco Exoair 230 system, or STO Guard Gold Coat or equivalent. Use appropriate flashings as recommended as per the manufacturer's installation instructions.

#### **Flashing:** Install flashing as shown. Drawing #13

Flashing and flashing accessories shall be corrosion resistant materials and integrated with the air/weather barrier materials. Flashing shall be installed at all through-wall penetrations and at terminations of the panel system, around doors, windows and other protrusions in accordance with local building codes. Install flashing around penetrations and terminations of the veneer application. Install flashing to divert water run-off away from the finished surface area.

### D. PATTERNS AND LAYOUT

1. Determine the area to be covered with ICAP Porcelain Panels and lay out the pattern See Drawing #13 per panel size, corners, window/door trims, window/door perimeter panels and transition components if required. Refer to plans for locations of various panel sizes and types.

### E. ELECTRICAL BOXES

A. The standard CastleRock R-10 foam is 2" thick, but several other thicknesses are available for higher insulation values. For easy installation install a 2" deep electrical box on the surface of the sheathing (not recessed into the wall) and route the electrical wiring into the backside of the box.

B. Locate in the CastleRock Panel the correct location for the panel to fit over the box. Use a 4" right angle grinder with a diamond blade to cut the hole in the porcelain and remove the necessary foam from the hole so it will easily fit over the box. Seal the electrical box to the porcelain watertight to prevent water intrusion with a silicone sealant. Apply the appropriate cover plate over the box.

C. Other wall penetrations: Other wall penetrations can be addressed in a similar manner.

## F. INSTALLING CLADDING PANELS

1. **STARTER SECTIONS:** Determine the location of the bottom panels and install the J-hook shaped “starter section” Part # SSS-048 at bottom of the wall and lap it a minimum of 1” (25.4 mm) over the foundation. Attach every 6” (152.4mm) to the plate or studs with appropriate fasteners. Note: ICAP panels will hang ¾” below the bottom of the j-hook starter. Check local building codes for code requirements above grade and sidewalks, etc. In the absence of local codes, locate the panels 2 inches (50.8 mm) above sidewalks, pavement etc. and 4 inches (101.6 mm) Above grade.
2. Begin by installing from the corner of the building aligning the first panel to fit to the panels from the adjacent walls with the tongue upward. Horizontal panels install from left to right. Vertical Panels from right to left.
3. Upon reaching the bottom of an opening, cut the panels to fit to the protrusion, window or door.
4. **Do not notch** porcelain panels to fit around the window, door or protrusion. Crosscut the porcelain panel where it meets the window/door, etc. See drawing #13

## G. PANELS ABOVE THE WINDOW

Cut panels above the window/opening/protrusion to fit as below and above protrusion. Keep seems aligned as shown. See Drawing 13

## J. CORNERS

### Outside Corners

Butt Corner: Cut and fit the panels for the porcelain to fit as desired by removing the necessary EPS foam. Foam can be cut at 45-degree angle to fit the corner. See drawing #

Inside Corners: Cut the panels at an inside corner to fit the panels from the adjacent wall. Grout may be used to hide any irregularities.

## K. SOFFITS

### 1. Soffit :

Install panels until the last row will not fit under the soffit. Measure the distance between the top of the panel and the soffit. Cut the panel ¾” (19.05) shorter than the desired space. Install the panel by inserting it into the space between the uppermost panel and the soffit. The panel will slide down over the tongue of the panel below, leaving a space between the top of the cut panel and the soffit.

2. Screw the panel to wall through the tongue section on the side of the panels. Install backer rod and sealant into the space between the top panel and soffit. See detail #12

## L. PARAPETS

1. Install panels up to the height of the parapet. The top row of cladding will need to be cut to the correct height to match the height of the parapet. Secure panels by screwing through the tongue flange where possible and then “toe nail” screw the top of the panel to the parapet with appropriate screws. When the metal cap is installed, it will secure the top panels in place. See detail 11.

2. Install the metal cap over the top and sides of the panels as required.

## Panel Joints

- A. **Grout-less Joint: Joint thickness: (.02 inch)** Installers should use a typical business card to space between panels to achieve the minimum grout-less spacing.
- B. **Grouted joints can be ordered with the panel design up to 3/8" wide.**

### **Around Windows & Doors**

The most common question is "How do you install around doors and windows? There are typically 3 methods depending on the desired finished look and cost of labor.

- a. **Option "A": Colored Metal Flashings** (usually match the window frames):
  - i. L-shaped metal with a hemmed front edge. This provides color on both sides of the metal and a smooth, rounded edge. (See Installation Guide for details).
- b. **Option "B":**
  - i. J-shaped metal trim (See Installation Guide for details)
- c. **Option "C": Porcelain Returns** (This method is more expensive both for materials and labor)
  - i. Butt-fit corner: The fascia remains proud (visible) over the return porcelain to the wall/window. Return porcelain is custom cut to the same thickness of the EPS panel. The "return" to the wall porcelain fills the void from the backside of the porcelain fascia to the wall and covers the panel foam and butts tight to the backside of the fascia porcelain. Grout joints can be designed in and used also. The "returns" are secured with CastleRock recommended adhesives Dow 790, 795, or 1199.

### **Corners:**

- a. **Option "A": Colored Metal Flashings** (usually match the window frames) or porcelain color. The tile is sealed (Dow 790,795 or 1199 recommended) before the metal trim is installed. A 1/8" x 1" 2-sided foam tape is used to hold the metal corner in place. The 1/8" void created by the tape is filled with sealant to adhere the metal trim to the porcelain and create a watertight seal.
- b. **Option "B": Butt-fit corners.** The foam is cut at 45-degree angles to fit a 90-degree corner. The foam on one side (proud side) foam is cut back the thickness of the porcelain tile so the edge of the butt is not seen from the proud view. An oscillating tool is usually used to remove foam where needed.

See Illustration on next page:

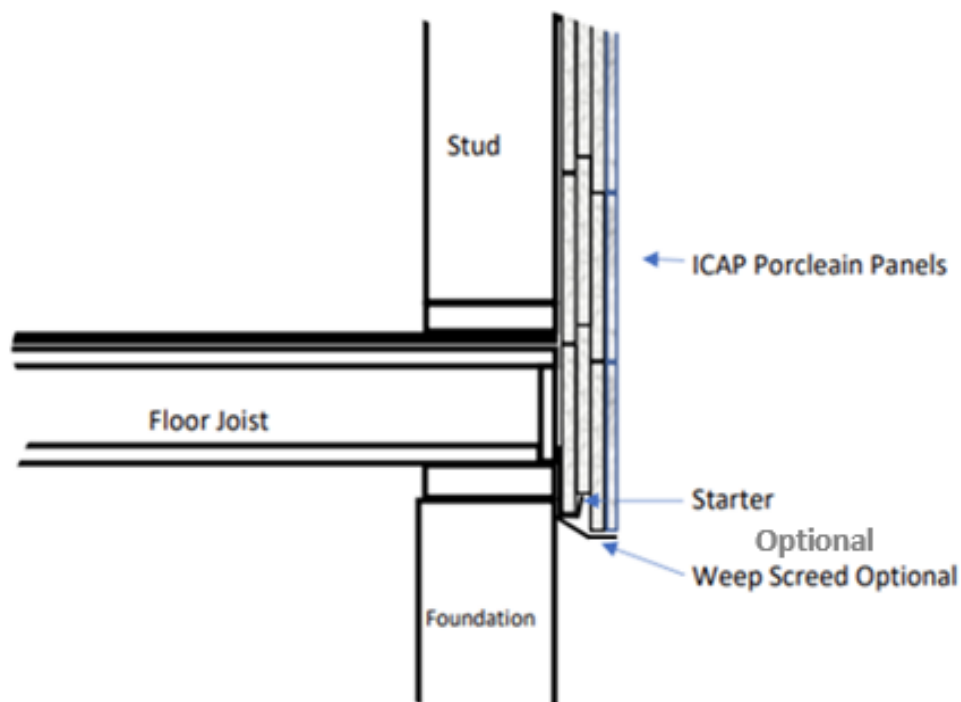
CastleRock Panels are a very simple 1-piece panel that interlocks similar to Lego's and staples or screws to the wall. Installation is fast and easy and can be done by tile installers, siding installers, carpenters, or most anyone with some mechanical abilities.

**1. Starter Metal:**

- a. A formed metal J-hook is required at the bottom of each panel. 48" sections are available from CastleRock Part# SSS-048. They are commonly galvanized steel but can be aluminum. Specifications are in the Installation Guide.

Drawing #1

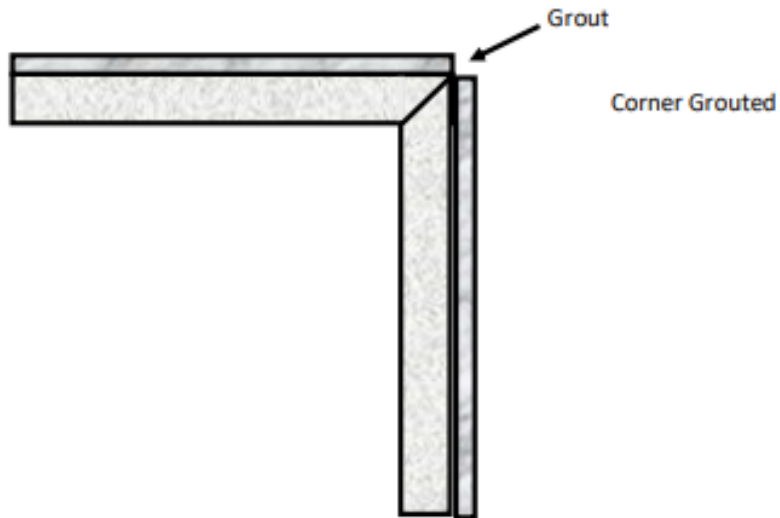
**Starter metal at base of wall**



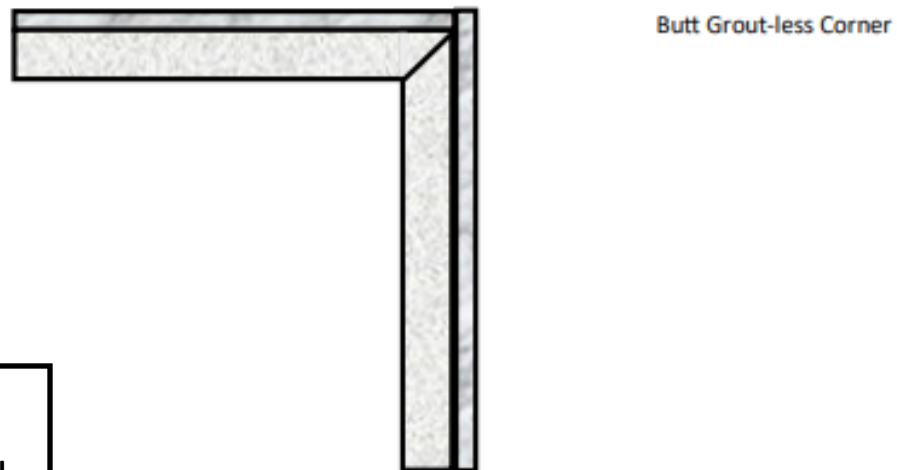
Corners  
Drawing #2

# CastleRock Porcelain Outside Corner Options

1.

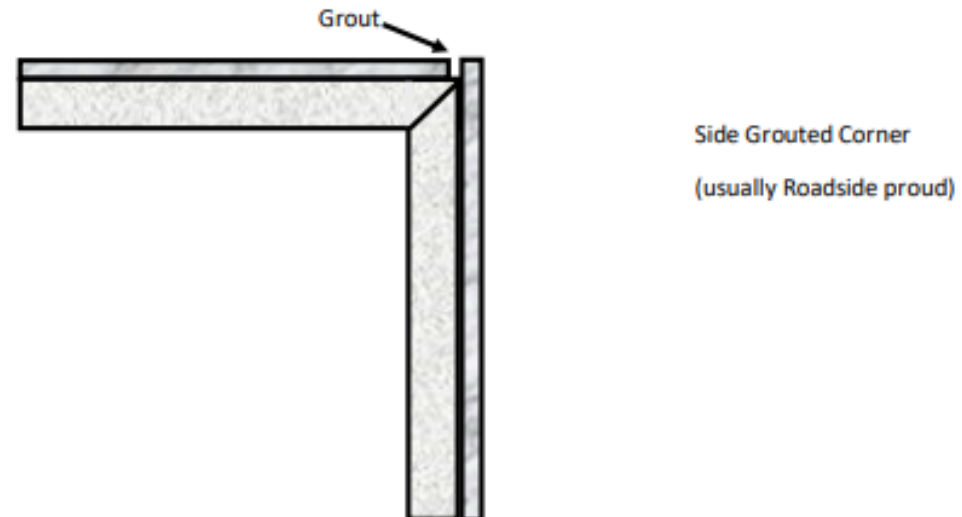


2.



Most Common  
Corner Method

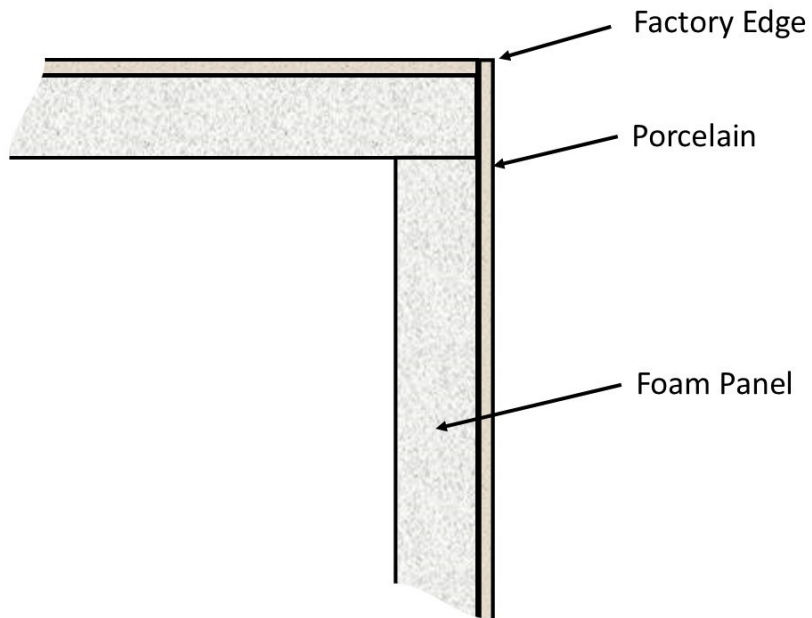
3.



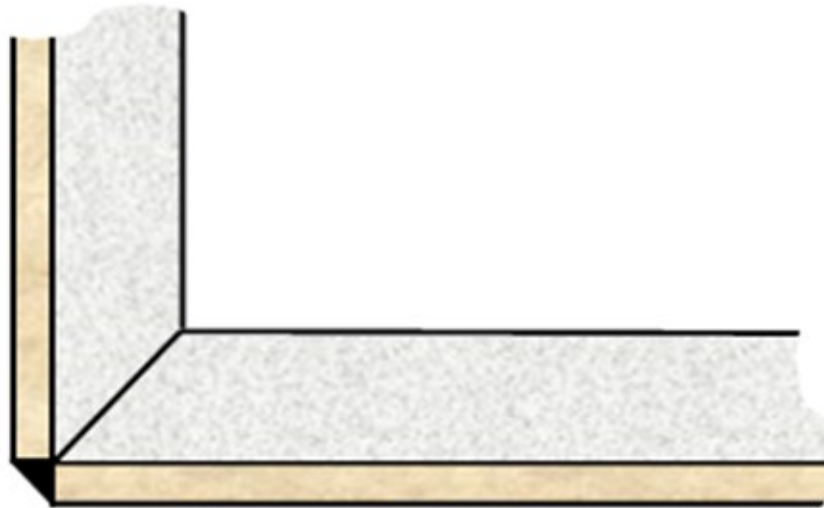
3

## Outside Butt Fit Corner Assembly

(Can be fabricated on-site or ordered pre-fabricated)

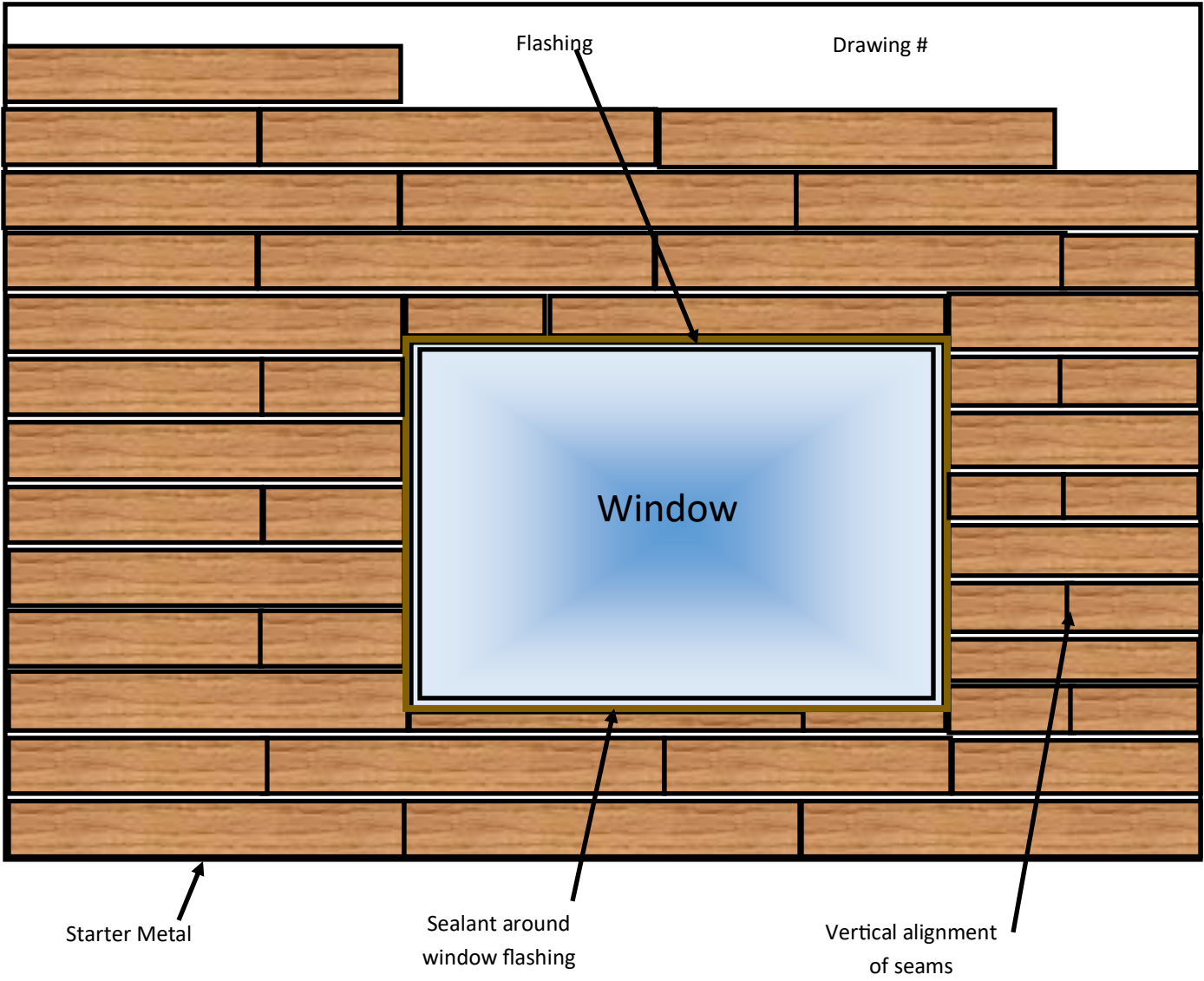


## Grouted or Caulked Porcelain Corner



4

# Horizontal Panel Installation





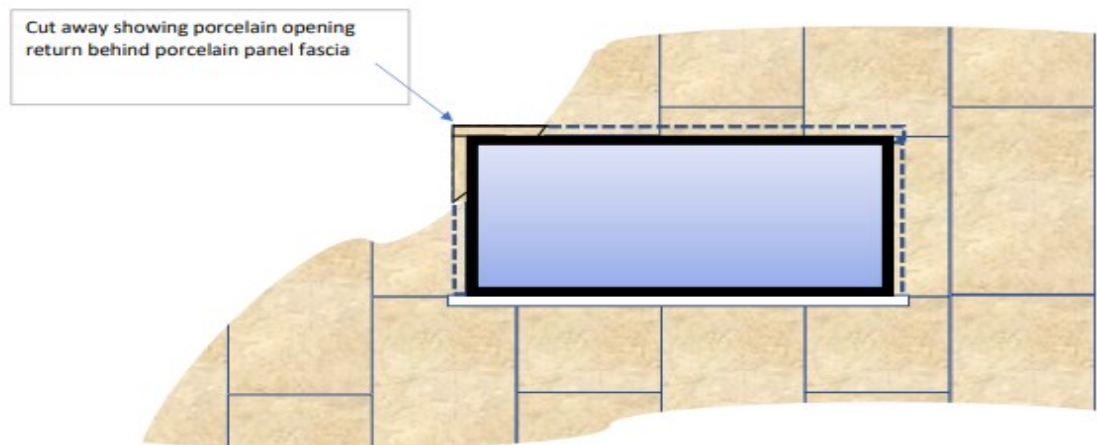
# Porcelain Window/Door/Opening Returns

## Step # 1



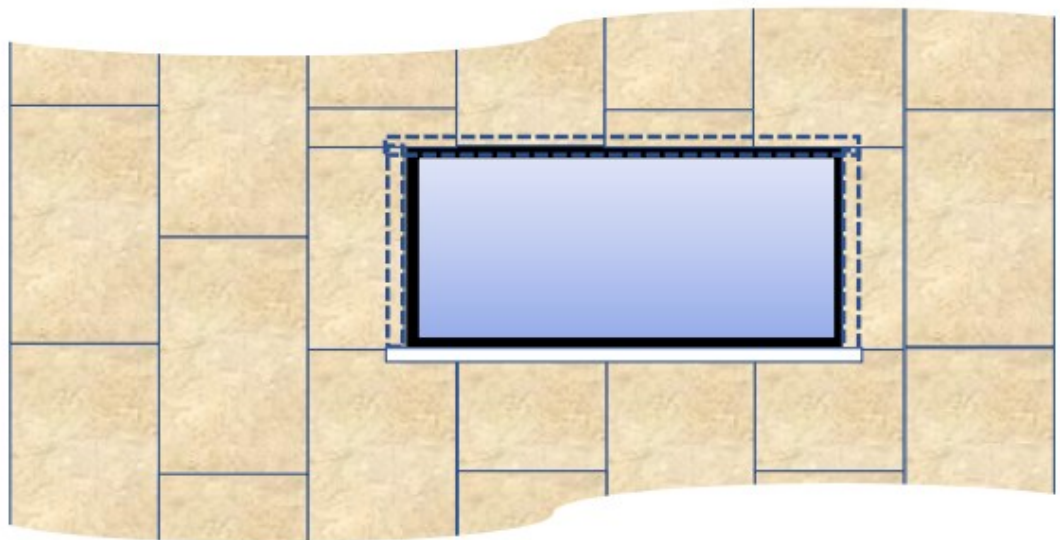
- A. After cutting the porcelain fascia panels to fit the window opening and allowing for caulking details:
- B. Remove a section of foam 3/8" wide from behind the porcelain fascia as shown in the above detail on the top and sides of the opening.
- C. Note: Using an "oscillating cutting tool" to remove the foam is recommended

## Step # 2



Install porcelain panels first cut to fit the opening as shown. Allow space for the "Sill" and caulking details between the window and porcelain return. The "cut-away" view shows the location of the porcelain return back to the wall.

## Step # 3

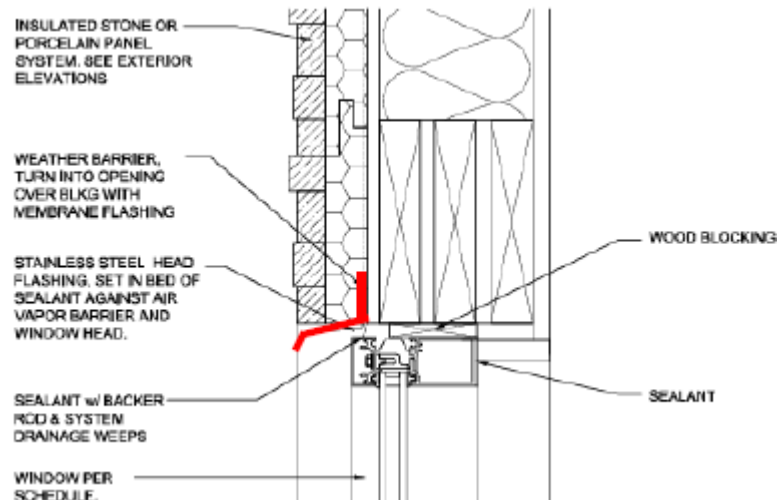
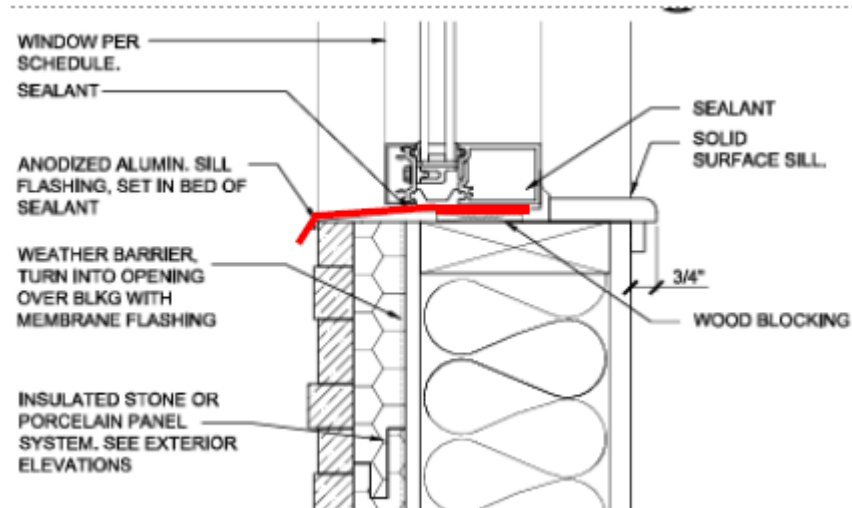


5

Install Porcelain Panels cut to fit the opening as shown. Allow space below the opening for the "Sill". Install the porcelain opening returns as shown in illustration #3 using Dow 1199 or 790 silicone adhesive.

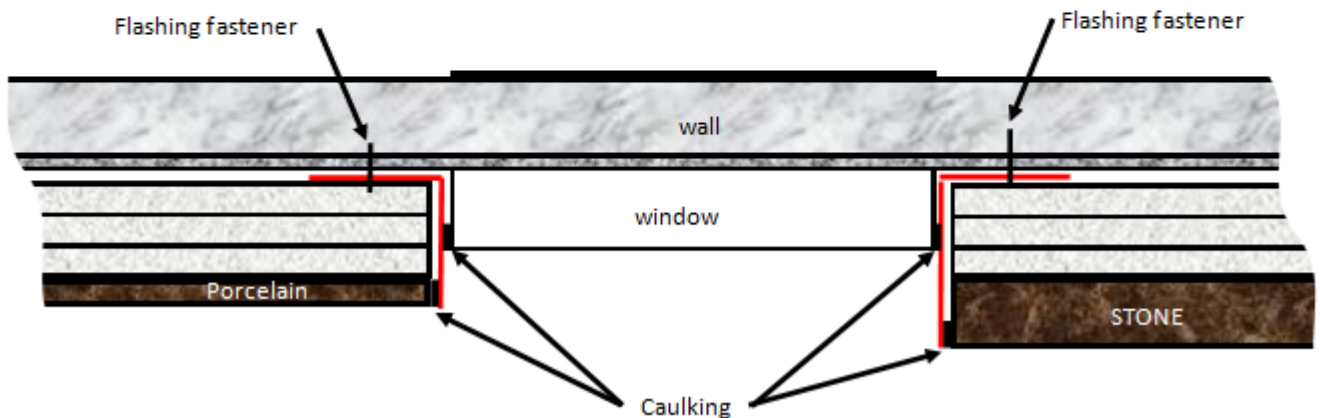
# Typical Porcelain Returns on Recessed Window

6



## Side Window/Door Flashings

7



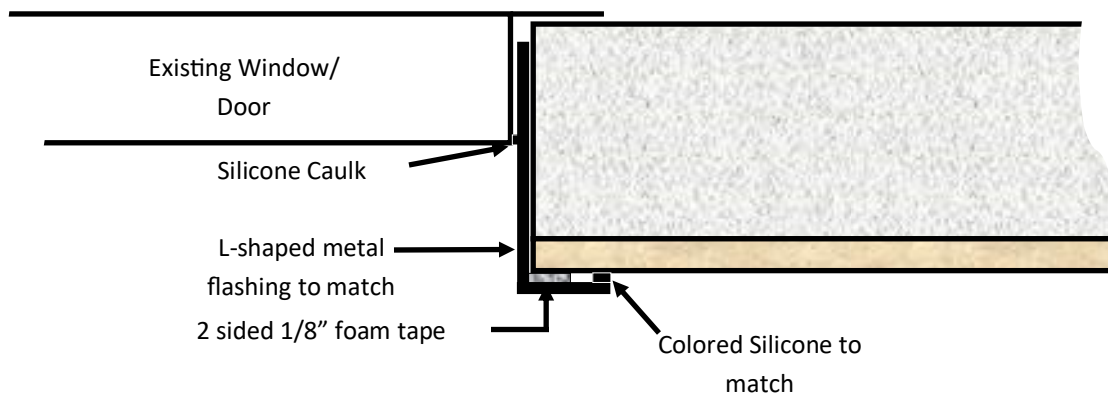
8

## Optional Porcelain Return on Butt End or Window Termination



9

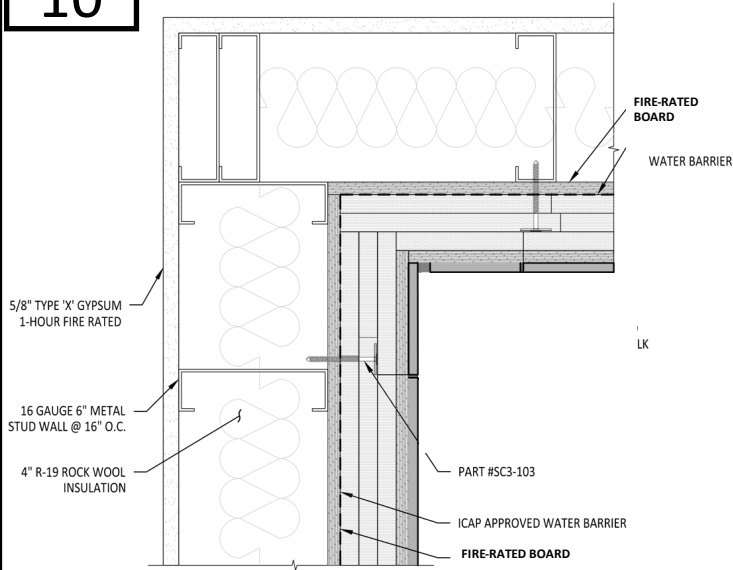
## Self-flashing Window Trim for Installation after siding is installed



Note: Traditional Metal Flashing required above the or window/door

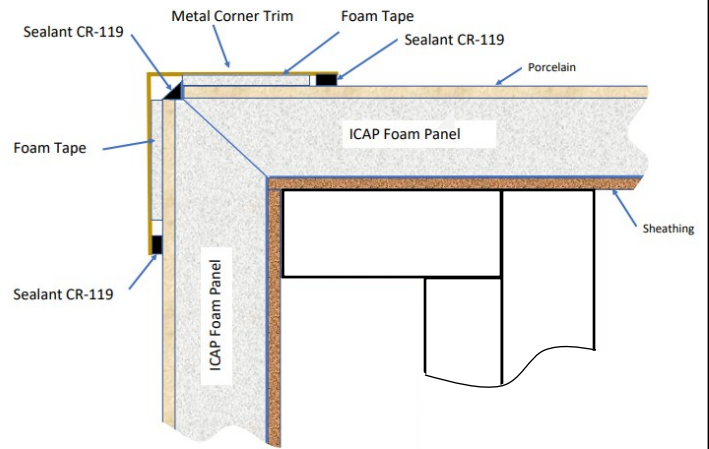
10

Inside Corner



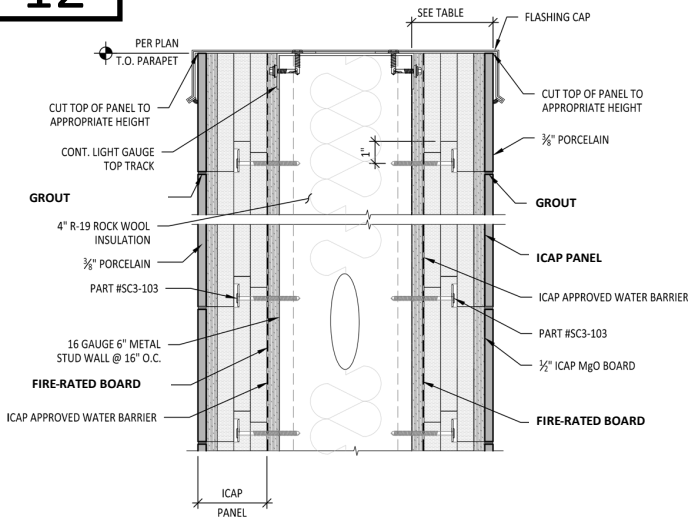
11

Outside Corner



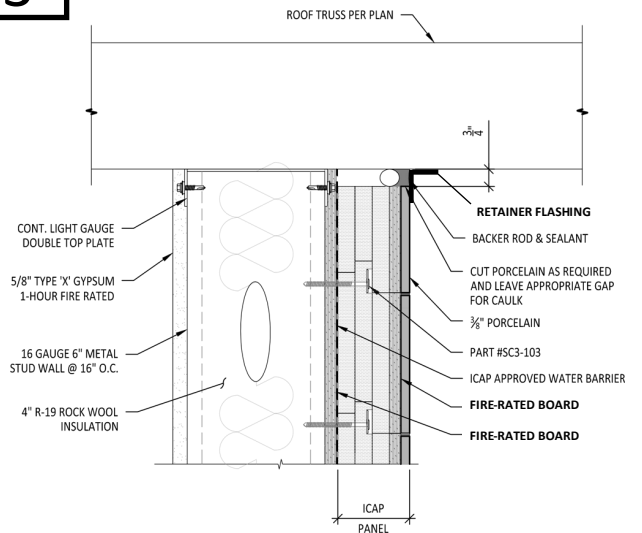
12

Parapet Cap



13

ICAP to Soffit Overhang



R-12 .25 INSULATION TABLE

ICAP PANEL MATERIAL	TOTAL PANEL INCHES	MILLIMETERS	PANEL R-VALUE
EPS FOAM	2.00"	50.8/101.6	R-9.70
BONDING ADHESIVE	.0625"	1.5875	N/A
PORCELAIN	.375"	9.525	R-.34
TOTAL	3.1875"	80.9625	R-10.04

NOTE:

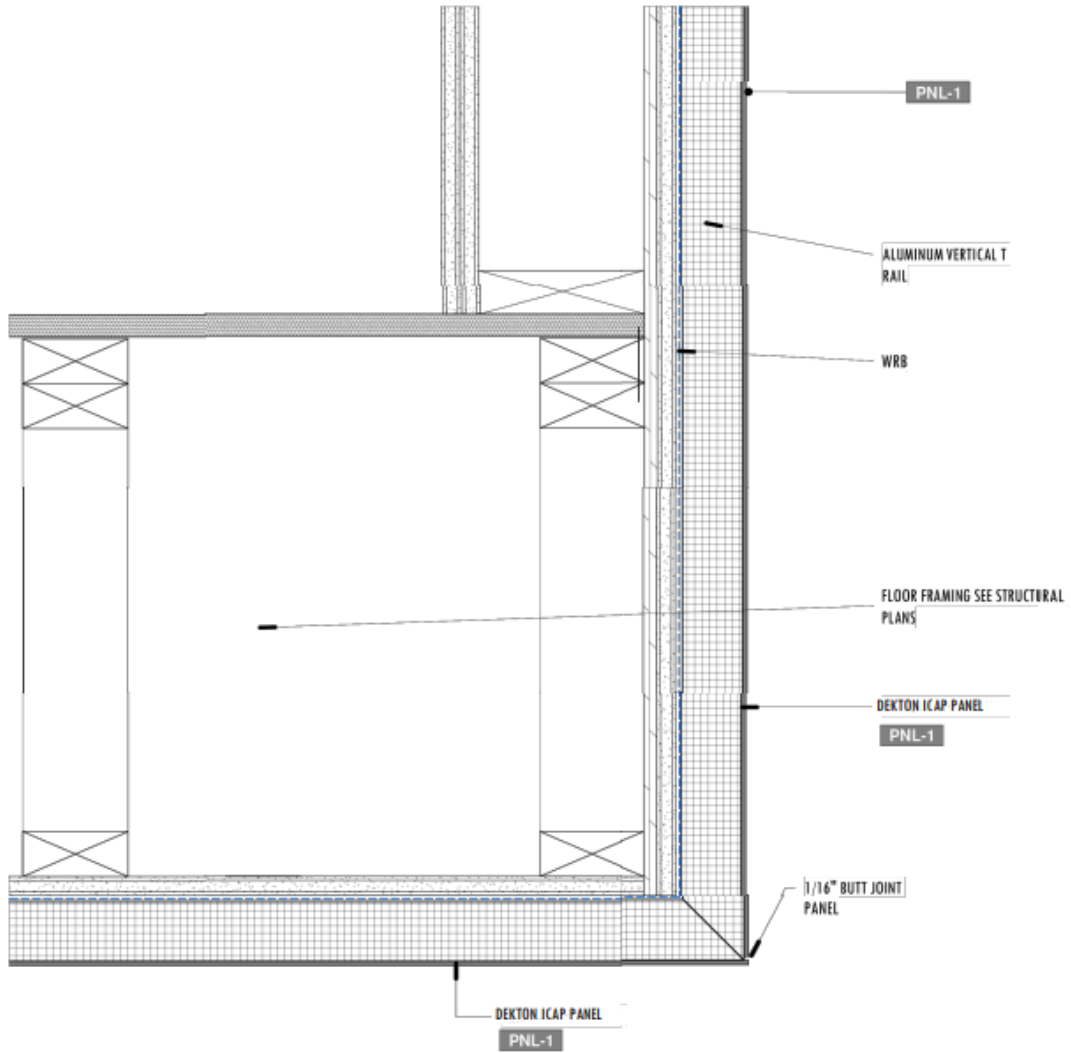
14

60 PSI - HIGH DENSITY EPS (ASTM 578 TYPE XV EPS) w/ AN R-VALUE OF 4.85 PER INCH. PORCELAIN : R-.34 VALUE /INCH

15

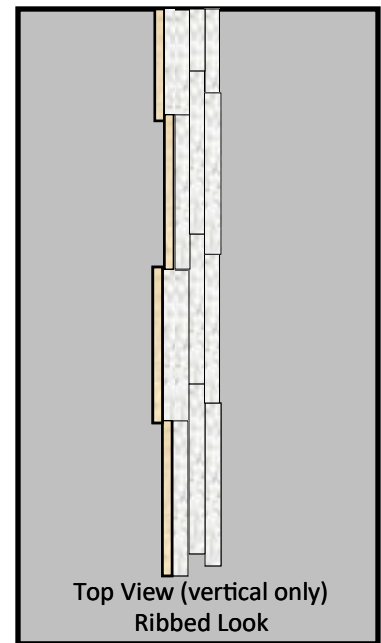
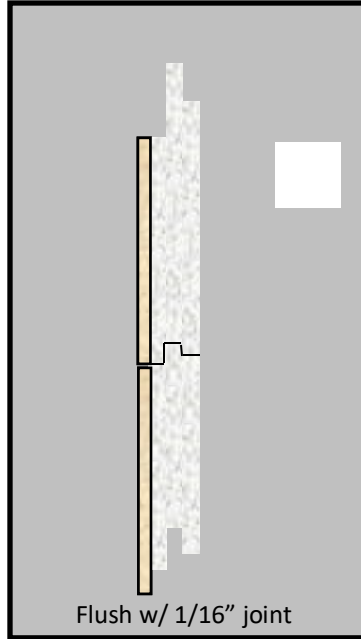
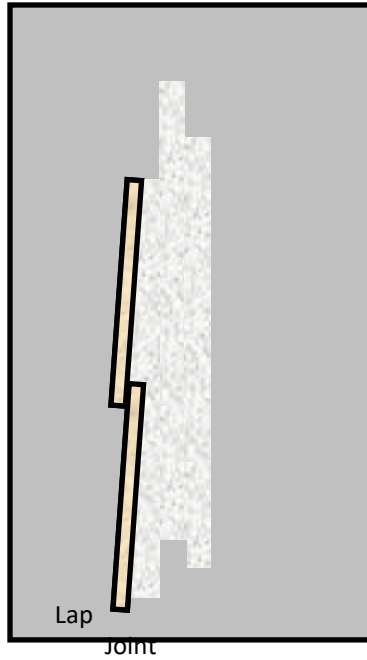
# Typical Soffits with Ceiling Return

## Side profile view



4 Soffit Section Detail @ Porcelain Panel Typical - NV2  
NOT TO SCALE

# ICAP Panel Configurations



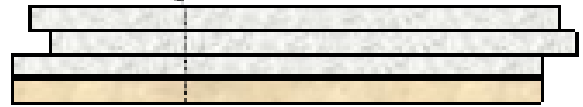
## Butt Splice (Used to adjust panels to wall length)

16

Top View

Cut to size here

Step #1

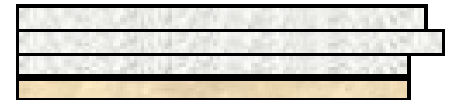


Apply 1/4" diameter bead of Dow 790 or 1199<sup>®</sup> silicone adhesive to the full length of cut

Step #2



Slide together tightly



Step #3



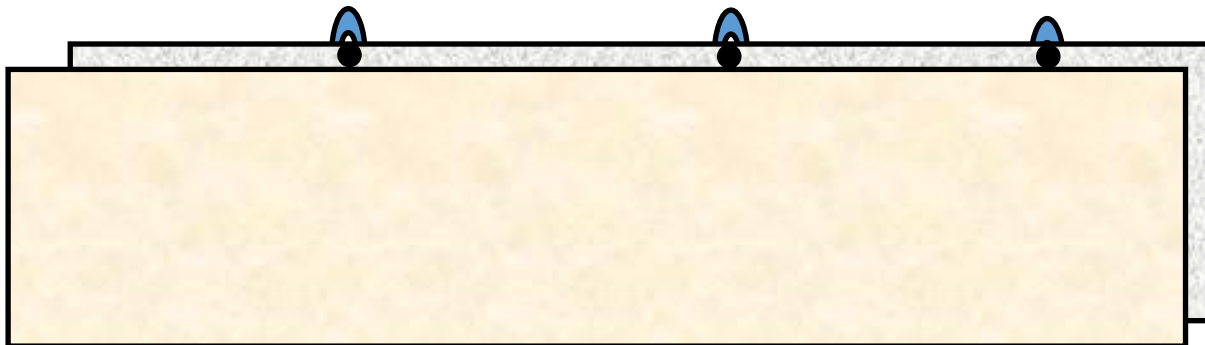
Install fastener through flanges

\*1199 supplied by CastleRock

9. **How do you deal with uneven walls:** Several options can be used to keep the face of the panels flush and eliminate lippage:
- Option "A":** Make sure the wall is as flat as possible and void of irregularities before you begin.
  - Option: "B":** If you only have one spot in the wall that has a ridge or is uneven, you can use a belt sander or bench sander with a 40 grit belt to sand part of the foam off of the back of the panel. This method also works for small conduits, ground wires, etc.
  - Option "C":** "Shims". Horseshoe shaped shims of various thickness are very inexpensive and can be used to "shim" the panels away from the wall at indentations. The horseshoe shape allows you to run a screw through the panel flange and will hold the shim in place (d).
  - d.



17





# Interlocking Tongue & Groove

Fast, Easy, Economical mortar-less installation panels staple or screw to the wall!  
(Optional Rainscreen)



Light Weight R-10 to R-20  
Porcelain Panels



Screw/washer or Wide Crown Staples  
through the foam attachment

## Vertical Installation Instructions

1. Install the starter metal making sure it is level and straight.
2. Install the window/door/protrusion trim around these locations as shown on page 12.
3. Begin installing the vertical panels at the side or corner of the wall space from right to left (horizontal panels install left to right).
4. Secure the panels to the wall with the fasteners and at the spacing shown on page 7. Stack the next panel on top keeping them aligned, straight and vertical. Continue to the top of desired height and cut the last panel to fit.
5. Use "leveling tools" as shown on page 19. Notice the sealant dallops on the tongue before interlocking. Allow at least 48 hours for the adhesive (Dow 1199 or 790) to cure before removing the leveling tools.
6. Begin the 2nd vertical row by cutting the panel to the desired stagger of the joints for the best visual appearance or as specified in the plans.
7. Repeat the process until you reach a wall penetration or protrusion such as a door/window, etc. Cut the panel horizontally at the bottom of the window. Then, cut the side section to the height of the window/door, etc. (be sure to allow for the backer rod & sealant) . Use the "Butt Splice method shown in this manual on page 18.
8. Cut panels to fit above the window/door, protrusion remembering to align the horizontal joints to maintain the pattern.
9. Select a corner termination from the choices on page 14 &15.
10. Inside corners and parapets are shown on page 16.
11. Terminate at the top of the wall or soffit with flashings or as shown on page 16 & 17.

For any special installation situations requiring assistance, please reach out to ICAP/CastleRock at 208-859-4200 or les@castlerockx.com.



# Cutting CastleRock Insulated Porcelain Panels

Below are some common brands of saws used to cut the CastleRock Panels. See instructions on the following page.



## Super Thin Diamond Ceramic Saw Blade Porcelain Cutting Blade for Cutting Ceramic Or Porcelain Tile

Visit the GoYonder Store

★★★★☆ 1,557 ratings | 18 answered questions

Best Seller

\$11.74

Get Fast, Free Shipping with Amazon Prime & FREE Returns

Clip Save 5% with coupon. Terms

Get \$50 off instantly. Pay \$0.00 \$11.74 upon approval for the Amazon Rewards Visa Card. No annual fee.

Size: 5-Inch

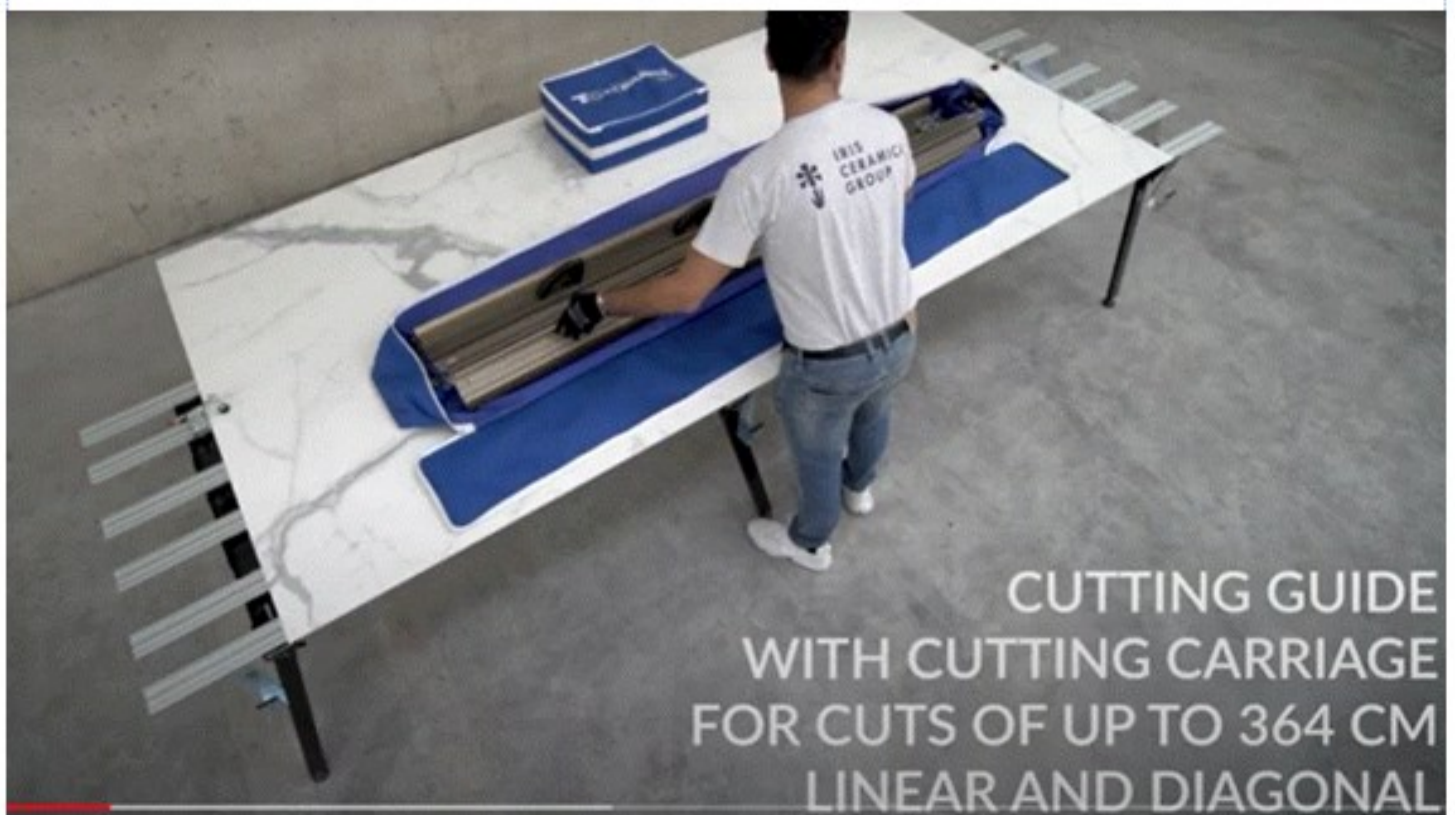


Oscillating Tool for cutting foam and removing adhesive form the back of tile.

## How to cut CastleRock Insulated Porcelain Panels

1. Place the panel with the porcelain upwards and the foam side downward on a table or saw horse assembly.
2. Set up a saw guide and clamp it to the panel for a straight cut.
3. If you are using water on the saw blade as you cut, only cut about 1/2" into the foam.
4. Once you cut the porcelain, use the hand saw shown on the previous page to cut through the foam.
5. If you are dry cutting, you can cut all the way through the foam panel in one motion.

**Below is a typical cutting table with slats to allow the saw blade to cut in between without cutting the table.**



Click the following link to go to your YouTube videos:

[Large Format Manipulation: Slab System - YouTube](#)

# ICAP-USA

## Porcelain Cladding Maintenance Instructions

ICAP Porcelain Cladding can be installed in numerous design possibilities and a variety of looks. The Porcelain is easily cleaned due to the nature of the porcelain and its impervious surface. The grout joints are more vulnerable and should be treated carefully based on the type or grout :

### Routine Porcelain Tile Care

Regular, basic cleaning with warm water and mild soap is sufficient to keep porcelain cladding looking good. You can also use gentle, everyday multipurpose spray cleaner to remove hard water deposits and mildew. Do not use cleaning products that contain acids or ammonia (and other harsh chemicals) as these can damage grout and glazed surfaces of the tile. Cladding can be spray washed at normal residential water pressure levels or with low pressure washers. Do not hold nozzle closer than 24 inches from the tile or grout to avoid damage of force waater between joints.

### Grout Care

100% Silicone Grout: This grouting method may be cleaned in the same manner as routine porcelain care described above. Be careful not to force water in the grout seams or damage the silicone.

Cementitious Grouts: This type of grout should not be cleaned until it is completely dried and cured, then the grout should be treated with a silicone sealer. Grout, the material used to fill the spaces between tiles, is porous, and sealing it at this time will simplify maintenance in the future (Epoxy grouts and 100% silicones grouts do not require a sealer). We recommend you apply a sealer at least twice a year for maximum stain protection over cementitious grouts.

### Heavy Duty Cleaning

Neglected or situations where extreme dirt, smog, mold, mildew or dust is common may require more intensive cleaning. Clean glazed wall tiles with a scouring powder or all-purpose cleaner applied to a non-metallic pad. Rinse and wipe dry. In extreme cases use a commercial tile cleaner, or apply a strong solution of an all-purpose, non oil-based cleaner or scouring powder paste. Let stand for five minutes, brush and scrub. Then rinse with clean water and wipe dry..

### Purchasing Maintenance Products

Ceramic tile and Natural Stone cleaning products and sealants may be purchased at your local home center or floor covering store. Consult the manufacturer of the cleaner or sealant for usage instructions and more detailed information about how its specific cleaning solution

### **DO NOT...**

Use cleansers containing acid or bleach for routine maintenance.

Use wax cleaners, oil-based detergents or sealants to maintain your tile (sealants may be used on grout joints).

Use ammonia (it will discolor grout).

Use harsh cleaning aids like steel wool pads or scouring pads containing metal.

Use a cleaning agent that contains color



# CastleRock/ICAP™

## 10 YEAR EXPRESS LIMITED WARRANTY

### WHAT DOES THE LIMITED WARRANTY COVER?

InsulStone, Inc., DBA ICAP-USA™ warrants to the original purchaser/consumer at the time the products are installed, to be free from defects in material and workmanship in the course of manufacture.

This warranty is limited to the terms and conditions, exclusions and limitations, requirements and legal rights stated in this Warranty. In the event of repair or replacement under the terms of this warranty, the original warranty shall be limited to replacement or repair of the defective product and will extend for the balance of the warranty period from the date of the original installation. The coverage offered by this Express Limited Materials Warranty to the original purchaser and may only be transferable to subsequent purchasers with the prior written approval of ICAPUSA.

### WHO IS COVERED AND HOW LONG DOES THE COVERAGE LAST?

Should a material defect occur within 5 years of the original purchase by the registered purchaser, the manufacturer will in its sole discretion, replace the defective product before it is installed, or, during the first 5 years, reimburse the party for losses up to no more than twice the manufacturers selling price of the defective portion of the Product. During the 6<sup>th</sup> through 25<sup>th</sup> year, the warranty coverage shall be reduced by 5% per year such that after the 25<sup>th</sup> year all warranty coverage shall cease and the warranty coverage shall be terminated. The

Manufacturer's replacement of the defective product or granting of a refund pursuant this Warranty shall be in its sole discretion and the sole exclusive remedy available to the covered party with respect to any defect. MANUFACTURER WILL NOT REFUND OR PAY ANY COSTS IN CONNECTION WITH LABOR OR ACCESSORY MATERIALS.

### WHAT DOESN'T THIS WARRANTY COVER?

This warranty does not cover damage of any kind resulting from: Faulty or improper installation

- Any and all labor for repair or replacement of warranted parts.
- Shipping costs for replacement parts.
- Movement, waving, buckling, or other distortions.
- Damage from impact or contact with foreign objects, chemicals, etc.
- Damage from failure to properly maintain the Product.
- Installation of the Product in direct contact with dissimilar materials or use of incompatible caulking, adhesives, fumes, vapors or coatings.
- Changes in the surface color resulting from exposure to the elements (i.e. soiling, staining or discoloring resulting from local conditions which InsulStone, Inc. has no control over.
- Settlement or shrinkage of the property or structure.
- Fire or heat from barbecues, heaters, vents, etc.
- Lightning, hurricane, tornado, windstorm, earthquake, hail, snow or ice accumulation, or other acts of God.
- Surface deterioration from air pollution, or seacoast environment.
- Abuse, misuse, vandalism, or abrasion.
- Product that has been painted, coated, colored or altered.
- Chips, cracks that do not affect the performance of the Product are not covered under this warranty.
- Any other causes beyond InsulStone/ICAP-USA's reasonable control.
- Substitution or use of specialty parts not listed in ICAP-USA's standard parts and rice list.

### OTHER LIMITATIONS:

ICAP-USA cladding is designed for use as exterior cladding installed in accordance with its published installation instructions and should not be used as roofing, floors, on ceilings, or in locations that require water tight protection.

We reserve the right to discontinue or change any design, color or texture, of any of our products at any time and without notice or liability. If, for any reason, you make a warranty claim and the product type originally installed is no longer available, we may substitute another product determined by us to be of comparable quality and price.

There are no warranties expressed, implied or written that ICAP-USA accepts responsibility for other than this Warranty.

4. ICAP-USA IS NOT RESPONSIBLE FOR ANY CONSEQUENTIAL OR INCIDENTAL DAMAGES ARISING OUT OF ANY BREACH OF THIS

EXPRESSED WARRANTY, OR ANY OTHER ORAL, WRITTEN OR IMPLIED WARRANTY THAT MAY APPLY TO YOUR PURCHASE, AS IT RELATES TO OUR PRODUCTS.

5. THIS IS YOUR EXCLUSIVE WARRANTY AND IS IN LIEU OF ALL

OTHER WARRANTIES, EXPRESSED OR IMPLIED, INCLUDING BUT NOT LIMITED TO IMPLIED WARRANTIES OF MERCHANTABILITY AND FITNESS.

This warranty gives you specific legal rights. You may also have other rights which vary from state to state. SOME STATES DO NOT ALLOW THE EXCLUSION OR LIMITATION OF INCIDENTAL OR CONSEQUENTIAL DAMAGES, SO THE ABOVE LIMITATION OR EXCLUSION MAY NOT

APPLY TO YOU. FAILURE OF PART OF THIS WARRANTY TO COMPLY WITH LOCAL OR FEDERAL LAW DOES NOT VOID DOCUMENT IN ITS ENTIRETY. This warranty shall be interpreted under the laws of the State of Idaho.

### HOW DO I REGISTER THIS WARRANTY?

One application per property location where ICAP-USA/InsulStone, Inc. cladding is installed must be completed and mailed to ICAP-USA/InsulStone, Inc. P.O. Box 1258 Meridian, ID 83680 within 30 days after the original installation has been completed. The notice should include the following: (1) Name of owner

(2) Address of property or location of the installation (3) Date of purchase (4)

Proof of purchase

### HOW DO YOU SUBMIT A WARRANTY CLAIM?

You must submit a claim in writing with us within the warranty period and within a reasonable period of time after the defect is discovered. To initiate the claim, please go to [www.icap-usa.com](http://www.icap-usa.com), contact us at [sales.icap@gmail.com](mailto:sales.icap@gmail.com) or by mail at:

ICAP-USA/InsulStone, Inc., PO Box 1258, Meridian, ID 83680. Phone#: 208.895.8557

ANY REPAIR OF THE PRODUCTS UNDERTAKEN WITHOUT PRIOR WRITTEN AUTHORIZATION FROM ICAP-USA/INSULSTONE, INC. PRIOR TO RECEIVING WRITTEN APPROVAL FROM INSULSTONE, INC. WILL VOID THIS WARRANTY.

This Warranty is effective as of 09/01/2016 and replaces all prior warranties.

Owner \_\_\_\_\_

Installation Address: \_\_\_\_\_

Name of installing Contractor: \_\_\_\_\_

Date Installed: \_\_\_\_\_

Date of Completion: \_\_\_\_\_

Phone # \_\_\_\_\_

Owner Signature \_\_\_\_\_

Return a copy of this Limited Materials Warranty to CastleRock/ICAP-USA PO Box 1258 Meridian, ID 83680