

CastleRock™ Brand

INSULATED PORCELAIN CLADDING PANELS

The original interlocking continuous insulated porcelain cladding

- Provide R-10 to R-30 continuous insulation values
- Comply with ASTM E-84 Flame Spread & Smoke Generation
- Comply with ASTM E-330 Uniform Load requirements
- NFPA 285 Compliant
- Hurricane – Dade County Requirements
- Airborne Sound Transmission (STC) rated

DESCRIPTION

CastleRock C-Series Exterior Insulated Porcelain Wall Cladding Panels feature zero flames spread and smoke generation, Uniform loads up to 127 lbs./sq. ft., on a one-piece, porcelain clad, interlocking, high density foam panel with mechanical fasteners to attach to 7/16" min. plywood sheathing with specified staples; or to wood or metal studs on 16" centers with specified screw/washer assemblies; or to Type X gypsum with specified screw/washer assemblies. ETL Listed through Intertek Laboratories.

INTENDED FOR

- Commercial or residential applications over 7/16" min. plywood, OSB or equivalent sheathing or Type X Fire-rated sheetrock panels
- A weather or air resistive barriers complying with ASTM E 2357 and
 1. Avoid exposure to sustained temperatures exceeding 125 degrees F (52 degrees C).
 2. Avoid exposure to excessive, repetitive, or continuous moisture before, during and after installation. Eliminate sources of moisture immediately.
 3. Must be stored off the ground and under cover.

LIMITATIONS

Fastener Requirements and locations

Note: Locate fasteners a min. of 1" from the edge of the foam tongue or as specified in the Installation Guide.

Fastener	Size	Spacing	Lbs./sq.ft.
Non-corrosive staples	16 Ga. 1"x 2-1-1/2"	3" OC	127
Non-corrosive wood screws	#8 x 3-1/2"	To studs 16" OC & sheathing 8" OC	106
Non-corrosive TEK Screws	#8 x 2-1/2"	To studs 16" OC & sheathing 8" OC	106
Spax	1/4" x 3-1/2"	5/8" Type X Gypsum	125

Wall Preparation

Wall and Sheathing Preparation:

- Walls must be straight and flat. CastleRock Cladding panels will follow the surface of the wall and will show waves or bumps if not flat and straight. If it is determined walls are not straight and flat, contact the project manager or owner and have the situation remedied. See Installation Guide for helpful information.
- Inspect sheathing joints for a tight fit and secure attachment to wall per the sheathing manufacturers requirements.
- Install a Weather Resistive Barrier (WRB) or Air Barrier in accordance with local building codes. If codes are not applicable use the requirements of IBC or IRC Codes.

TEST DATA

Property		ASTM Test Method	Requirement	Meets
Surface Burning Characteristics	Flame Spread	E84	Flame Spread Index, not greater than 25'	Zero
	Smoke Developed	E84	450	Zero
	Class A	E84	Flame Spread not greater than 25 and smoke developed not greater than 450	Meets

C-SERIES PANEL SIZES

PANEL THICKNESS	MAXIMUM WIDTH	MAXIMUM LENGTH	R-VALUE
2"	24"	126"	R-10
3"	24"	126"	R-15
4"	24"	126"	R-20

PRODUCT DATA

D-SERIES (REQUIRES CENTER additional J-HOOK(s) for spans wider than 24" – SEE INSTALLATION GUIDE).

PANEL THICKNESS	MAXIMUM WIDTH	MAXIMUM LENGTH	R-VALUE
2"	56"	120"	R-10
3"	56"	120"	R-15
4"	56"	120"	R-20

- Note:
- 1). All R-values are continuous insulation actual values
 - 2). See NFPA 285 Installation Guide for special installation instructions.
 - 3). All Series can be installed vertically, horizontally or diagonally.

Compliance

- Tested to ASTM E84 fire resistance, surface burning characteristics and noncombustibility
- Tested to ASTM E330 Uniform Load Testing
- Tested to ASTM S102 Canadian Flame Spread Characteristics
- Tested to NPA 285 Flame Propagation Characteristics (Series 285)
- EPS Tested to E84 Surface Burning Characteristics
- PORCELAIN TESTED TO ANSI A137.1
- NFPA 285 Compliant
- Installation Guides Available at www.castlerockx.com/resources

PRODUCT INFORMATION

See: www.castlerockx.com/resources for the most up to date product information.

CAUTION: Dust from dry cutting porcelain may contain hazardous particles. Be sure to wear OSHA compliant protective gear when cutting or handling porcelain. Wet cutting is the safest, but EPS foam can cause the diamond blade to catch or stick. Take due precaution when cutting.

Trademarks: The trademarks of CastleRock™ and Logos are property of CastleRock Building Products, Inc. The trademarks of IBC & IRC are property of International Code Council, Inc.

Note: The products and information contained in this document are subject to change without notice.

Notice: We shall not be for incidental or consequential damages directly or indirectly sustained nor any loss cause by application of these goods not in accordance with current printed instructions or for other intended use. Our liability is expressly limited replacement of defective goods. Any claim shall be deemed waived unless made in writing to us within thirty (30) days from the date it was or reasonably should have been noticed.

Safety First: Follow good safety and industrial hygiene practices during handling and installation of all products and systems. Take necessary precautions and wear protective equipment as needed. Read Safety Data Sheets and related literature on products before specification and/or installation.

SUBMITTAL APPROVALS

Job Name	
Contractor	Date

CastleRock™

ICAP C-Series

E84 Series - R-10 to R-20 Installation Guide

Warning:

(Read these instructions thoroughly before attempting to install)

ICAP-USA™ Cladding – Patent #: USA #8,176,701B2, Canada 2,588,294

Test reports and certifications are listed below:

Intertek/Warnock Hersey Test Reports W/N 20269

Intertek test reports available at www.spec-direct.com

CastleRock website www.castlerockx.com

Installation Guides available at www.castlerockx.com

Or by contacting us at info@castlerockx.com

Testing conducted in accordance with the following:

Evaluation Guide: ICC EG 315

ASTM E330(2002): “Standard Test Method for Structural Performance for Exterior Windows, Doors, Skylights and Curtain Walls by Static Air Pressure Difference”

ASTM E84(2009) -08a “Standard Test Method for Surface Burning Characteristics of Building Materials”

CAN/ULC S102 (2007) “Standard Test Method for Surface Burning Characteristics of Building Materials”

ASTM C578 “Standard Test Methods for EPS Foam”

ANSI A137.1-2012 American National Standard Specifications for Ceramic Tile - Version 2013.1

ASTM C373 Standard Test Methods for Determination of Water Absorption and Associated Properties by Vacuum Method for Pressed Ceramic Tiles and Glass Tiles and Boil Method for Extruded Ceramic Tiles and Non-tile Fired Ceramic Whiteware Products

Summary

ASTM E84, CAN/ULC S102 (2007)

Flame Spread Rating: 0

Smoke Generation Rating: 0

Workmanship

This Installation Guide assumes the construction personnel have knowledge of the materials described and their proper methods of installation. The manufacturer recommends certified installers be used to install ICAP products. Installer certification is available through the ICAP-USA "Factory Certified Installer" program. Contact us at 208-895-8557 for details.

Preparation

Prior to commencing activity related to the scope of this Guide, review all adjacent products and other subcontractor work that precedes the installation of ICAP-USA cladding ensure proper workmanship is reflected and that there are no recognizable errors or deficiencies.

Building Code Requirements

Building code requirements vary from area to area. Check with local authorities for building code requirements for your area and application. Carefully read all sections of this guide and follow the manufacturer's Installation Instructions before proceeding with your ICAP application. In the event the local building codes conflict with other statements made in this document, contact the manufacturer for additional guidance.

Material Requirements:

Flashing

All flashing and flashing accessories must be corrosion resistant materials and integrated with the WRB materials or flashings recommended by the air/water resistant barrier manufacturer for use with their products. Flashing must be installed at all through the wall penetrations and at terminations of ICAP panel system, around doors, windows and other protrusions in accordance with local building codes.

Weep Screed

Some jurisdictions require weep screeds or termite barriers. These must be made of corrosion resistant metal a minimum of .019 inches or 26 gage thickness; or plastic weep screed a minimum of 0.050" with a minimum vertical attachment flange of 3 1/2" wide.

Walls and Wall Systems

ICAP-USA ICAP Substrate Panels are designed to attach to the following wall substrates with manufacturer approved fasteners. See table on the next page to determine the appropriate fastener for your application.

Recommended Clearances:

- ICAP Substrate Panels individually attach to the wall or studs and do not require a brick ledge support like masonry products.
- Check with your local building official for requirements above grade and concrete/paving in your area. (slope away from the structure in accordance with local building requirements)
- ICAP-USA™ is a cladding product and all components used in its manufacture are waterproof. Consult with your local building official regarding requirements in your area.

Cautions:

- Do not subject ICAP-USA™ Claddings to frequent water contact such as sprinklers or direct spray. Place downspouts or drainage pipes so the water is not frequently contact the cladding.
- Do not subject ICAP-USA™ to contact with de-icing materials, salt, asphalt roofing material or its drainage, or other harsh chemicals. Prolonged exposure may damage the fascia or panel.
- Do not expose the EPS foam portion of the panel to extended periods of sunlight. All surfaces for EPS must be covered with fascia, flashing, other materials to protect it from UV exposure.

ICAP Series

Installation Guide

	<u>R-Value</u>	<u>Height Range</u>	<u>Length Range</u>
Flat Panels	10-20	5" - 22-1/2"	22-1/2" - 126"

Note: Panels sizes are dictated by porcelain panel sizes. Check with ICAP for available sizes.

<u>Tools Required</u>	
Screw gun w/ adjustable torque chuck:	
Torque Drives: T-21 & T-25 - Screws: See Table "A"	
Diamond Porcelain blade, water cooled saws: Bridge saw, circular saw, or track saw.	
Oscillating Tool: For cutting or removing foam, fireboard or cleaning adhesive from the back of porcelain tile	
Saws (Diamond Blade):	
4-1/2" water cooled circular saw (Dewald, Milwaukee, etc.)	
4- 1/2" Right Angle Grinder	
Wet/dry diamond blades for saws	
Oscillating Tool blades	
Scaffolding/manlift (w/window pkg. May be required for large panels)	
Ladders	
Normal Carpentry and Construction Tools	
Safety Equipment	

Fastener Chart For CastleRock/ICAP Panels

Type X Gypsum Sheathing, Wood or Metal Studs with OSB/Plywood Sheathing

5/8" Densglass Type X Gypsum

<u>Spax® Brand</u>	<u>Densglass® Type X Gypsum</u>	<u>ICAP Panel Size</u>	
		<u>up to 24" Narrow Direction</u>	<u>Lbs./sq.ft.</u>
1/4" Power Lag	Fasteners Spacing C-C	4"	103.6
	Fasteners Spacing C-C	6"	77.7
VersaFast™ VF-3250	Fasteners Spacing C-C	3"	92.2
	Fasteners Spacing C-C	4"	73.7

5/8" GlasRoc Type X Gypsum

<u>Fastener</u>	<u>Sheathing</u>	<u>ICAP Panel Size</u>	
<u>Spax® Brand screws</u>	<u>GlasRoc® Type X Gypsum</u>	<u>up to 24" Narrow Direction</u>	<u>Lbs./sq.ft.</u>
1/4" Power Lag	Fasteners Spacing C-C	4"	136
1/4" Power Lag	Fasteners Spacing C-C	6"	102
VersaFast™ VF-3250	Fasteners Spacing C-C	4"	103.6
	Fasteners Spacing C-C	6"	77.3

Note: All Lbs./sq.ft. rating include ASTM E330 safety margin calculation

To Wood or Metal Studs with OSB/plywood Sheathing

<u>Fastener to Stud</u>			
<u>Metal Stud</u>	<u>Wood Stud & Sheathing</u>	<u>Fastener to OSB/Plywood</u>	<u>Lbs./sq.ft.</u>
# 10x 1-1/4" TEK Screw	#10 x 1-1/4" Deck Screw	Studs & 8" O.C. to Sheathing	88

Fastener to OSB/plywood Sheathing

<u>OSB/Plywood Sheathing</u>	<u>Fasteners to Studs</u>	<u>Fastener Spacing</u>	<u>Lbs./sq.ft.</u>
1" Crown x 2-1/2" Staples	Not Required	3" O.C.	126

All fasteners require min. 1-1/4" diameter corrosion resistant fender washers. Some areas near salt water may require stainless steel fasteners and washers or 1,000 hour corrosion resistant screws. Check with you local building official for code compliance in your area. (Note: ICAP fasteners are concealed in the foam and not exposed to exterior elements.

ICAP-USA

Installation Guide For NFPA 285 Compliance (R-12 & R-7)

Fascia Style : Porcelain

A). Interface with Other Work:

Coordinate with installation of substrate required for installation. If Electrical, Plumbing and other Mechanical penetrations are installed after the exterior siding panels are installed, provisions for watertight sealing of all penetrations must be addressed.

B). General: **Construct the wall in accordance with local building codes. In the absence of local building codes, install in accordance with the requirements of the IRC/IBC and the manufacturers installation instructions. Use a qualified installer. Wall preparation and requirements:**

A. These instruction's are for metal framed walls with a minimum of 22 gauge nominal 2" x 6" corrosion resistant steel studs located a maximum of 16" on center and framed in compliance with local building codes.

B. Substrate Sheathing: Non-load bearing walls: The metal framed wall is required to be sheathed with minimum of 7/16" OSB, plywood or 5.8" Type X Gypsum.

C. An Air/weather Barrier complying with local building codes or zip panels installed in accordance with manufacturers instructions.

These manufacturers and products are recognized and required as part of the **CastleRock/ICAP NFPA 285 compliant system**. Check with your local building official for weather resistant barrier requirements and codes in your area. For details regarding the installation of for each specific air/weather barrier system, see their instructions available on the websites as listed above.

C.). Flashings:

Install flashings in accordance with the air/weather barrier, window and roofing manufacturer's installation instructions, or in the absence of these instructions, install per section 703.8 of the 2009 International Residential Code (IRC) at the following locations:

- a). Top of all doors and windows. A metal flashing is required at the top of each window, door and protrusion to prevent water from entering the wall cavity.
- b). Flashings may be required at projecting lips or conversion to masonry or other sheathing, or an areas that may allow water to enter.

Check with your local building official for requirements in your area..

D). Installation of ICAP Interlocking Insulated Panels:

- a). **Inspect the wall to assure correct fit of substrates and framing. Studs: 16" or less on center with the correct sheathing requirements listed above.**
- b). **Prior to installation** of the starter section, determine its desired location in regard to elevation and relationship with the foundation,. See instructions in this manual for details of termination points.
- c). **Install the Starter Section** (Part# SSS-048) – Install the starter section over the weather resistive barrier at the bottom of where the panels are to be installed and overlap the starter metal a minimum of 1" over the foundation. Install in accordance with local building codes. If codes are not present, the manufacturer recommends a minimum of 6" above grade and 2" above pavement surfaces. Attach the starter section with corrosion resistant screws or nails to the sheathing or plate every 6 inches on center. Starter section must be straight & level.
- d). **Fastener Attachment Pattern:** Secure the panels to the wall using the specified fasteners at the specified spacing. See fastener chart on page 4 of this manual. See Table "A".
- e). **Panel placement**

The tongue flange must always be placed upward to prevent water intrusion into the wall. The panels are designed to be installed from bottom up and left to the right. Inspect each panel for flaws or damage prior to attaching to the wall. Use a level to ensure each row is straight and level before attaching to the wall or proceeding to the next row.

“Continue to install per the instructions provided in the drawings below:

Fasteners



SCW10300

Standard ICAP Screw/Washer Assembly: #9 x 3" Zinc Plated or Stainless Steel—T-25 Torque Drive, Course Auger Thread, Type 17 Point. Used to attach EPS Foam Panels to Studs.



TEK10300

TEK screws for use with ICAP screw/washer assembly to attach to metal studs.

Please Note: Item in picture may not reflect size and finish of actual part



SSS04800

Starter Strip: 48" long section of the starter strip used at the bottom of the wall to receive the groove flange of first row of panels.



SCW08200

Screw for Starter Metal attachment #8 x 2" min.

T-STAR Washer Head HCR®

POWERLAGS™

Part # SPAX143HCR or SPAX144HCR screw/washer assembly for attaching ICAP panels to Type X Gypsum sheathing

EXTERIOR

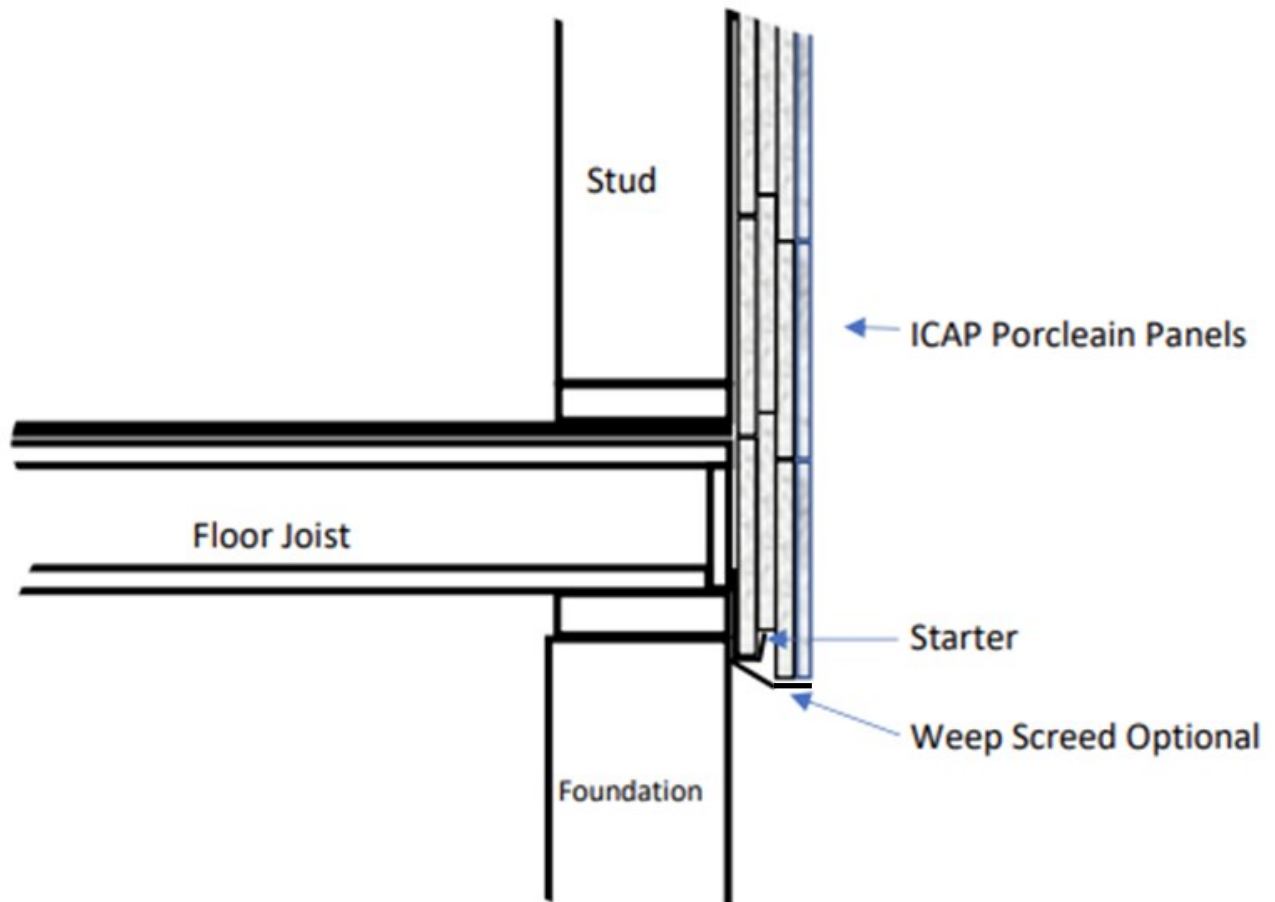


SPAX143HCR OR SPAX144HCR



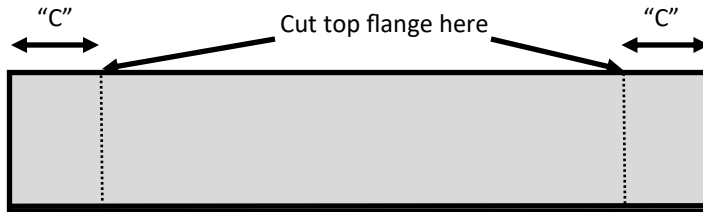
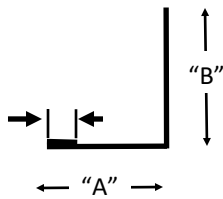
GRIP12500: Grip-Plate 1-1/4" washer for use with all screw/washer assemblies

Starter metal at base of wall

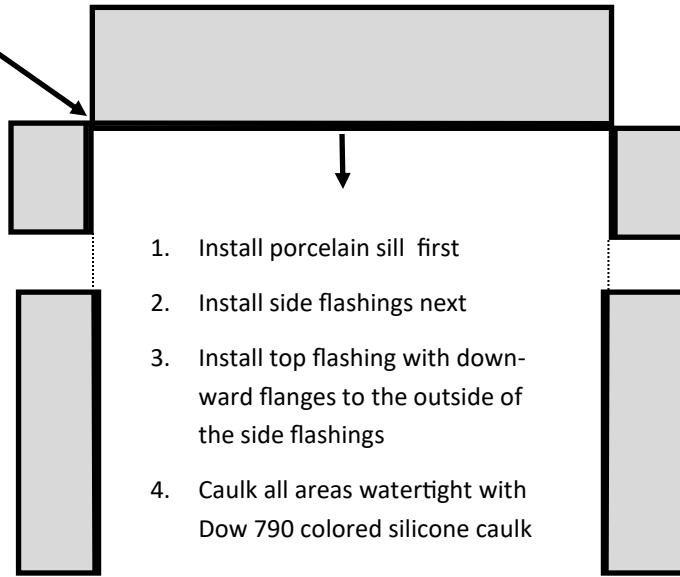


ICAP Window, Door, Opening Flashing Details

Formed metal flashing



Bend Here



1. Install porcelain sill first
2. Install side flashings next
3. Install top flashing with downward flanges to the outside of the side flashings
4. Caulk all areas watertight with Dow 790 colored silicone caulk

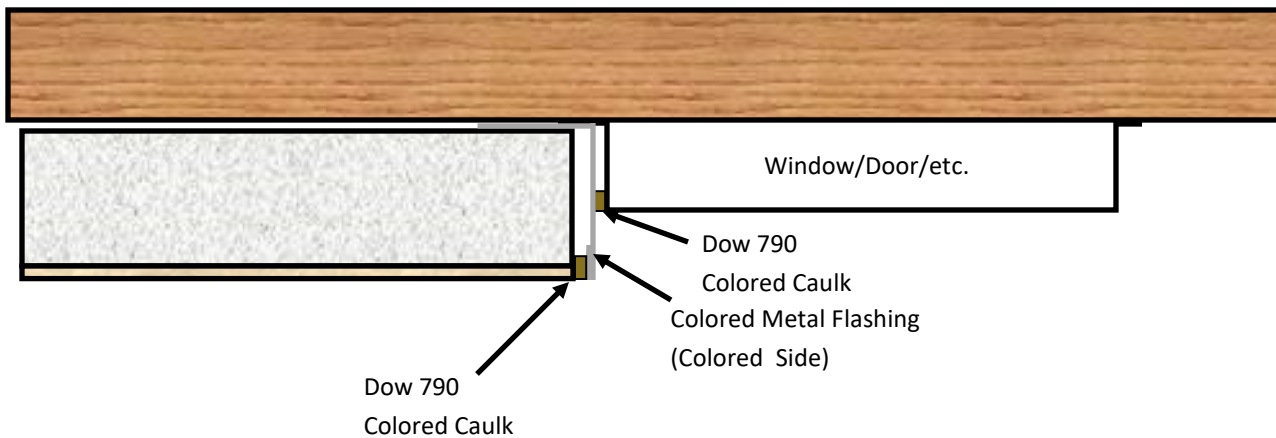
	R-10	R-20	Hem
A	2-3/8"	4-1/2"	1/2" min
B	3"	3"	N/A
C	1" min.		
D			
	Galv. metal	28 gauge	Min.
	Aluminum	.030"	Min.

1. Sill 7 degree slope
2. Panel fascia overlap 1/4" min.
3. Caulk joints



Caulking Instructions

(Caulk all penetrations water tight using sealant manufacturers installation instructions & backer rod if required)



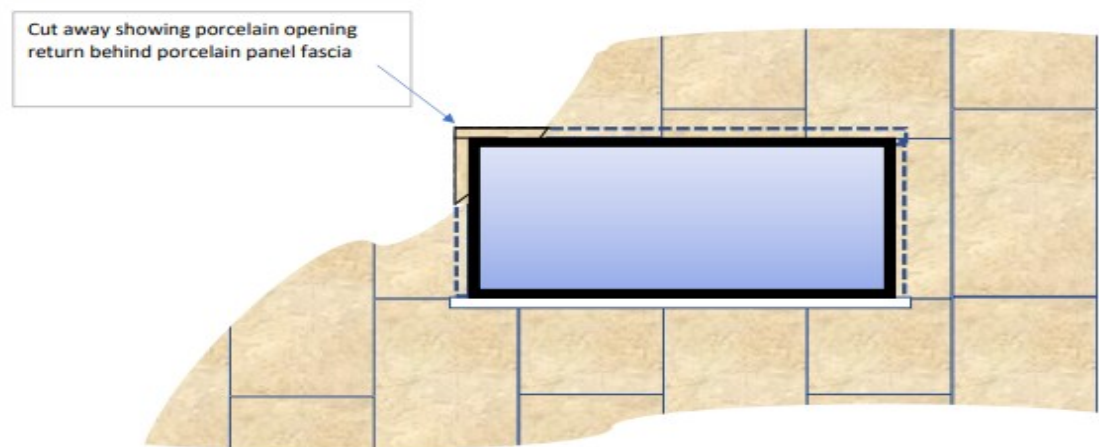
Porcelain Window/Door/Opening Returns

Step # 1



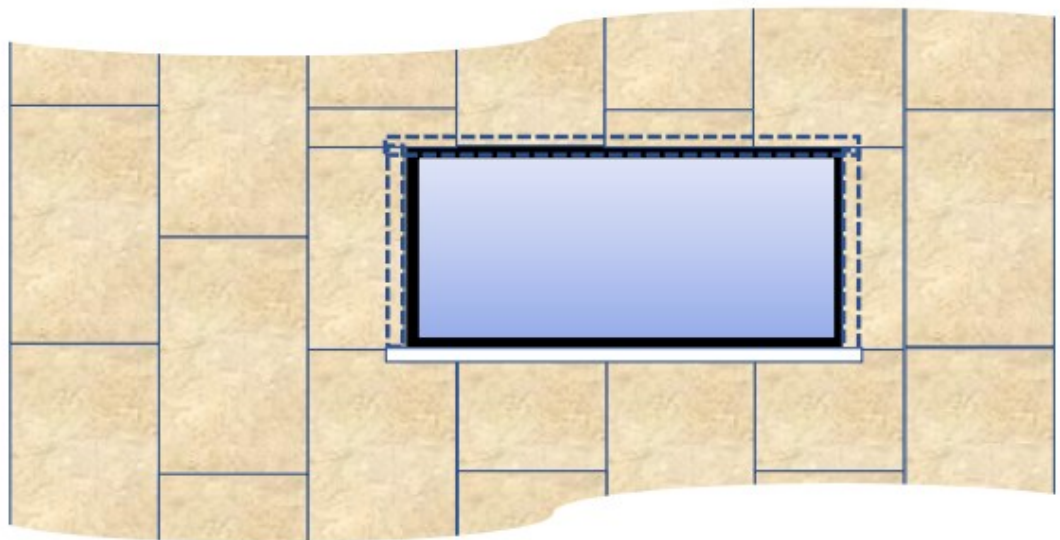
- A. After cutting the porcelain fascia panels to fit the window opening and allowing for caulking details:
- B. Remove a section of foam 3/8" wide from behind the porcelain fascia as shown in the above detail on the top and sides of the opening.
- C. Note: Using an "oscillating cutting tool" to remove the foam is recommended

Step # 2



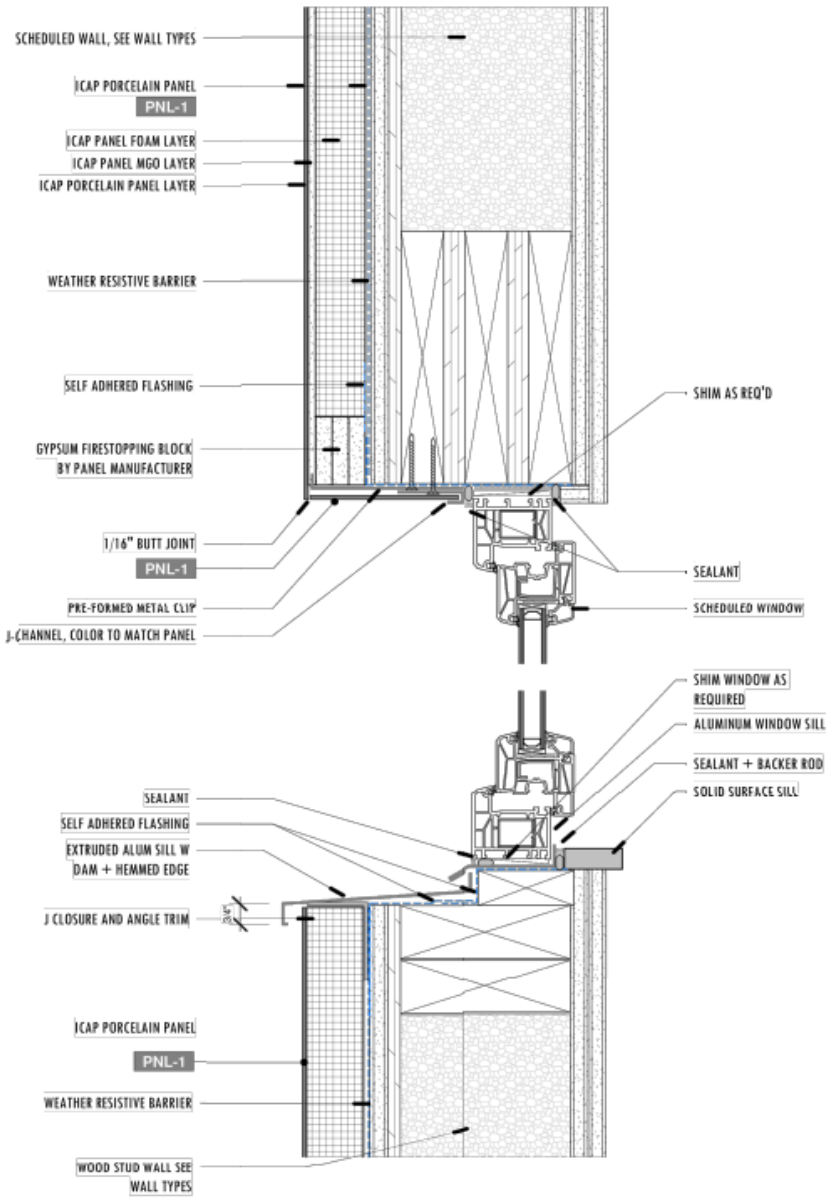
Install porcelain panels first cut to fit the opening as shown. Allow space for the "Sill" and caulking details between the window and porcelain return. The "cut-away" view shows the location of the porcelain return back to the wall.

Step # 3

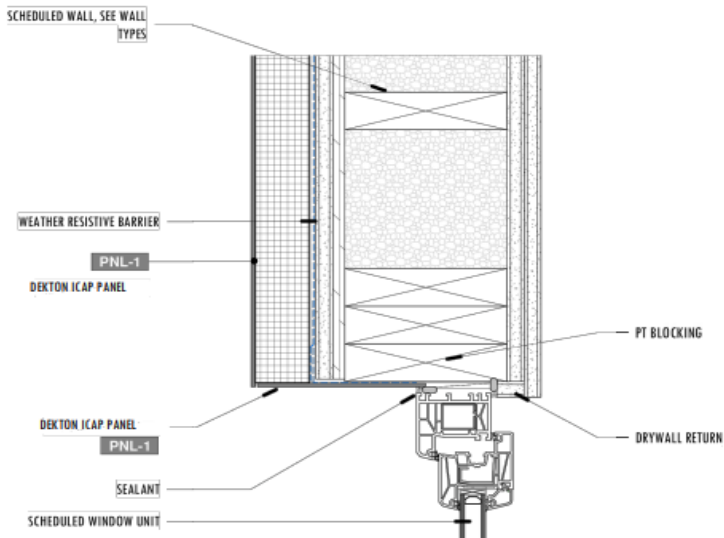


Install Porcelain Panels cut to fit the opening as shown. Allow space below the opening for the "Sill". Install the porcelain opening returns as shown in illustration #3 using Dow 1199 or 790 silicone adhesive.

Typical Porcelain Returns on Recessed Window



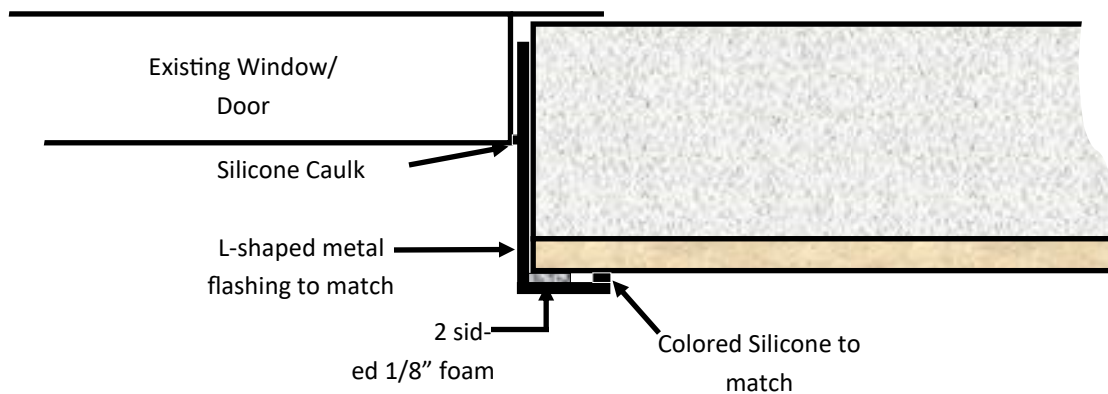
OPTIONAL UPPER WINDOW RETURN



Optional Porcelain Return on Butt End or Window Termination

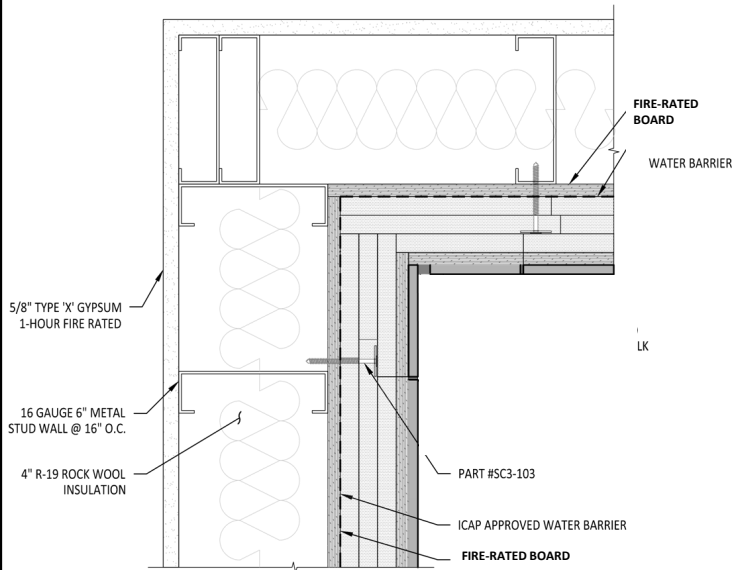


Window Trim for Installation after siding is installed

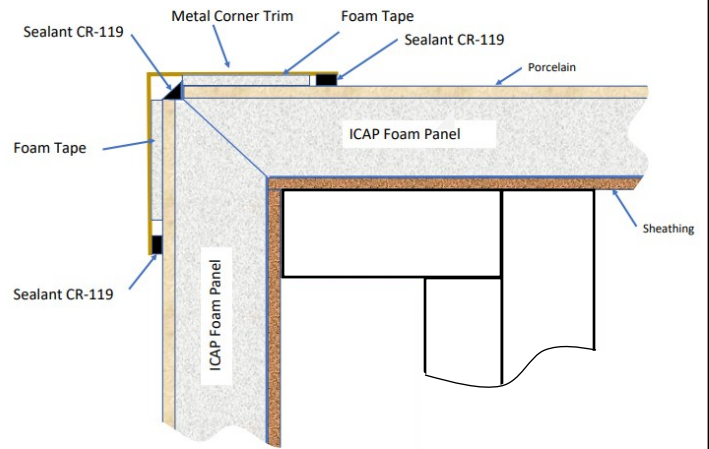


Note: Traditional Metal Flashing required above the or window/door

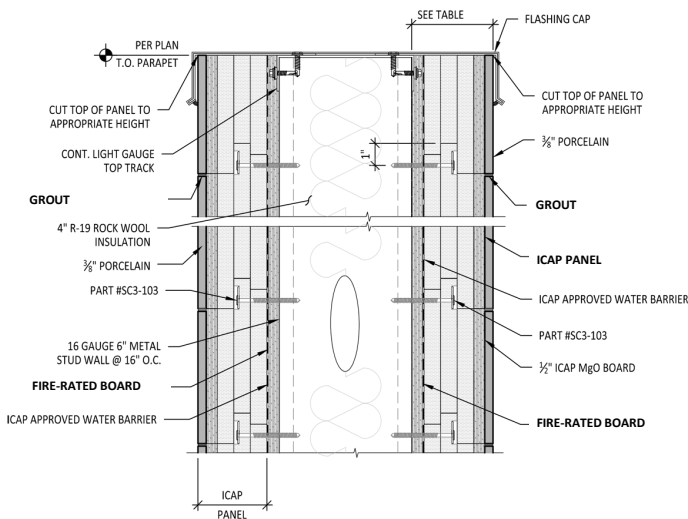
Inside Corner



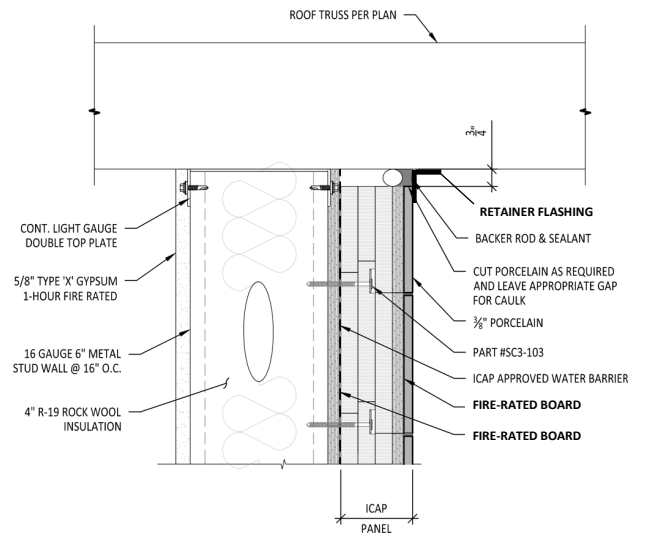
Outside Corner



Parapet Cap



ICAP to Soffit Overhang



R-12 .25 INSULATION TABLE

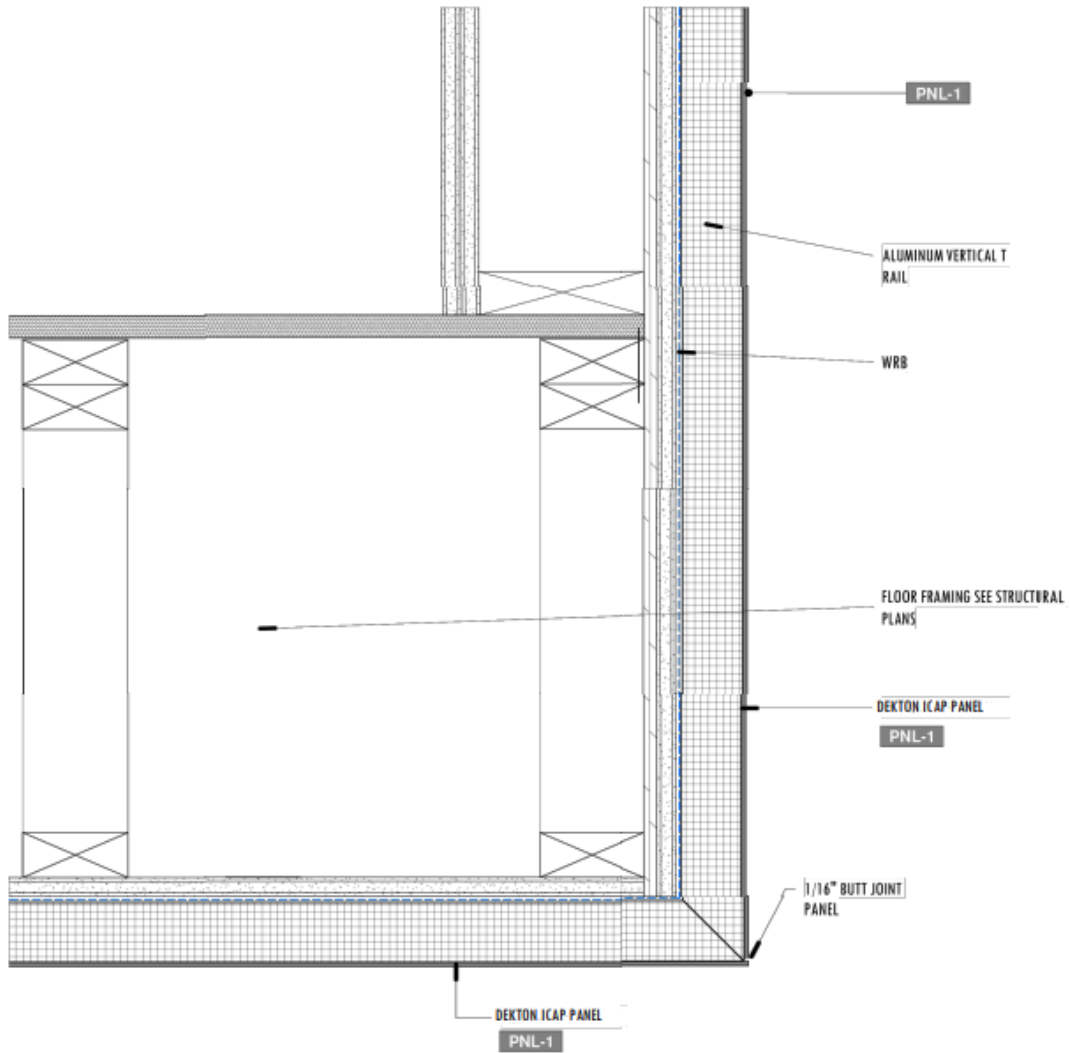
<u>ICAP PANEL MATERIAL</u>	<u>TOTAL PANEL INCHES</u>	<u>MILLIMETERS</u>	<u>PANEL R-VALUE</u>
EPS FOAM	2.00"	/	R-9.70
1/2" Fire-board	.500"	12.7	R-1.0
BONDING ADHESIVE	.0625"	1.5875	/
PORCELAIN	.375"	9.525	R-.34
TOTAL	3.1875"	80.9625	R-11.04

NOTE:

19

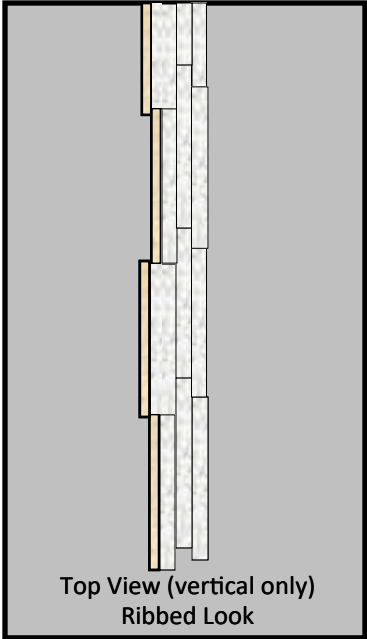
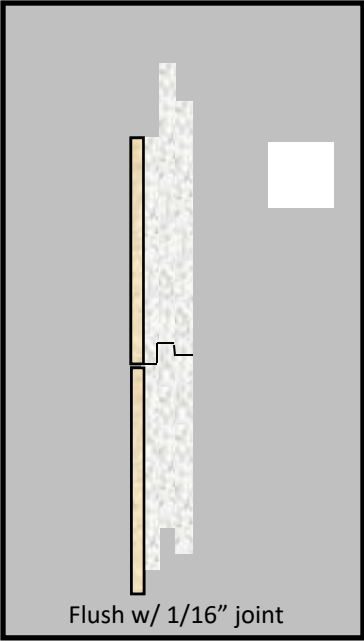
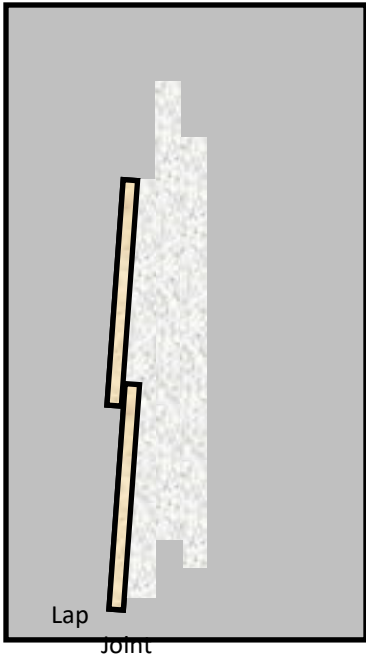
60 PSI - HIGH DENSITY EPS (ASTM 578 TYPE XV EPS) w/ AN R-VALUE OF 4.85 PER INCH. PORCELAIN : R-.34 VALUE /INCH

Typical Soffits with Ceiling Return



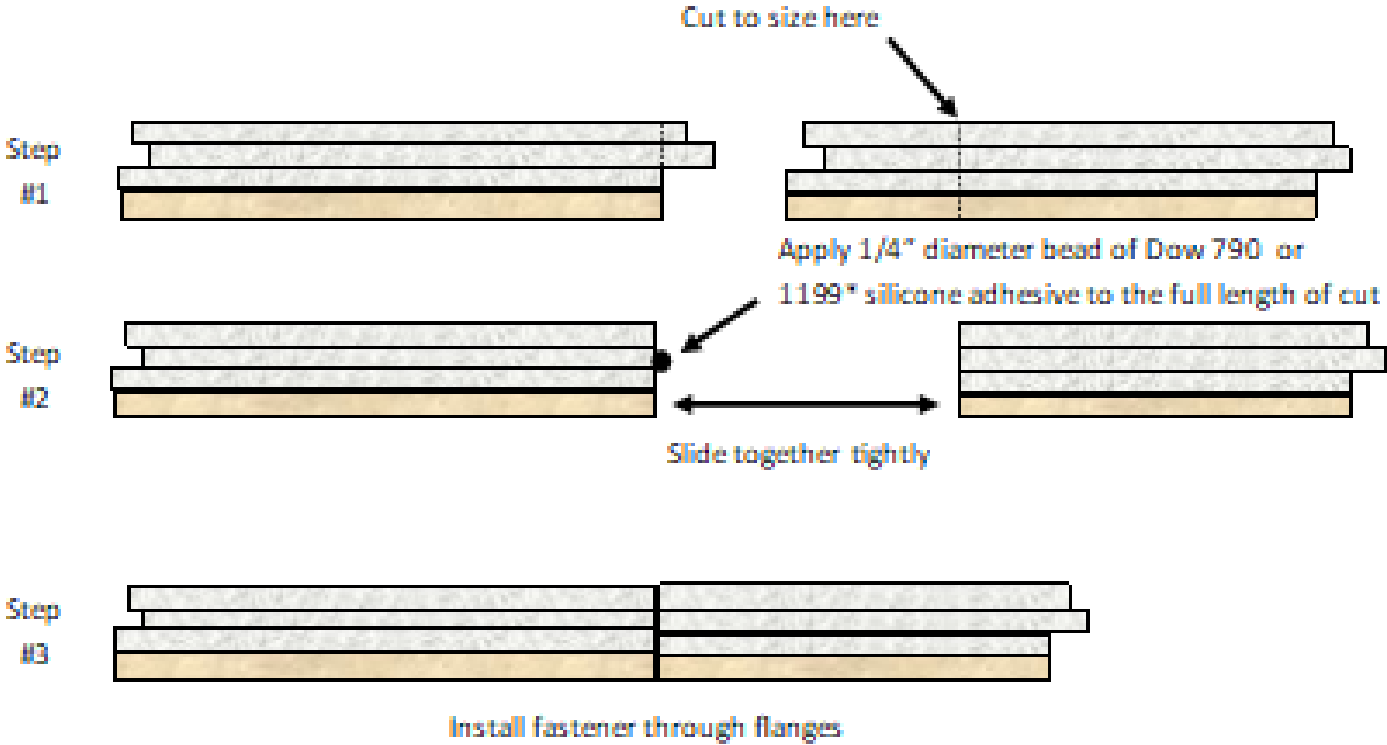
4 Soffit Section Detail @ Porcelain Panel Typical - NV2
NOT TO SCALE

ICAP Panel Configurations



Butt Splice (Used to adjust panels to wall length)

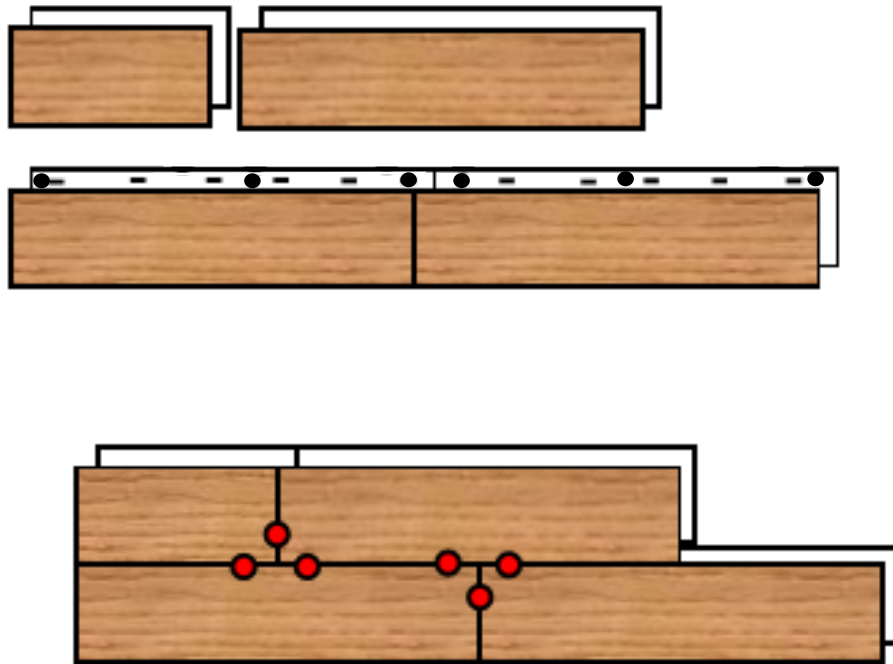
Top View



*1199 supplied by CastleRock

Installing Flush Porcelain Siding on uneven walls

Minimizing Lippage with Flush Panels



Many walls are even or only have uneven spots in them. When you encounter one of these areas, "Lippage" tools and adhesive easily solves the situation.

1. Install lower row of panels with fasteners first.
2. Apply a dime sized dollop of silicone adhesive to the top of the tongue.
3. At juncture locations as shown, install the "Lippage tools in the manner shown in illustrations 1-4. Allow the tools to remain in place for at least 48 hours to allow the adhesive to cure.
4. The Lippage devices are very inexpensive and reusable. Only use the wrench tool if absolutely necessary. Be careful not to overtighten.



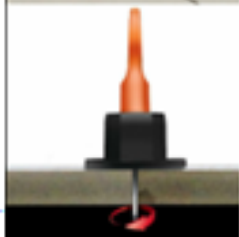
- 1 Paving the first tile, leave more than 1.5mm/0.06in. Close to the tiles.



- 2 Insert T-shaped needle along the gap in the tile. Then 90 degree rotation, T-shaped needle stuck at the bottom of the two tiles.



- 3 Adjust the caps with your hand/special wrench until the two tiles are on the same level.



- 4 Allow the Lippage devices to remain in place for at least 48 hours for the adhesive to cure. To remove, rotate the caps in the reverse direction to release tension, then twist the orange handle 90 degrees to remove the T-needle and device.

Interlocking Tongue & Groove

Fast, Easy, Economical mortar-less installation panels staple or screw to the wall!
(Optional Rainscreen)



Light Weight R-10 to R-20
Porcelain Panels



Screw/washer or Wide Crown Staples
through the foam attachment

Vertical Installation Instructions

1. Install the starter metal making sure it is level and straight.
2. Install the window/door/protrusion trim around these locations as shown on page 12.
3. Begin installing the vertical panels at the side or corner of the wall space from right to left (horizontal panels install left to right).
4. Secure the panels to the wall with the fasteners and at the spacing shown on page 7. Stack the next panel on top keeping them aligned, straight and vertical. Continue to the top of desired height and cut the last panel to fit.
5. Use "leveling tools" as shown on page 19. Notice the sealant dallops on the tongue before interlocking. Allow at least 48 hours for the adhesive (Dow 1199 or 790) to cure before removing the leveling tools.
6. Begin the 2nd vertical row by cutting the panel to the desired stagger of the joints for the best visual appearance or as specified in the plans.
7. Repeat the process until you reach a wall penetration or protrusion such as a door/window, etc. Cut the panel horizontally at the bottom of the window. Then, cut the side section to the height of the window/door, etc. (be sure to allow for the backer rod & sealant) . Use the "Butt Splice method shown in this manual on page 18.
8. Cut panels to fit above the window/door, protrusion remembering to align the horizontal joints to maintain the pattern.
9. Select a corner termination from the choices on page 14 &15.
10. Inside corners and parapets are shown on page 16.
11. Terminate at the top of the wall or soffit with flashings or as shown on page 16 & 17.

For any special installation situations requiring assistance, please reach out to ICAP/CastleRock at 208-859-4200 or les@castlerockx.com.

Cutting CastleRock Insulated Porcelain Panels

Below are some common brands of saws used to cut the CastleRock Panels. See instructions on the following page.



Super Thin Diamond Ceramic Saw Blade Porcelain Cutting Blade for Cutting Ceramic Or Porcelain Tile

Visit the GoYonder Store

★★★★☆ 1,557 ratings | 18 answered questions

Best Seller

\$11.74

Get Fast, Free Shipping with Amazon Prime & FREE Returns

Clip Save 5% with coupon. Terms

Get \$50 off instantly. Pay \$0.00 \$11.74 upon approval for the Amazon Rewards Visa Card. No annual fee.

Size: 5-Inch

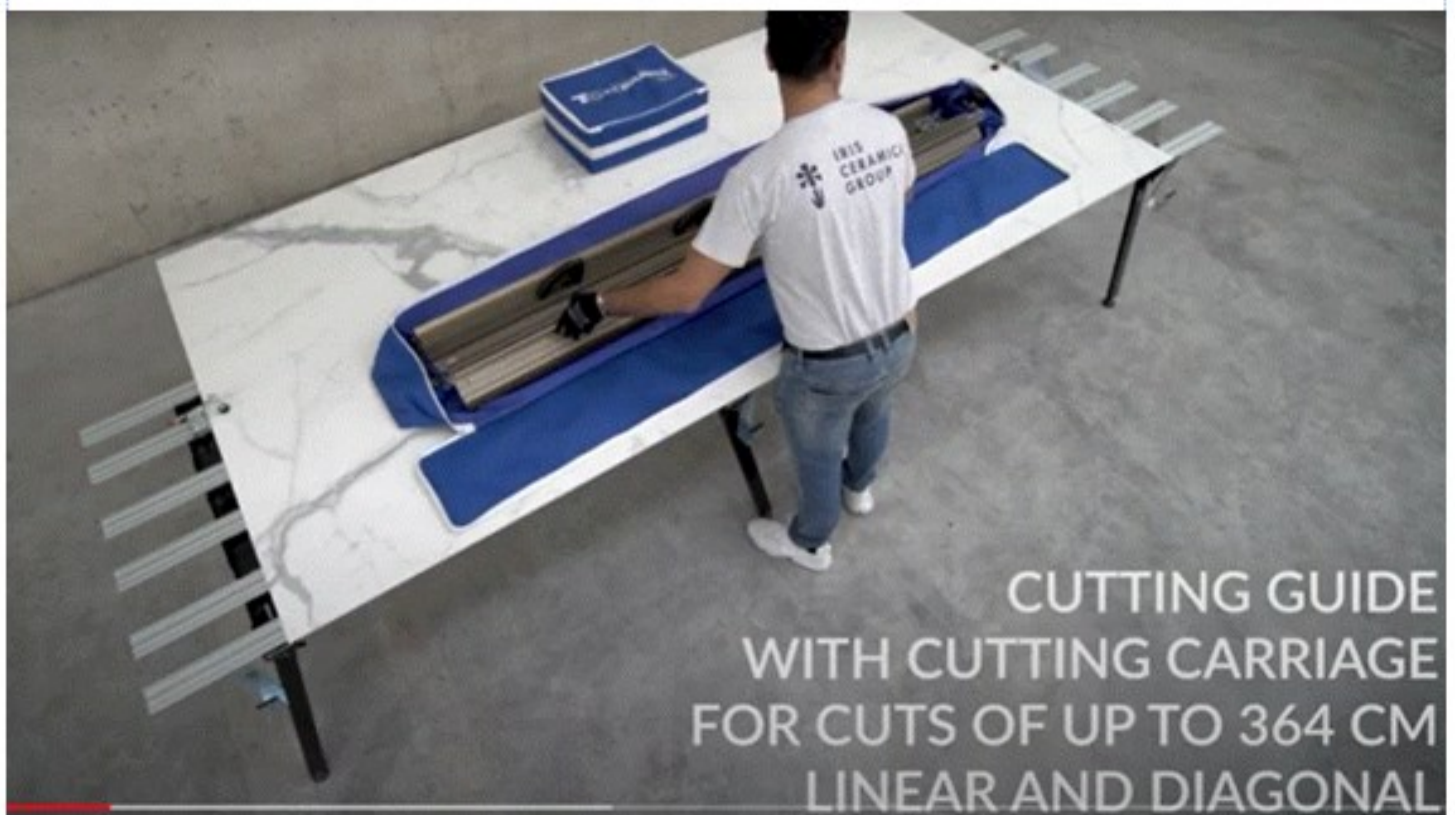


Oscillating Tool for cutting foam and removing adhesive from the back of tile.

How to cut CastleRock Insulated Porcelain Panels

1. Place the panel with the porcelain upwards and the foam side downward on a table or saw horse assembly.
2. Set up a saw guide and clamp it to the panel for a straight cut.
3. If you are using water on the saw blade as you cut, only cut about 1/2" into the foam.
4. Once you cut the porcelain, use the hand saw shown on the previous page to cut through the foam.
5. If you are dry cutting, you can cut all the way through the foam panel in one motion.

Below is a typical cutting table with slats to allow the saw blade to cut in between without cutting the table.



Click the following link to go to your YouTube videos:

[Large Format Manipulation: Slab System - YouTube](#)

ICAP-USA

Porcelain Cladding Maintenance Instructions

ICAP Porcelain Cladding can be installed in numerous design possibilities and a variety of looks. The Porcelain is easily cleaned due to the nature of the porcelain and its impervious surface. The grout joints are more vulnerable and should be treated carefully based on the type or grout :

Routine Porcelain Tile Care

Regular, basic cleaning with warm water and mild soap is sufficient to keep porcelain cladding looking good. You can also use gentle, everyday multipurpose spray cleaner to remove hard water deposits and mildew. Do not use cleaning products that contain acids or ammonia (and other harsh chemicals) as these can damage grout and glazed surfaces of the tile. Cladding can be spray washed at normal residential water pressure levels or with low pressure washers. Do not hold nozzle closer than 24 inches from the tile or grout to avoid damage of force water between joints.

Grout Care

100% Silicone Grout: This grouting method may be cleaned in the same manner as routine porcelain care described above. Be careful not to force water in the grout seams or damage the silicone.

Cementitious Grouts: This type of grout should not be cleaned until it is completely dried and cured, then the grout should be treated with a silicone sealer. Grout, the material used to fill the spaces between tiles, is porous, and sealing it at this time will simplify maintenance in the future (Epoxy grouts and 100% silicones grouts do not require a sealer). We recommend you apply a sealer at least twice a year for maximum stain protection over cementitious grouts.

Heavy Duty Cleaning

Neglected or situations where extreme dirt, smog, mold, mildew or dust is common may require more intensive cleaning. Clean glazed wall tiles with a scouring powder or all-purpose cleaner applied to a non-metallic pad. Rinse and wipe dry. In extreme cases use a commercial tile cleaner, or apply a strong solution of an all-purpose, non oil-based cleaner or scouring powder paste. Let stand for five minutes, brush and scrub. Then rinse with clean water and wipe dry..

Purchasing Maintenance Products

Ceramic tile and Natural Stone cleaning products and sealants may be purchased at your local home center or floor covering store. Consult the manufacturer of the cleaner or sealant for usage instructions and more detailed information about how its spe-

DO NOT...

Use cleansers containing acid or bleach for routine maintenance.

Use wax cleaners, oil-based detergents or sealants to maintain your tile (sealants may be used on grout joints).

Use ammonia (it will discolor grout).

Use harsh cleaning aids like steel wool pads or scouring pads containing metal.

Use a cleaning agent that contains color

CastleRock™

Insulated Porcelain Cladding Limited Material Warranty

This Warranty is effective as of 06/10/2021 and supersedes all previous warranties

P.O. Box 1258 Meridian, ID 83680 Phone: (208) 895-8557 email: les@castlerockx.com

WHAT DOES THE LIMITED WARRANTY COVER?

InsulStone, Inc., DBA CASTLEROCK™ warrants to the original purchaser/consumer at the time the products are installed, to be free from defects in material and workmanship during manufacture for a period of ten years from the date of installation.

This warranty is limited to the terms and conditions, exclusions and limitations, requirements and legal rights stated in this Warranty. In the event of repair or replacement under the terms of this warranty, the original warranty shall be limited to replacement or repair of the defective product and will extend for the balance of the warranty period from the date of the original installation. The coverage offered by this Express Limited Materials Warranty to the original purchaser and may only be transferable to subsequent purchasers with the prior written approval of CASTLEROCK/INSULSTONE.

WHO IS COVERED AND HOW LONG DOES THE COVERAGE LAST?

Should a material defect occur within 10 years of the original purchase by the registered purchaser, the manufacturer will in its sole discretion, replace the defective product before it is installed, or, during the first 10 years, reimburse the party for losses up to no more than twice the manufacturers selling price of the defective portion of the Product. After the 10th year all warranty coverage shall cease, and the warranty coverage shall be terminated. The Manufacturer's replacement of the defective product or granting of a refund pursuant this Warranty shall be in its sole discretion and the sole exclusive remedy available to the covered party with respect to any defect. MANUFACTURER WILL NOT REFUND OR PAY ANY COSTS IN CONNECTION WITH LABOR OR ACCESSORY MATERIALS.

WHAT DOESN'T THIS WARRANTY COVER?

This warranty does not cover damage of any kind resulting from:

- Faulty or improper installation
- Labor for repair or replacement of warranted parts.
- Shipping costs for replacement parts.
- Movement, waving, buckling, or other distortions.
- Damage from impact or contact with foreign objects, chemicals, etc.
- Damage from failure to properly maintain the Product.
- Installation of the Product in direct contact with dissimilar materials or use of incompatible caulking, adhesives, fumes, vapors or coatings.
- Changes in the surface color resulting from exposure to the elements (i.e. soiling, staining or discoloring resulting from local conditions which InsulStone, Inc. has no control over.
- Settlement or shrinkage of the property or structure.
- Fire or heat from barbecues, heaters, vents, etc.
- Lightning, hurricane, tornado, windstorm, earthquake, hail, snow or ice accumulation, or other acts of God.
- Surface deterioration from air pollution, or seacoast environment.
- Abuse, misuse, vandalism, or abrasion.
- Product that has been painted, coated, colored, or altered.
- Chips, cracks that do not affect the performance of the Product are not covered under this warranty.
- Any other causes beyond InsulStone/CASTLEROCK/INSULSTONE's reasonable control.
- Substitution or use of specialty parts not listed in CASTLEROCK/INSULSTONE's standard parts and price list.

OTHER LIMITATIONS:

1. CASTLEROCK/INSULSTONE cladding is designed for use as exterior cladding installed in accordance with its published installation instructions and should not be used as roofing, floors, on ceilings, or in locations that require watertight protection.
2. INSULSTONE reserves the right to discontinue or change any design, color or texture, of any of our products at any time and without notice or liability. If, for any reason, you make a warranty claim and the product type originally installed is no longer available, we may substitute another product determined by us to be of comparable quality and price.
3. There are no warranties expressed, implied, or written that CASTLEROCK/INSULSTONE accepts responsibility for other than this Warranty.
4. CASTLEROCK/INSULSTONE IS NOT RESPONSIBLE FOR ANY CONSEQUENTIAL OR INCIDENTAL DAMAGES ARISING OUT OF ANY BREACH OF THIS EXPRESSED WARRANTY, OR ANY OTHER ORAL, WRITTEN, OR IMPLIED WARRANTY THAT MAY APPLY TO YOUR PURCHASE, AS IT RELATES TO OUR PRODUCTS.
5. THIS IS YOUR EXCLUSIVE WARRANTY AND IS IN LIEU OF ALL OTHER WARRANTIES, EXPRESSED OR IMPLIED, INCLUDING BUT NOT LIMITED TO IMPLIED WARRANTIES OF MERCHANTABILITY AND FITNESS.

This warranty gives you specific legal rights. You may also have other rights which vary from state to state. SOME STATES DO NOT ALLOW THE EXCLUSION OR LIMITATION OF INCIDENTAL OR CONSEQUENTIAL DAMAGES, SO THE ABOVE LIMITATION OR EXCLUSION MAY NOT APPLY TO YOU. FAILURE OF PART OF THIS WARRANTY TO COMPLY WITH LOCAL OR FEDERAL LAW DOES NOT VOID DOCUMENT IN ITS ENTIRETY. This warranty shall be interpreted under the laws of the State of Idaho.

HOW DO I REGISTER THIS WARRANTY?

One application per property location where CASTLEROCK/INSULSTONE cladding is installed must be completed and mailed to CASTLEROCK/INSULSTONE, P.O. Box 1258 Meridian, ID 83680 within 30 days after the original installation has been completed. The notice should include the following:

- (1) Name of owner.
- (2) Address of property or location of the installation
- (3) Date of purchase (4) Proof of purchase

HOW DO YOU SUBMIT A WARRANTY CLAIM?

You must submit a claim in writing with us within the warranty period and within a reasonable period of time after the defect is discovered. To initiate the claim, please go to www.CastleRockx.com, contact us or email us at les@castlerockx.com, or by mail at: CASTLEROCK/INSULSTONE, PO Box 1258, Meridian, ID 83680. Phone#: 208.895.8557 ANY REPAIR OF THE PRODUCTS UNDERTAKEN WITHOUT PRIOR WRITTEN AUTHORIZATION FROM CASTLEROCK/INSULSTONE PRIOR TO RECEIVING WRITTEN APPROVAL FROM INSULSTONE, INC. WILL VOID THIS WARRANTY.

This Warranty is effective as of 06/10/2021 and replaces all prior warranties.

Owner _____

Installation Address: _____

Name of installing Contractor: _____ Date Installed: _____

Date of Completion: _____

Phone # _____ Owner Signature _____

Return a copy of this Limited Materials Warranty to CASTLEROCK/INSULSTONE PO Box 1258 Meridian,

CastleRock/ICAP™

10 YEAR EXPRESS LIMITED WARRANTY

WHAT DOES THE LIMITED WARRANTY COVER?

InsulStone, Inc., DBA ICAP-USA™ warrants to the original purchaser/consumer at the time the products are installed, to be free from defects in material and workmanship in the course of manufacture.

This warranty is limited to the terms and conditions, exclusions and limitations, requirements and legal rights stated in this Warranty. In the event of repair or replacement under the terms of this warranty, the original warranty shall be limited to replacement or repair of the defective product and will extend for the balance of the warranty period from the date of the original installation. The coverage offered by this Express Limited Materials Warranty to the original purchaser and may only be transferable to subsequent purchasers with the prior written approval of ICAPUSA.

WHO IS COVERED AND HOW LONG DOES THE COVERAGE LAST?

Should a material defect occur within 5 years of the original purchase by the registered purchaser, the manufacturer will in its sole discretion, replace the defective product before it is installed, or, during the first 5 years, reimburse the party for losses up to no more than twice the manufacturer's selling price of the defective portion of the Product. During the 6th through 25th year, the warranty coverage shall be reduced by 5% per year such that after the 25th year all warranty coverage shall cease and the warranty coverage shall be terminated. The

Manufacturer's replacement of the defective product or granting of a refund pursuant this Warranty shall be in its sole discretion and the sole exclusive remedy available to the covered party with respect to any defect. MANUFACTURER WILL NOT REFUND OR PAY ANY COSTS IN CONNECTION WITH LABOR OR ACCESSORY MATERIALS.

WHAT DOESN'T THIS WARRANTY COVER?

This warranty does not cover damage of any kind resulting from: Faulty or improper installation

- Any and all labor for repair or replacement of warranted parts.
- Shipping costs for replacement parts.
- Movement, waving, buckling, or other distortions.
- Damage from impact or contact with foreign objects, chemicals, etc.
- Damage from failure to properly maintain the Product.
- Installation of the Product in direct contact with dissimilar materials or use of incompatible caulking, adhesives, fumes, vapors or coatings.
- Changes in the surface color resulting from exposure to the elements (i.e. soiling, staining or discoloring resulting from local conditions which InsulStone, Inc. has no control over.
- Settlement or shrinkage of the property or structure.
- Fire or heat from barbecues, heaters, vents, etc.
- Lightning, hurricane, tornado, windstorm, earthquake, hail, snow or ice accumulation, or other acts of God.
- Surface deterioration from air pollution, or seacoast environment.
- Abuse, misuse, vandalism, or abrasion.
- Product that has been painted, coated, colored or altered.
- Chips, cracks that do not affect the performance of the Product are not covered under this warranty.
- Any other causes beyond InsulStone/ICAP-USA's reasonable control.
- Substitution or use of specialty parts not listed in ICAP-USA's standard parts and price list.

OTHER LIMITATIONS:

ICAP-USA cladding is designed for use as exterior cladding installed in accordance with its published installation instructions and should not be used as roofing, floors, on ceilings, or in locations that require water tight protection.

We reserve the right to discontinue or change any design, color or texture, of any of our products at any time and without notice or liability. If, for any reason, you make a warranty claim and the product type originally installed is no longer available, we may substitute another product determined by us to be of comparable quality and price.

There are no warranties expressed, implied or written that ICAP-USA accepts responsibility for other than this Warranty.

4. ICAP-USA IS NOT RESPONSIBLE FOR ANY CONSEQUENTIAL OR INCIDENTAL DAMAGES ARISING OUT OF ANY BREACH OF THIS

EXPRESSED WARRANTY, OR ANY OTHER ORAL, WRITTEN OR IMPLIED WARRANTY THAT MAY APPLY TO YOUR PURCHASE, AS IT RELATES TO OUR PRODUCTS.

5. THIS IS YOUR EXCLUSIVE WARRANTY AND IS IN LIEU OF ALL

OTHER WARRANTIES, EXPRESSED OR IMPLIED, INCLUDING BUT NOT LIMITED TO IMPLIED WARRANTIES OF MERCHANTABILITY AND FITNESS.

This warranty gives you specific legal rights. You may also have other rights which vary from state to state. SOME STATES DO NOT ALLOW THE EXCLUSION OR LIMITATION OF INCIDENTAL OR CONSEQUENTIAL DAMAGES, SO THE ABOVE LIMITATION OR EXCLUSION MAY NOT

APPLY TO YOU. FAILURE OF PART OF THIS WARRANTY TO COMPLY WITH LOCAL OR FEDERAL LAW DOES NOT VOID DOCUMENT IN ITS ENTIRETY. This warranty shall be interpreted under the laws of the State of Idaho.

HOW DO I REGISTER THIS WARRANTY?

One application per property location where ICAP-USA/InsulStone, Inc. cladding is installed must be completed and mailed to ICAP-USA/InsulStone, Inc. P.O. Box 1258 Meridian, ID 83680 within 30 days after the original installation has been completed. The notice should include the following: (1) Name of owner

(2) Address of property or location of the installation (3) Date of purchase (4)

Proof of purchase

HOW DO YOU SUBMIT A WARRANTY CLAIM?

You must submit a claim in writing with us within the warranty period and within a reasonable period of time after the defect is discovered. To initiate the claim, please go to www.icap-usa.com, contact us at sales.icap@gmail.com or by mail at:

ICAP-USA/InsulStone, Inc., PO Box 1258, Meridian, ID 83680. Phone#: 208.895.8557

ANY REPAIR OF THE PRODUCTS UNDERTAKEN WITHOUT PRIOR WRITTEN AUTHORIZATION FROM ICAP-USA/INSULSTONE, INC. PRIOR TO RECEIVING WRITTEN APPROVAL FROM INSULSTONE, INC. WILL VOID THIS WARRANTY.

This Warranty is effective as of 09/01/2016 and replaces all prior warranties.

Owner _____

Installation Address: _____

Name of installing Contractor: _____

Date Installed: _____

Date of Completion: _____

Phone # _____

Owner Signature _____

Return a copy of this Limited Materials Warranty to CastleRock/ICAP-USA PO Box 1258 Meridian, ID 83680