

# CastleRock™

## ICAP Series

### NFPA 285 Porcelain Cladding

#### R-8 & R-12 Installation Guide

ICAP-USA™ Cladding – Patent #: USA #8,176,701B2, Canada 2,588,294

Test reports and certifications are listed below:

Intertek/Warnock Hersey Test Reports W/N 20269

Intertek test reports available at [www.spec-direct.com](http://www.spec-direct.com)

CastleRock website [www.castlerockx.com](http://www.castlerockx.com)

Installation Guides available at [www.castlerockx.com](http://www.castlerockx.com)

Or by contacting us at [info@castlerockx.com](mailto:info@castlerockx.com)

Testing conducted in accordance with the following:

Evaluation Guide: ICC EG 315

**ASTM E330(2002):** “Standard Test Method for Structural Performance for Exterior Windows, Doors, Skylights and Curtain Walls by Static Air Pressure Difference”

**ASTM E84(2009) -08a** “Standard Test Method for Surface Burning Characteristics of Building Materials”

**CAN/ULC S102 (2007)** “Standard Test Method for Surface Burning Characteristics of Building Materials”

**ASTM C578** “Standard Test Methods for EPS Foam”

**NFPA 285:** Standard Fire Test Method for Evaluation of Fire Propagation Characteristics of Exterior Non-Load-Bearing Wall Assemblies Containing Combustible Components

**ANSI A137.1-2012** American National Standard Specifications for Ceramic Tile - Version 2013.1

**ASTM C373** Standard Test Methods for Determination of Water Absorption and Associated Properties by Vacuum Method for Pressed Ceramic Tiles and Glass Tiles and Boil Method for Extruded Ceramic Tiles and Non-tile Fired Ceramic Whiteware Products

#### Summary

ASTM E84, CAN/ULC S102 (2007)

Flame Spread Rating: 0

Smoke Generation Rating: 0

## Workmanship

This Installation Guide assumes the construction personnel have knowledge of the materials described and their proper methods of installation. The manufacturer recommends certified installers be used to install ICAP products. Installer certification is available through the ICAP-USA "Factory Certified Installer" program. Contact us at 208-895-8557 for details.

## Preparation

Prior to commencing activity related to the scope of this Guide, review all adjacent products and other subcontractor work that precedes the installation of ICAP-USA cladding ensure proper workmanship is reflected and that there are no recognizable errors or deficiencies.

## Building Code Requirements

Building code requirements vary from area to area. Check with local authorities for building code requirements for your area and application. Carefully read all sections of this guide and follow the manufacturer's Installation Instructions before proceeding with your ICAP application. In the event the local building codes conflict with other statements made in this document, contact the manufacturer for additional guidance.

## Material Requirements:

## Flashing

All flashing and flashing accessories must be corrosion resistant materials and integrated with the WRB materials or flashings recommended by the air/water resistant barrier manufacturer for use with their products. Flashing must be installed at all through the wall penetrations and at terminations of ICAP panel system, around doors, windows and other protrusions in accordance with local building codes.

## Weep Screed

Some jurisdictions require weep screeds or termite barriers. These must be made of corrosion resistant metal a minimum of .019 inches or 26 gage thickness; or plastic weep screed a minimum of 0.050" with a minimum vertical attachment flange of 3 1/2" wide.

## Walls and Wall Systems

ICAP-USA ICAP Substrate Panels are designed to attach to the following wall substrates with manufacturer approved fasteners. See table on the next page to determine the appropriate fastener for your application.

## Recommended Clearances:

- ICAP Substrate Panels individually attach to the wall or studs and do not require a brick ledge support like masonry products.
- Check with your local building official for requirements above grade and concrete/paving in your area. (slope away from the structure in accordance with local building requirements)
- ICAP-USA™ is a cladding product and all components used in its manufacture are waterproof. Consult with your local building official regarding requirements in your area.

## Cautions:

- Do not subject ICAP-USA™ Claddings to frequent water contact such as sprinklers or direct spray. Place downspouts or drainage pipes so the water is not frequently contact the cladding.
- Do not subject ICAP-USA™ to contact with de-icing materials, salt, asphalt roofing material or its drainage, or other harsh chemicals. Prolonged exposure may damage the fascia or panel.
- Do not expose the EPS foam portion of the panel to extended periods of sunlight. All surfaces for EPS must be covered with fascia, flashing, other materials to protect it from UV exposure.

# ICAP Series

## Installation Guide

	<u>R-Value</u>	<u>Height Range</u>	<u>Length Range</u>
<b>Flat Panels</b>	7-12	5” - 24”	24” - 144”

**Note: Panels sizes are dictated by porcelain panel sizes. Check with ICAP for available sizes.**

<b><u>Tools Required</u></b>	
<b>Screw gun w/ adjustable torque chuck:</b>	
Torque Drives: T-21 & T-25	
Screws: See Table “A”	
<b>Staple Gun for wood sheathing: 15/16” crown X 2-1/2” Leg</b>	
<b>Hot Knife Foam cutter &amp; grooving blade</b>	
<b>Saws (Diamond Blade):</b>	
12” Masonry or Sliding Miter Saw w/ wet/dry diamond porcelain blade	
Circular Saw w/ wet/dry diamond porcelain blade	
4” Right Angle Grinder	
<b>Scaffolding</b>	
<b>Ladders</b>	
<b>Normal Carpentry and Construction Tools</b>	
<b>Safety Equipment</b>	

ICAP offers fasteners and clips for various materials, R-value cladding and uses. Please review the table below to select the correct

<b>NFPA</b>	<b>Substrate Application</b>	<b>ICAP Panel Fastener</b>	<b>Size</b>	<b>Spacing</b>
ASTM E-84	Plywood/OSB	Staples	ICAP Part# STA-102 1" crown x 2-12 Leg	3" or less O.C.
ASTM E-84	Plywood/OSB	Screws & ICAP Washer: Washer: 1-1/4" x .060 plated fender washer Screw: #9x3" Zinc Plated or Stainless T-25 Drive, Coarse Auger Thread, Type 17 Point	ICAP Part# SCW-103	16" O.C. Max.
ASTM E-84	Wood Studs with Exterior Type X Fire Rated Board Complying with local Building Codes	ICAP Screws or washer and screw	Part# SCW-3	16" O.C. Max.
NFPA 285	Required on all NFPA 285 Exterior Fire Rated Board Complying with local Building Codes	ICAP Fascia Clip CL-103 & CL-104 to Screw to 1/2" MgO board: w/screw #9 x 3 in., Type 17 point, T-21, Flat Head, Full Thread Screw, Zinc Plated or Stainless	ICAP Clips Top Clip: CLP-T12 or B08 Bottom Clip: CLP-B12 or B08	Alternate top and bottom clips on 12" O.C. Max. 24" O.C. between like clips
NFPA 285	Exterior Fire Rated Board Complying with local Building Codes	NFPA 285 Clip & Screw	ICAP Part# SCW-3	16" O.C. Min.
NFPA 285	Metal Studs with 1/2" Exterior Fire Rated Board Complying with local Building Codes	ICAP Screw and washer Washer: 1-1/4" x .060 plated fender washer Screw: #9x3" Zinc Plated T-25 Drive, Coarse Auger Thread, Type 17 Point	ICAP Part# SCW-3	16" O.C. Max.
NFPA 285	<b>NFPA Fire Barrier Window Side Trim</b>	ICAP Screws	Part# SC3-103	12" or less O.C.
NFPA 285	<b>Fascia Clips</b>		Top Clip: CLP-T12 or T08 Bottom Clip: CLP-B12 or B08	16" or less O.C.
	Concrete	ICAP M-Screws or Ram-set	Part# SCW-M03	16" or less O.C.

# ICAP-USA

## Installation Guide For NFPA 285 Compliance (R-12 & R-7)

### Fascia Style : Porcelain

#### A). Interface with Other Work:

Coordinate with installation of substrate required for installation. If Electrical, Plumbing and other Mechanical penetrations are installed after the exterior siding panels are installed, provisions for watertight sealing of all penetrations must be addressed.

#### B). General: **Construct the wall in accordance with local building codes. In the absence of local building codes, install in accordance with the requirements of the IRC/IBC and the manufacturers installation instructions. Use a qualified installer. Wall preparation and requirements:**

**A.** These instruction's are for metal framed walls with a minimum of 22 gauge nominal 2" x 6" corrosion resistant steel studs located a maximum of 16" on center and framed in compliance with local building codes.

**B. Substrate Sheathing: Non-load bearing walls for NFPA 285 compliance:** The metal framed wall is required to be sheathed with minimum of a 1-hour fire-rated board or 1/2" MgO exterior wall board supplied by ICAP as described in Illustration "B" of this manual. See Illustration "Option A" for drainage plane instructions if required.

**C. A Liquid Applied Air/Weather Resistant Barrier is Required For NFPA 285 Compliance:** A Self-sealing, Air/Weather Resistant Barrier manufactured by the following manufacturers and listed for use with the CastleRock/ICAP NFPA 285 compliant system. The following manufacturers are recognized by **CastleRock/ICAP** and Intertek Laboratories for use with the ICAP system:

- **Tremco** brand identified as **EXOAIR 230** Air/weather barrier, flashing and components. <http://www.tremcosealants.com/products/exoair-230.aspx>
- **STO** brand identified as **Gold** air/weather barrier. <http://www.stocorp.com/air-moisture-barriers/>
- **Master Wall** brand identified as **Roller Shield RS** air/weather barrier. <http://masterwall.com/rollershields/>

These manufacturers and products are recognized and required as part of the **CastleRock/ICAP NFPA 285 compliant system**. Check with your local building official for weather resistant barrier requirements and codes in your area. For details regarding the installation of for each specific air/weather barrier system, see their instructions available on the websites as listed above.

#### C.). Flashings:

Install flashings in accordance with the air/weather barrier, window and roofing manufacturer's installation instructions, or in the absence of these instructions, install per section 703.8 of the 2009 International Residential Code (IRC) at the following locations:

- a). Top of all doors and windows. A metal flashing is required at the top of each window, door and protrusion to prevent water from entering the wall cavity.
- b). Flashings may be required at projecting lips or conversion to masonry or other sheathing, or an areas that may allow water to enter.

Check with your local building official for requirements in your area..

#### D). Installation of ICAP Interlocking Insulated Substrate Panels:

- a. **Inspect the wall to assure correct fit of substrates and framing. Studs: 16" or less on center with the 1-Hour min. Fire-rated sheathing or ICAP 1/2" MgO cladding as shown in this manual with the recognized air/weather resistant barrier listed above and as prescribed by the manufacturer and local building codes.**
- b. **Prior to installation** of the starter section, determine its desired location in regard to elevation and relationship with the foundation,. Panels may be trimmed to fit the fire barrier panels located at openings. Plan for termination at windows, doors, projections and upper terminations. See instructions in this manual for details of termination points.
- c. **Install the Starter Section (Part# SSS-048)** – Install the starter section at the bottom of area where the panels are to be installed in conformance with local building codes and overlap the starter metal a minimum of 1" over the foundation. If codes are not present, the manufacturer recommends a minimum of 6" above grade and 2" above pavement surfaces. Attach the starter section with corrosion resistant screws or nails to the sheathing or plate every 6 inches on center. Starter section must be straight & level.

E. WINDOW/DOORS/PROTRUSION TRIM

Note: Window trim components are required for NFPA 285 compliance. See Details 9-

11.

1. Install flashings around windows as required by local building codes.
2. Install Window/door on each side fire-barriers (TRM-R08 or TRM-R12) to fit around the flashing metal. Allow 1/2" between the flashing and fire barrier trim to allow for backer rod and sealant on each side of the window/door. See detail #13.
3. Install Standard Cladding panels up to 3-1/2" from the bottom of the window, convert to a row of MAG-930 panels a minimum of 3-1/2" below the window. The MAG-930 panels may be notched to fit around the window and fit to the Side Trim (TRM-S08 or TRM-S12 (R-12) as shown in detail #5.
4. Continue installing the bottom section of window trim 1/2 inch below the protruding flashing under the window. See detail #5.
5. Install backer rod and sealant on sides and top as illustrated in detail #7.

F. INSTALLING CLADDING PANELS

1. STARTER SECTIONS: Determine the location of the bottom panels and install the J-hook shaped "starter section" Part # SSS-048 at bottom of the wall and lap it a minimum of 1" (25.4 mm) over the foundation. Attach every 6" (152.4mm) to the plate or studs with appropriate fasteners. Note: ICAP panels will hang 3/4" below the bottom of the j-hook starter. Check local building codes for code requirements above grade and sidewalks, etc. In the absence of local codes, locate the panels 2-inches (50.8 mm) above sidewalks, pavement etc. and 4-inches (101.6 mm) above grade. See Detail #1.
2. Install metal window/door and outside corner flashings trims where required.
3. Begin installing standard panels from left to right until you cannot fit another panel between the bottom of the window and the top row of panels. The distance between the bottom of the window and top of the panel must be greater than 4". Install a row of MAG (CPW-990) panels under the window. This may require notching the panel to fit around and under the bottom of the window as necessary. Remember to leave 1/2" between the window and the flashing for backer rod and sealant.
4. Begin by installing standard panels from left to right maintaining the top of the panels level. When you reach a protrusion or opening such as a window/door, the last panel will require cutting for the correct length and to fit over the 4" fire barrier. Cut panel to the length for the porcelain to fit behind the metal flashing. Then, remove a 4" section of foam from the back of the panel to fit over the fire-barrier window/door trim. **Note:** The cut end of the porcelain should fit behind the flashing lip for the best appearance.
5. On the right-hand side of the protrusion/window/door, cut the left end off the panel and remove the foam in the same manner as you did on the left-hand side. Make sure the joints align above and below with the other rows of panels.
6. When you near the top of the window, begin using the CPW-990 MgO panels to fit around the top of the window and at least 4" above the window (notch if necessary). Remember to leave the 1/2" joint for backer rod and sealant. Then you may resume using the MAG panels, but install clips as shown in Detail #4. Install backer rod and sealant on sides, top and bottom of the windows and protrusions as shown in Detail #9.

## G. PANELS ABOVE THE WINDOW

In the area above the window, the width of the window and 96" above the window, the installation of clips and are required for NFPA 285 compliance.

1. Secure MAG panels above the window using clips as shown (a minimum of one (1) top and one (1) bottom are required).
2. Above the window and up 96" Install metal clips CL-103 (top clip) and CL-104(bottom clip) every 12" (60 9.6mm) minimum into 1/2" MGO board or metal studs This will stagger the up/down direction of the clips every 12".

See Detail #4.

Note: If the vertical height of a panel is more than 12" (305.1), locate metal clips CL-103 and CL-104 on the vertical tongue in an alternating pattern.

3. Continue installation of panels on the wall and fit to the window as required.

J. Inside Corners – Field cut to fit – See Detail #13.

## K. SOFFITS

1. Install panels until the top row will not fit under the soffit. Measure the distance between top of the panel and the soffit. Cut the panel (19.05mm) shorter than the desired space. Install the panel by inserting into the space between the uppermost panel and the soffit. The panel will slide down over the tongue of the panel below, leaving a 3/4" space between the top of the cut panel and the soffit. Use backer rod and sealant to seal watertight.
2. Install a 1-1/2 x 1-1/2" angle shaped flashing to the soffit that protrudes downward over the porcelain and presses it tightly to retain it the wall.

# Installation Instructions

2. Screw the panel to wall through the tongue section on the right-hand end of the panels as assembled. Install backer rod and sealant into the space between the top panel and soffit. [See detail #12](#)

## L. PARAPETS

1. Install panels up to the height of the parapet. The top row of cladding will need to be cut to the correct height to match the height of the parapet. Secure panels by screwing through the tongue flange where possible and then “toe nail” screw the top of the panel to the parapet with appropriate screws. When the metal cap is installed, it will secure the top panels in place. [See detail 11.](#)

2. Install the metal cap over the top and sides of the panels as required.

## M. GROUT JOINTS

Note: Have a qualified caulking/sealant person install the grout joints.

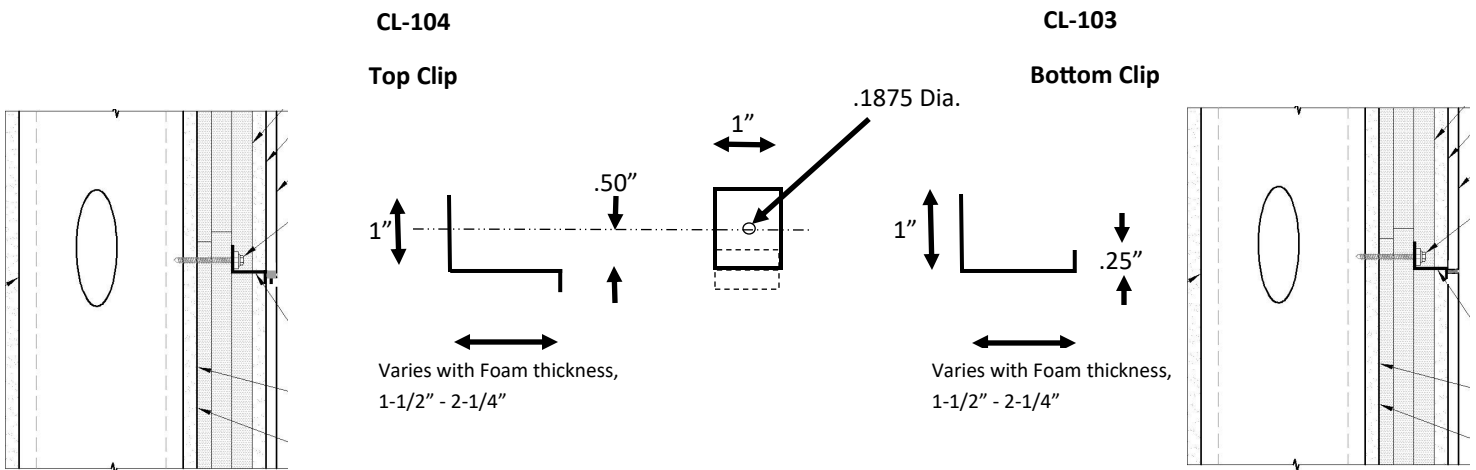
Note: Fill Grouting joints with a non-combustible rated grout. Caulking around windows/doors & protrusions require a high temperature silicone caulk (Dow 790 sealant for NFPA 285) or equivalent.

1. Make sure the surfaces are clean and dry.
2. Have a qualified person apply grout compound into joints between porcelain tiles. Clean porcelain appropriately. I.
3. Use backer rod and sealant to seal around doors/windows and protrusions.
4. Allow to dry 48 hours before allowing work to resume in the area or exposure to dust, dirt or water.

## Illustration: “B” (Clip Dimensions)

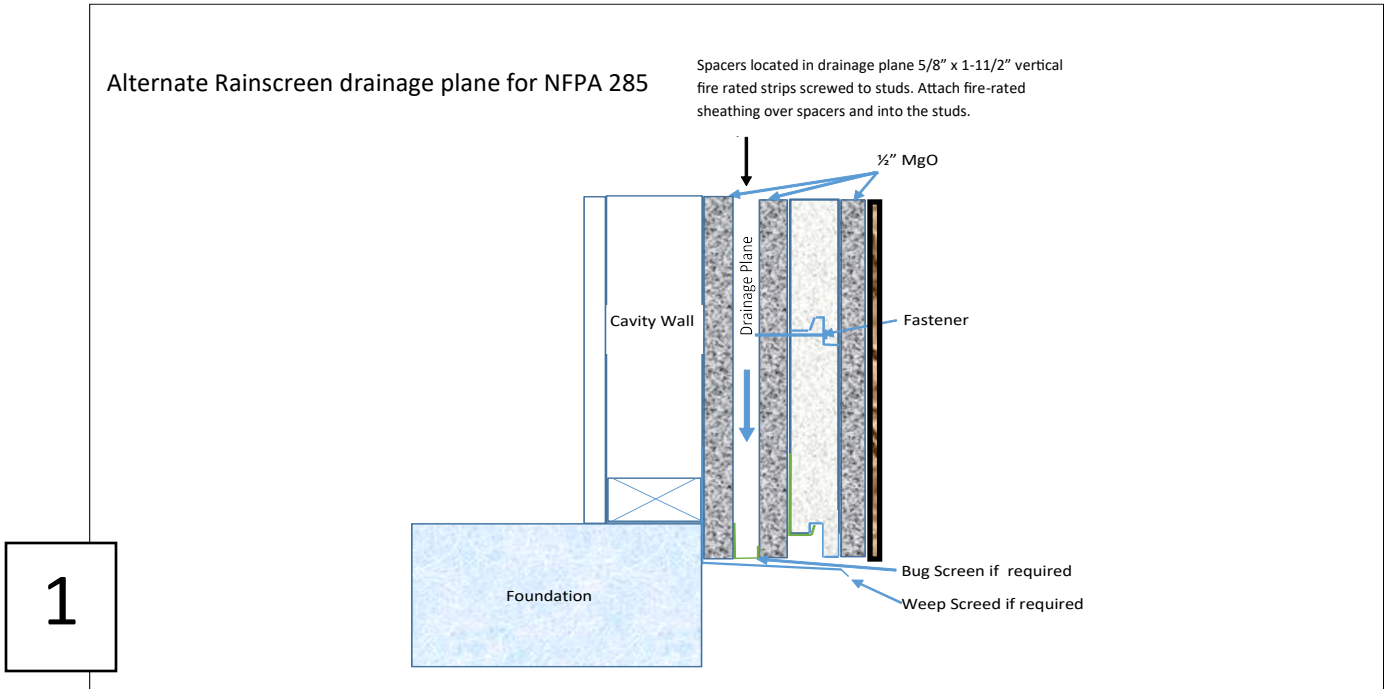
ICAP NFPA 285 Securement Clip  
Part#: CL-103 (Bottom) CL-104 Top  
Width: 1” min. Thickness: .050 min.

Metal Clip Screw: #9 x 3” min.  
Torque drive, 17 Tip





# Optional Drainage Wall Configuration—Illustration “Drainage Option”



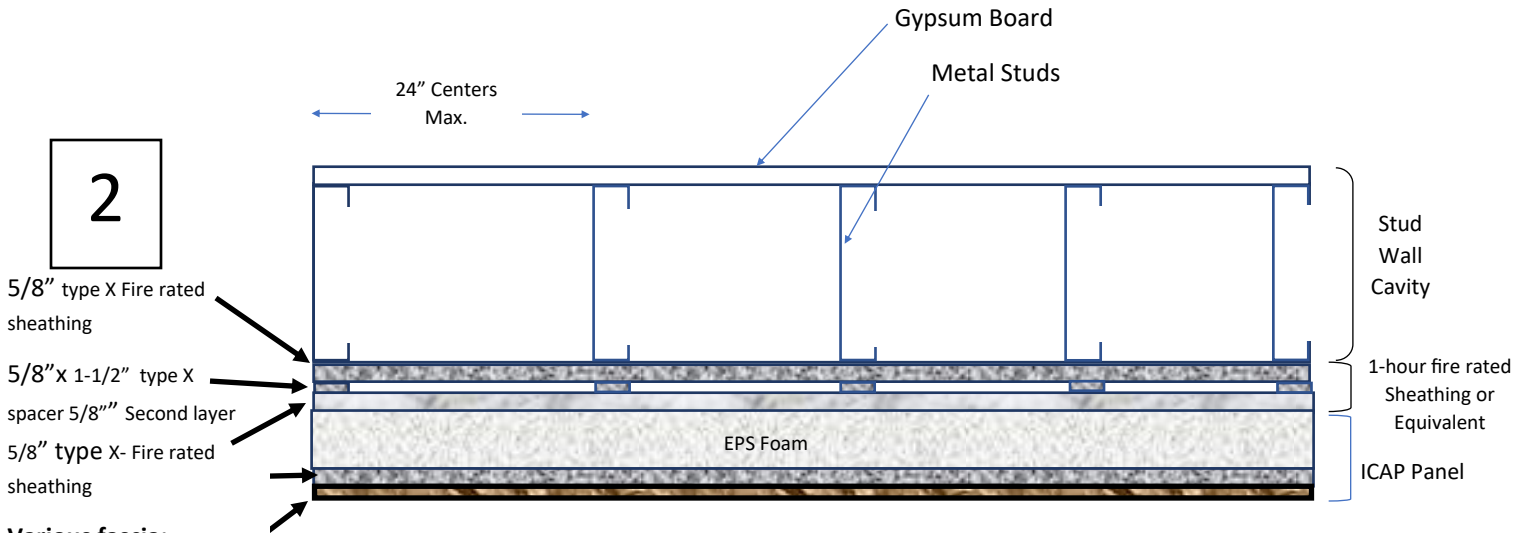
Air/Weather Barrier installs on Type X sheathing closest to the cavity wall.

## Optional Rain-screen Drainage Wall Construction

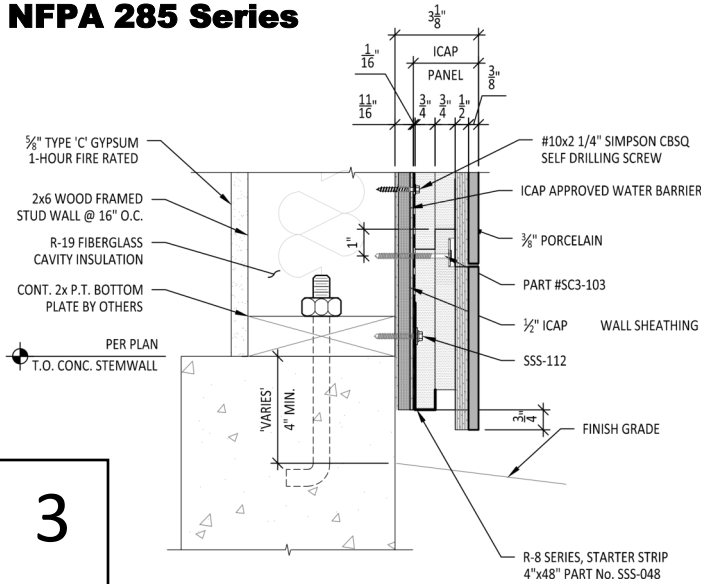
ICAP Substrate Cladding – Mfg. by CastleRock Building Products NFPA 285

Alternate Wall configuration with Rain Screen Drainage Plane

Top View:

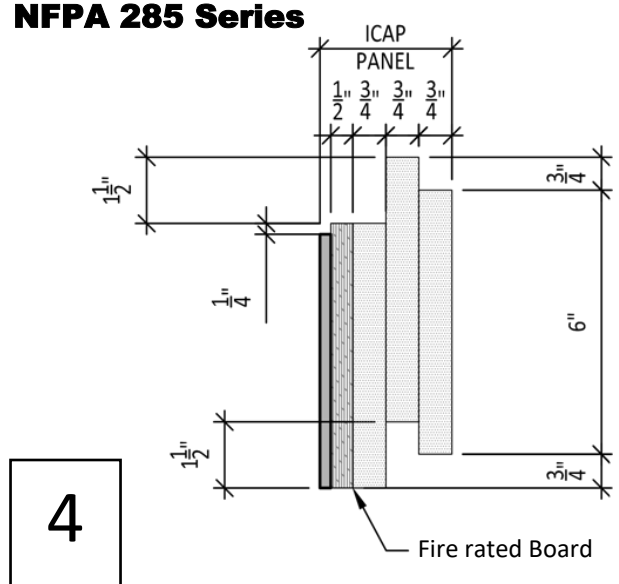


## Starter Section and R-8.59 Dimensions NFPA 285 Series



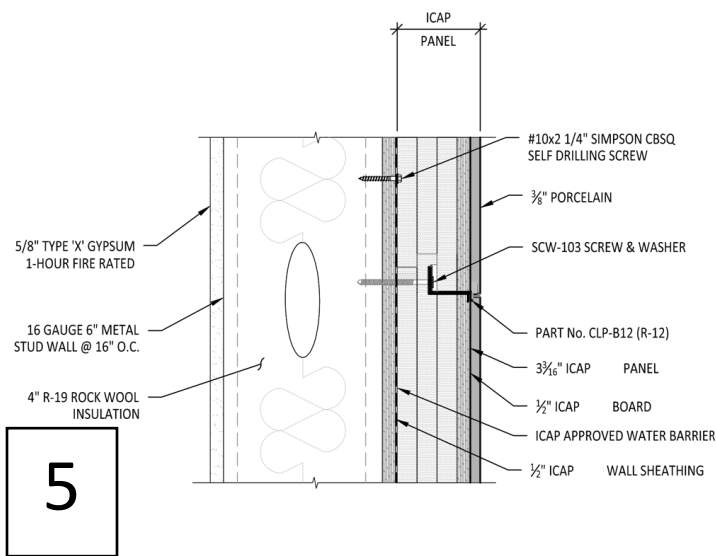
3

## R-12.25 Panel Dimensions NFPA 285 Series



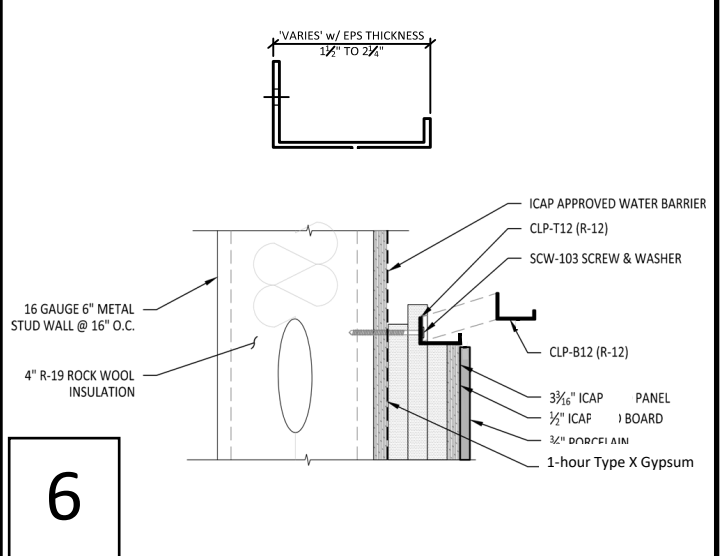
4

## R-12.25 / U-.0816 SERIES, TOP CLIP



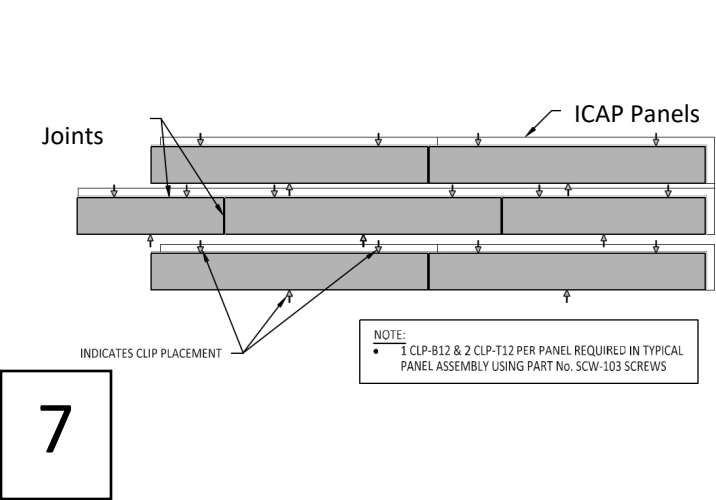
5

## R-12.25 / U-.0816 SERIES, BOTTOM CLIP



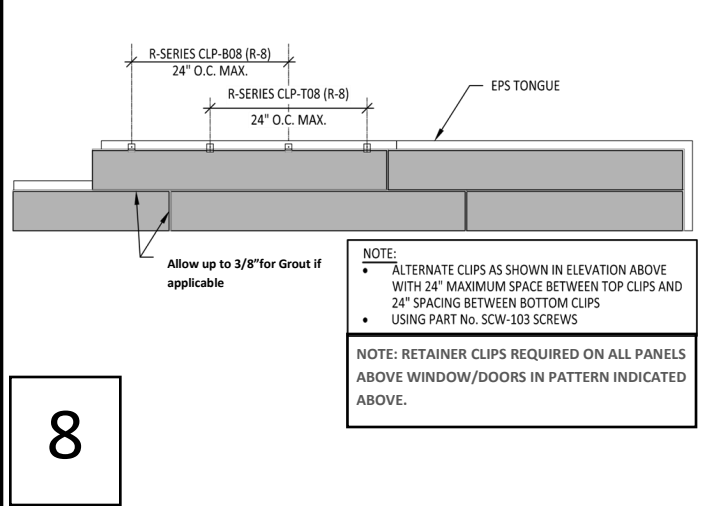
6

## Retainer Clip Locations Other Wall Areas

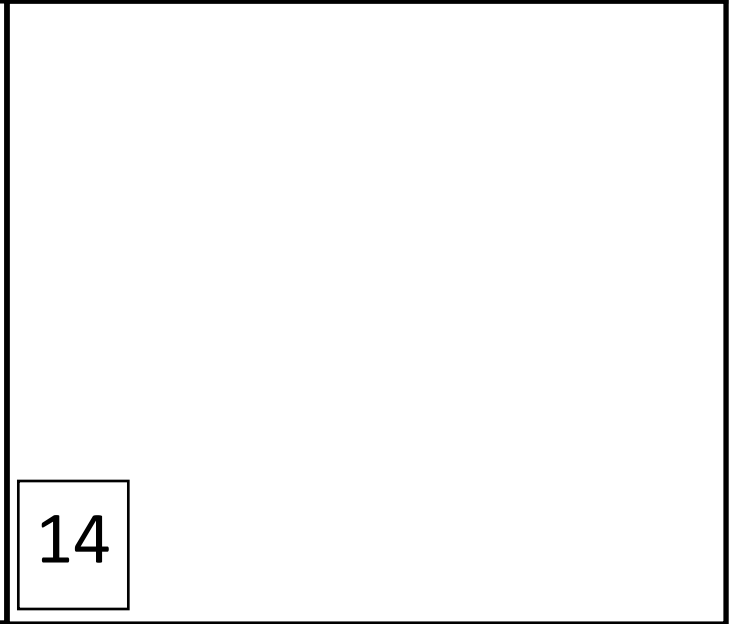
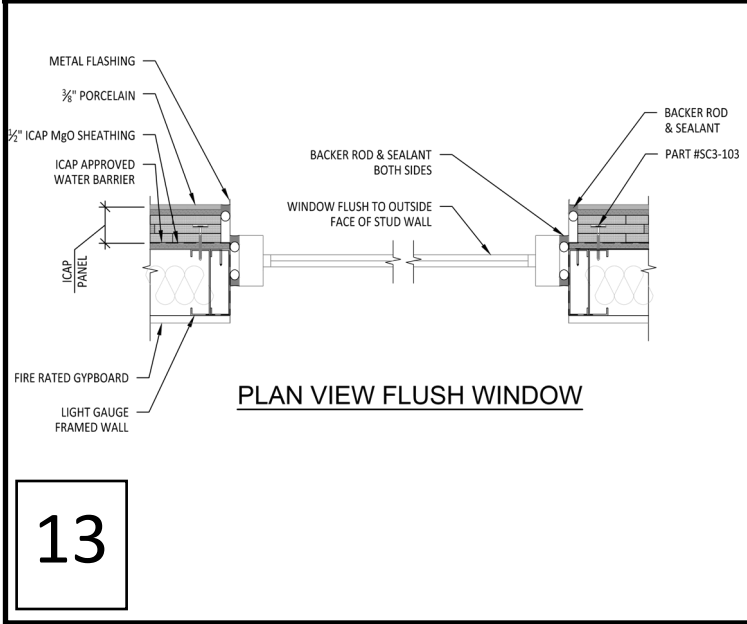
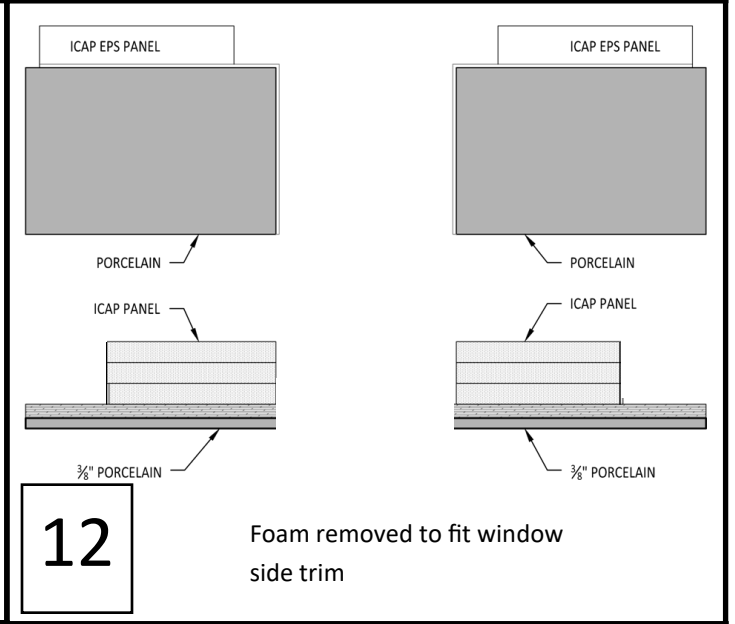
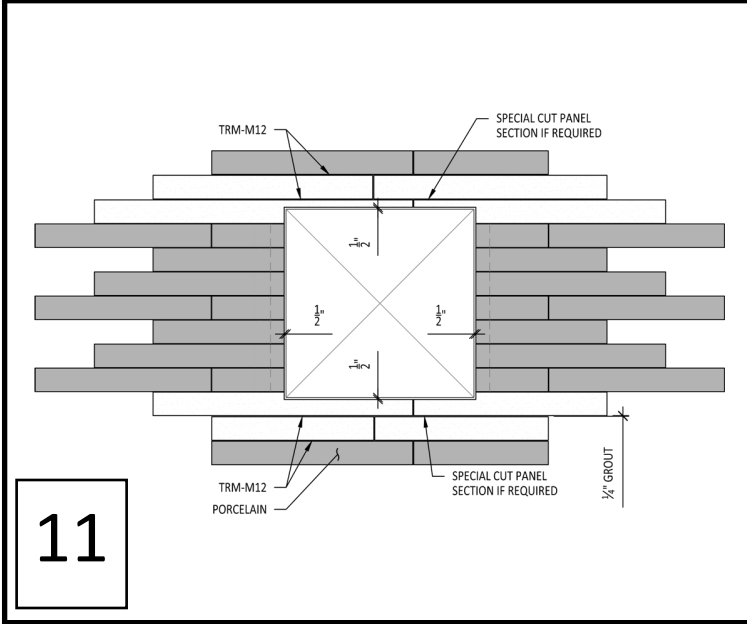
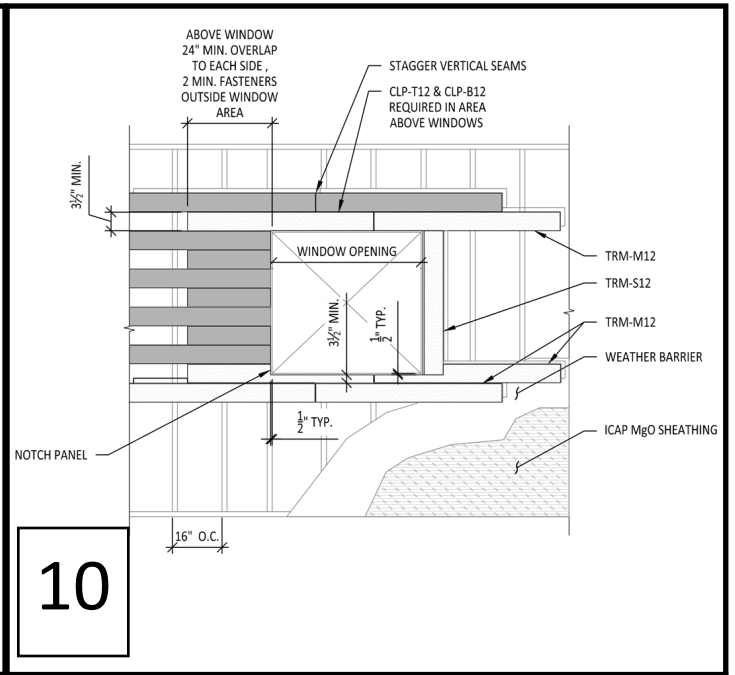
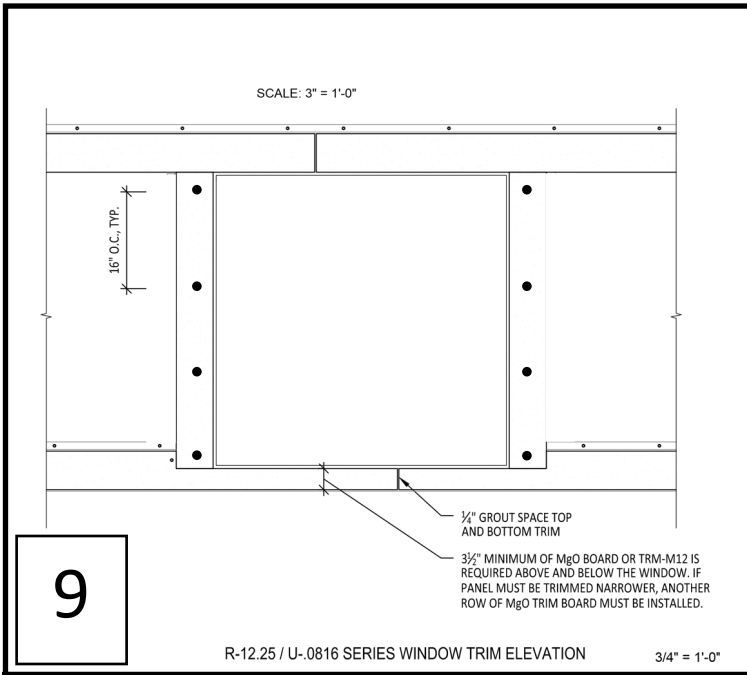


7

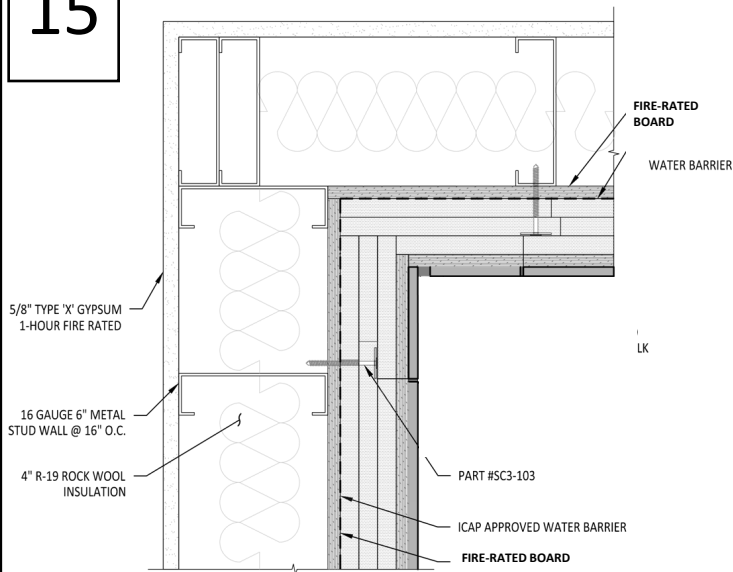
## Retainer Clip Locations Above Windows & Doors



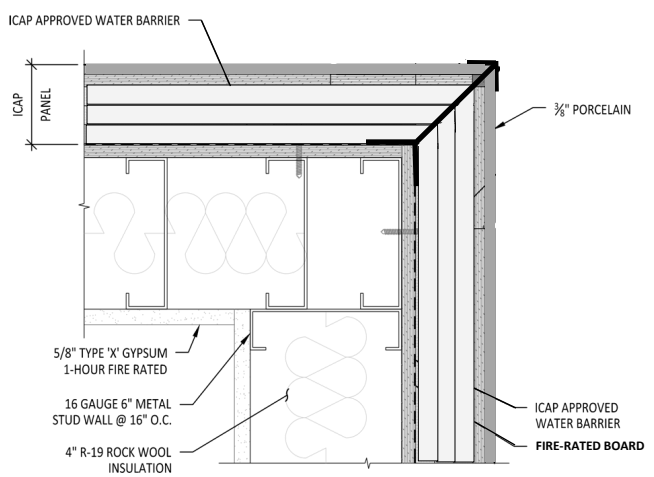
8



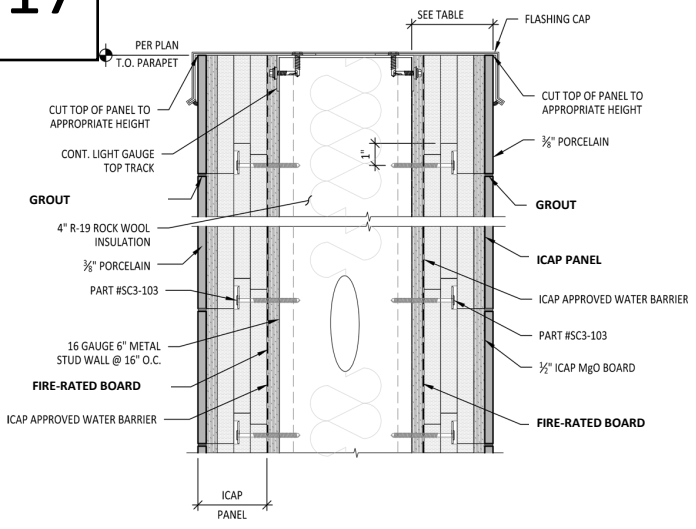
15



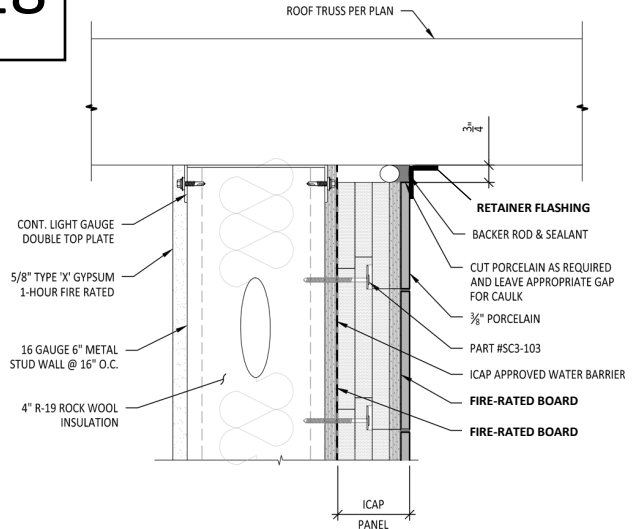
16



17



18



R-12 .25 INSULATION TABLE

<u>ICAP PANEL MATERIAL</u>	<u>TOTAL PANEL INCHES</u>	<u>MILLIMETERS</u>	<u>PANEL R-VALUE</u>
EPS FOAM	2.00"	/	R-9.70
1/2" Fire-board	.500"	12.7	R-1.0
BONDING ADHESIVE	.0625"	1.5875	/
PORCELAIN	.375"	9.525	R-.34
TOTAL	3.1875"	80.9625	R-11.04

NOTE:

19

60 PSI - HIGH DENSITY EPS (ASTM 578 TYPE XV EPS) w/ AN R-VALUE OF 4.85 PER INCH. PORCELAIN : R-.34 VALUE /INCH

# ICAP Porcelain Parts List

## R-12 Series with 1/2" MgO—NFPA 285 Compliant

### Photo

### Part #

### Description

## Standard EPS Field Panel and Long “Above the Window/Door” Panels



P1206040

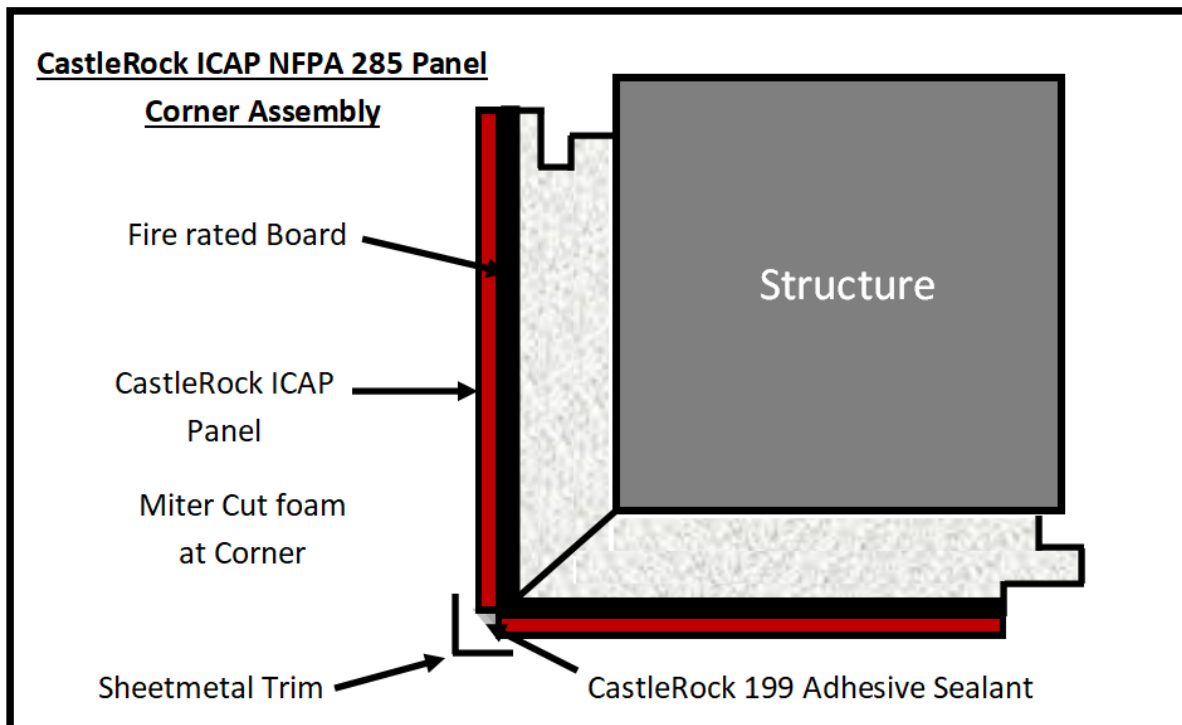
**Standard Single Field Panel:** 6" x 40" nominal Porcelain Panel with 3/8" grout joint. This is the most common used panel. It is used in most of the field except when starting on the Left-hand side and is limited above and below windows. See Ill. #11.

## MAG Panels for Around Windows and Above Doors

MAG12640



**MgO Panels:** MAG panels are used above and below the windows and above door openings. Panels may be trimmed to align with field panels, but 3-1/2" of MgO min. must be maintained above and below the window opening and above doors.



## Windows to Comply with NFPA 285



PFIR1206

**Porcelain Fireboard panel** to be used to cover a minimum of 3-1/2" above and below all windows and above all doors. Locate 1/2" from the window or door frame to allow for backer rod and sealant. Multiple panels may be used above or below the window to span the window width.



FIRTRM48

**Fireboard Window/Door Side Trim:** These sections install vertically on each side of a window or door. Locate 1/2" from the window or door frame to allow for backer rod and sealant. Secure to the wall with Screw: SC310300 on 6" centers. Seal trim to the wall with Dow 790 Sealant all around the window/door opening.

## Fasteners



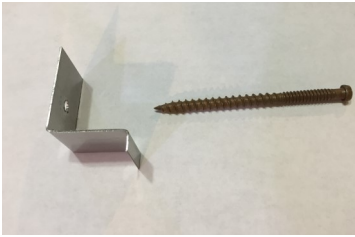
SC3103000

**Standard ICAP 3" Screw:** #9 min. x 2" Zinc Plated or Stainless Steel—T-25 Torque Drive, Course Auger Thread, Type 17 Point. Used to attach MAG Panels and Window Side Trim.



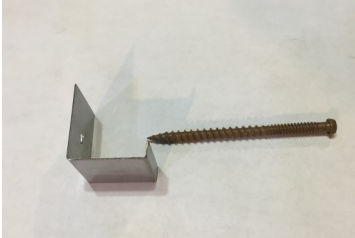
SCW10300

**Standard ICAP Screw/Washer Assembly:** #9 x 3" Zinc Plated or Stainless Steel—T-25 Torque Drive, Course Auger Thread, Type 17 Point. Used to attach EPS Foam Panels to Studs.



CLPT1200

**Top Metal Retainer Clip for R-12:** Fits into a groove in the top of the porcelain and screws to through the foam tongue into the sheathing or stud. With #9 x 3" Zinc Plated or Stainless Screw, Full thread, Flat Head, T21 Torque drive.



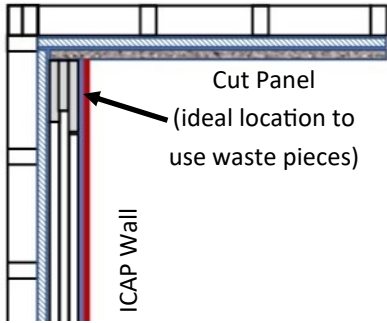
SSS04800

**Starter Strip:** 48" long section of the starter strip used at the bottom of the wall to receive the groove flange of first row of panels.

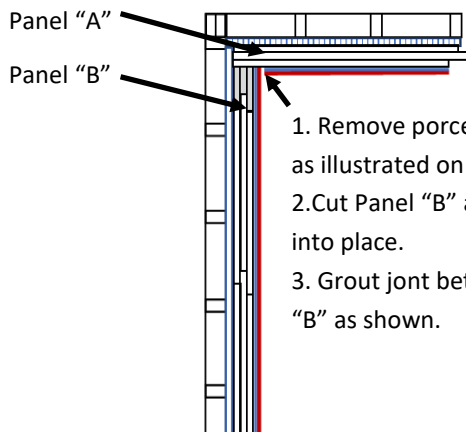


# Field Cut and Fit Instructions

Stucco or other finished wall



**Dead End Wall Termination**

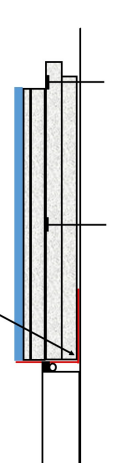


1. Remove porcelain & Fire board as illustrated on panel "A".
2. Cut Panel "B" as shown and fit into place.
3. Grout joint between panel "A" & "B" as shown.

**Inside Corner**

**MAG Panel Above Window:** The Mag Panel above the window almost always requires cutting the bottom off at the top of the window to align grout joints. Cut and fit the Mag Panel as required and apply adhesive in the corner of the flashing as illustrated. Secure the top and end flange with screws and clips.

Apply Dow 1199 adhesive here



**Above the Window**



# Window Termination

## Top View



Porcelain Window/Door Termination  
with Schluter Aluminum Trim

# Cutting CastleRock Insulated Porcelain Panels

Below are some common brands of saws used to cut the CastleRock Panels. See instructions on the following page.



## Super Thin Diamond Ceramic Saw Blade Porcelain Cutting Blade for Cutting Ceramic Or Porcelain Tile

Visit the GoYonder Store

★★★★☆ 1,557 ratings | 18 answered questions

Best Seller

\$11.74

Get Fast, Free Shipping with Amazon Prime & FREE Returns

Clip Save 5% with coupon. Terms

Get \$50 off instantly: Pay \$0.00 \$11.74 upon approval for the Amazon Rewards Visa Card. No annual fee.



Size: 5-Inch



Bahco

11" BAHCO JAPANESE STYLE PULL SAW - PC-11-19-PS

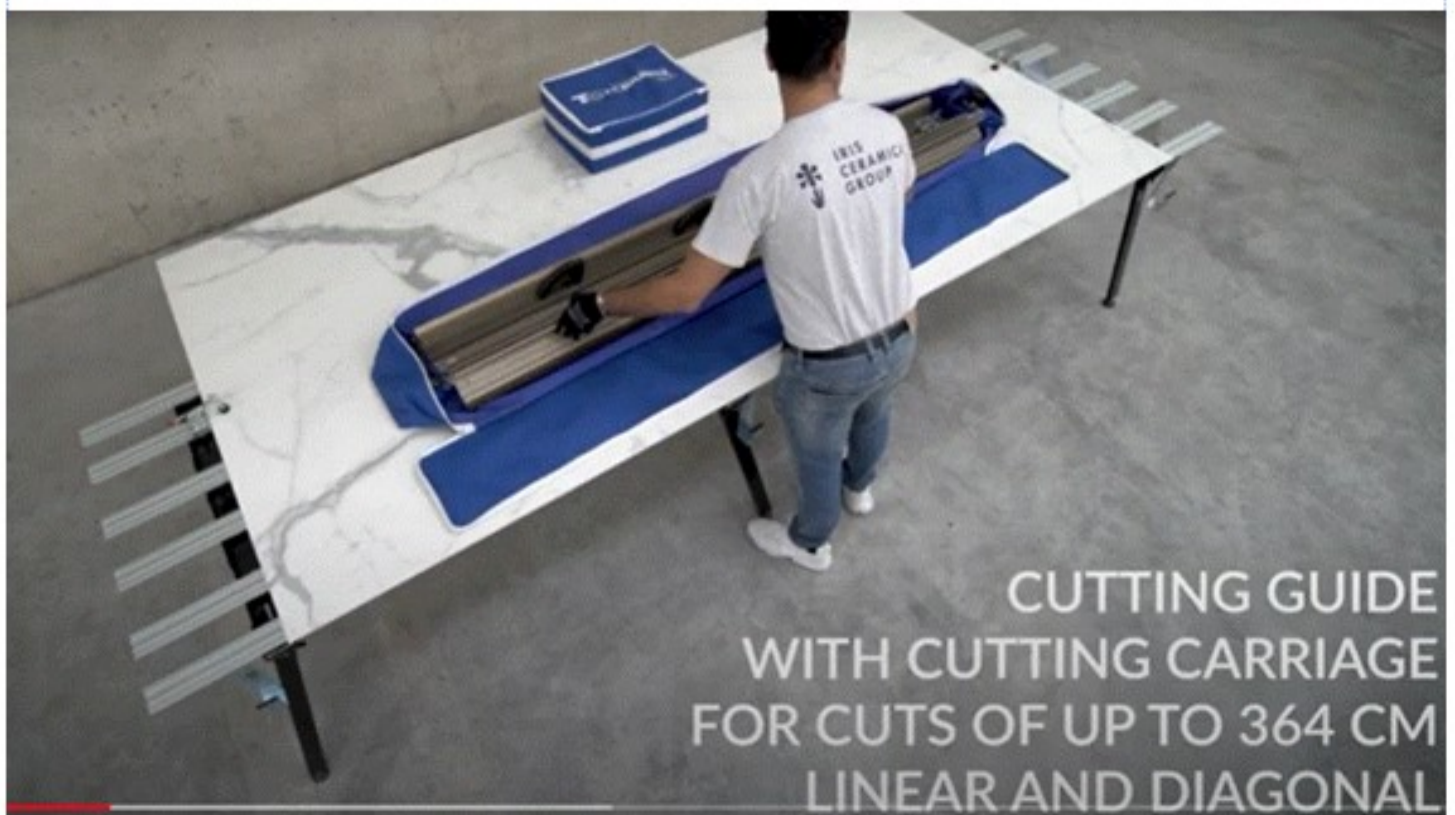
\$32.63



## How to cut CastleRock Insulated Porcelain Panels

1. Place the panel with the porcelain upwards and the foam side downward on a table or saw horse assembly.
2. Set up a saw guide and clamp it to the panel for a straight cut.
3. If you are using water on the saw blade as you cut, only cut about 1/2" into the foam.
4. Once you cut the porcelain, use the hand saw shown on the previous page to cut through the foam.
5. If you are dry cutting, you can cut all the way through the foam panel in one motion.

**Below is a typical cutting table with slats to allow the saw blade to cut in between without cutting the table.**



Click the following link to go to you tube videos:

[Large Format Manipulation: Slab System - YouTube](#)

# ICAP-USA

## Porcelain Cladding Maintenance Instructions

ICAP Porcelain Cladding can be installed in numerous design possibilities and a variety of looks. The Porcelain is easily cleaned due to the nature of the porcelain and its impervious surface. The grout joints are more vulnerable and should be treated carefully based on the type or grout :

### Routine Porcelain Tile Care

Regular, basic cleaning with warm water and mild soap is sufficient to keep porcelain cladding looking good. You can also use gentle, everyday multipurpose spray cleaner to remove hard water deposits and mildew. Do not use cleaning products that contain acids or ammonia (and other harsh chemicals) as these can damage grout and glazed surfaces of the tile. Cladding can be spray washed at normal residential water pressure levels or with low pressure washers. Do not hold nozzle closer than 24 inches from the tile or grout to avoid damage of force water between joints.

### Grout Care

100% Silicone Grout: This grouting method may be cleaned in the same manner as routine porcelain care described above. Be careful not to force water in the grout seams or damage the silicone.

Cementitious Grouts: This type of grout should not be cleaned until it is completely dried and cured, then the grout should be treated with a silicone sealer. Grout, the material used to fill the spaces between tiles, is porous, and sealing it at this time will simplify maintenance in the future (Epoxy grouts and 100% silicones grouts do not require a sealer). We recommend you apply a sealer at least twice a year for maximum stain protection over cementitious grouts.

### Heavy Duty Cleaning

Neglected or situations where extreme dirt, smog, mold, mildew or dust is common may require more intensive cleaning. Clean glazed wall tiles with a scouring powder or all-purpose cleaner applied to a non-metallic pad. Rinse and wipe dry. In extreme cases use a commercial tile cleaner, or apply a strong solution of an all-purpose, non oil-based cleaner or scouring powder paste. Let stand for five minutes, brush and scrub. Then rinse with clean water and wipe dry..

### Purchasing Maintenance Products

Ceramic tile and Natural Stone cleaning products and sealants may be purchased at your local home center or floor covering store. Consult the manufacturer of the cleaner or sealant for usage instructions and more detailed information about how its spe-

### DO NOT...

Use cleansers containing acid or bleach for routine maintenance.

Use wax cleaners, oil-based detergents or sealants to maintain your tile (sealants may be used on grout joints).

Use ammonia (it will discolor grout).

Use harsh cleaning aids like steel wool pads or scouring pads containing metal.

Use a cleaning agent that contains color

# ICAP™ Insulated Panel Warranty

P.O. Box 1258 Meridian ID 83680 Phone: 208 895-8557 Fax: | 208 639-6422 web: [www.ica-usa.com](http://www.ica-usa.com)

## WHAT DOES THE LIMITED WARRANTY COVER?

InsulStone, Inc., DBA ICAP-USA™ warrants to the original purchaser/consumer at the time the products are installed, to be free from defects in material and workmanship in the course of manufacture.

This warranty is limited to the terms and conditions, exclusions and limitations, requirements and legal rights stated in this Warranty. In the event of repair or replacement under the terms of this warranty, the original warranty shall be limited to replacement or repair of the defective product and will extend for the balance of the warranty period from the date of the original installation. The coverage offered by this Express Limited Materials Warranty to the original purchaser and may only be transferrable to subsequent purchasers with the prior written approval of ICAPUSA.

## WHO IS COVERED AND HOW LONG DOES THE COVERAGE LAST?

Should a material defect occur within 5 years of the original purchase by the registered purchaser, the manufacturer will in its sole discretion, replace the defective product before it is installed, or, during the first 5 years, reimburse the party for losses up to no more than twice the manufacturers selling price of the defective portion of the Product. During the 6<sup>th</sup> through 25<sup>th</sup> year, the warranty coverage shall be reduced by 5% per year such that after the 25<sup>th</sup> year all warranty coverage shall cease and the warranty coverage shall be terminated. The Manufacturer's replacement of the defective product or granting of a refund pursuant to this Warranty shall be in its sole discretion and the sole exclusive remedy available to the covered party with respect to any defect. MANUFACTURER WILL NOT REFUND OR PAY ANY COSTS IN CONNECTION WITH LABOR OR ACCESSORY MATERIALS.

## WHAT DOESN'T THIS WARRANTY COVER?

This warranty does not cover damage of any kind resulting from: Faulty or improper installation

Any and all labor for repair or replacement of warranted parts.

Shipping costs for replacement parts.

Movement, waving, buckling, or other distortions.

Damage from impact or contact with foreign objects, chemicals, etc.

Damage from failure to properly maintain the Product.

Installation of the Product in direct contact with dissimilar materials or use of incompatible caulking, adhesives, fumes, vapors or coatings.

Changes in the surface color resulting from exposure to the elements (i.e. soiling, staining or discoloring resulting from local conditions which InsulStone, Inc. has no control over.

Settlement or shrinkage of the property or structure.

Fire or heat from barbecues, heaters, vents, etc.

Lightning, hurricane, tornado, windstorm, earthquake, hail, snow or ice accumulation, or other acts of God.

Surface deterioration from air pollution, or seacoast environment.

Abuse, misuse, vandalism, or abrasion.

Product that has been painted, coated, colored or altered.

Chips, cracks that do not affect the performance of the Product are not covered under this warranty.

Any other causes beyond InsulStone/ICAP-USA's reasonable control.

Substitution or use of specialty parts not listed in ICAP-USA's standard parts and rice list.

## OTHER LIMITATIONS:

ICAP-USA cladding is designed for use as exterior cladding installed in accordance with its published installation instructions and should not be used as roofing, floors, on ceilings, or in locations that require water tight protection.

We reserve the right to discontinue or change any design, color or texture, of any of our products at any time and without notice or liability. If, for any reason, you make a warranty claim and the product type originally installed is no longer available, we may substitute another product determined by us to be of comparable quality and price.

There are no warranties expressed, implied or written that ICAP-USA accepts responsibility for other than this Warranty.

4. ICAP-USA IS NOT RESPONSIBLE FOR ANY CONSEQUENTIAL OR INCIDENTAL DAMAGES ARISING OUT OF ANY BREACH OF THIS EXPRESSED WARRANTY, OR ANY OTHER ORAL, WRITTEN OR IMPLIED WARRANTY THAT MAY APPLY TO YOUR PURCHASE, AS IT RELATES TO OUR PRODUCTS.

5. THIS IS YOUR EXCLUSIVE WARRANTY AND IS IN LIEU OF ALL OTHER WARRANTIES, EXPRESSED OR IMPLIED, INCLUDING BUT NOT LIMITED TO IMPLIED WARRANTIES OF MERCHANTABILITY AND FITNESS.

This warranty gives you specific legal rights. You may also have other rights which vary from state to state. SOME STATES DO NOT ALLOW THE EXCLUSION OR LIMITATION OF INCIDENTAL OR CONSEQUENTIAL DAMAGES, SO THE ABOVE LIMITATION OR EXCLUSION MAY NOT APPLY TO YOU. FAILURE OF PART OF THIS WARRANTY TO COMPLY WITH LOCAL OR FEDERAL LAW DOES NOT VOID DOCUMENT IN ITS ENTIRETY. This warranty shall be interpreted under the laws of the State of Idaho.

## HOW DO I REGISTER THIS WARRANTY?

One application per property location where ICAP-USA/InsulStone, Inc. cladding is installed must be completed and mailed to ICAP-USA/InsulStone, Inc. P.O. Box 1258 Meridian, ID 83680 within 30 days after the original installation has been completed. The notice should include the following: (1) Name of owner

(2) Address of property or location of the installation (3) Date of purchase (4) Proof of purchase

## HOW DO YOU SUBMIT A WARRANTY CLAIM?

You must submit a claim in writing with us within the warranty period and within a reasonable period of time after the defect is discovered. To initiate the claim, please go to [www.icap-usa.com](http://www.icap-usa.com), contact us at [sales.icap@gmail.com](mailto:sales.icap@gmail.com) or by mail at:

ICAP-USA/InsulStone, Inc., PO Box 1258, Meridian, ID 83680. Phone#: 208.895.8557

ANY REPAIR OF THE PRODUCTS UNDERTAKEN WITHOUT PRIOR WRITTEN AUTHORIZATION FROM ICAP-USA/INSULSTONE, INC. PRIOR TO RECEIVING WRITTEN APPROVAL FROM INSULSTONE, INC. WILL VOID THIS WARRANTY.

This Warranty is effective as of 09/01/2016 and replaces all prior warranties.

Owner \_\_\_\_\_

Installation Address: \_\_\_\_\_

Name of installing Contractor: \_\_\_\_\_ Date Installed: \_\_\_\_\_

Date of Completion: \_\_\_\_\_

Phone # \_\_\_\_\_ Owner Signature \_\_\_\_\_

Return a copy of this Limited Materials Warranty to ICAP-USA PO Box 1258 Meridian, ID 83680