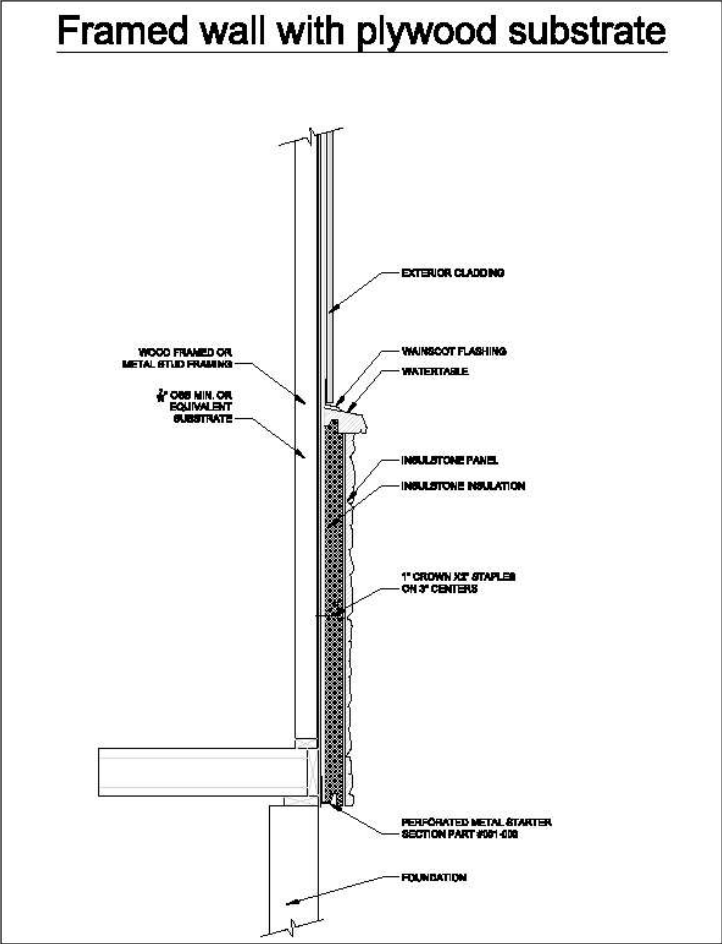


# Wainscot Flashing



The wainscot flashing is designed to be installed adjacent to the structural wall cladding (usually OSB) and lap over the wainscot cap stone to prevent water from penetrating the veneer system. A bead of sealant is usually required by local building officials between the flashing and the cap. The weather protective barrier and the siding material or cladding used above the flashing should overlap the flashing.

This flashing material is commonly used for other wall penetrations and protrusions when necessary.

Overhang/Soffit termination

Sidewall terminations

Chimney Chase Terminations

Column Base Terminations

Light Fixtures

Electrical Outlets

Dryer Vents

Deck Terminations

