

InsulStone™
Installation Guide

InsulStone™



*Stack
&
Staple*

*Stone Cladding
Patent Pending*

Beautiful, durable
mortar-less, cast stone
that does not require a
mason for installation.

Available in a variety of
colors and the following
styles of stone:

- ♦ Stacked Stone
- ♦ Limestone
- ♦ Ledge Stone
- ♦ Ledge Stone/Field Stone Blend



Take the **high cost** and
work out of masonry
with *InsulStone™*

PO Box 1258
Meridian, ID 83680
100 S. Adkins Way, Suite 104
208 895-8557

www.insulstone.com

e-mail: insulstone@gmail.com

InsulStone Installation Guide

Table of Contents

Table of Contents	Page 1
Testing and Certifications	Page 2
General Information	Page 3
Tools Required	Page 4
Installation Instructions	Page 5
Illustrations	
Components blow apart drawing	Page 6
Fastener through Tongue drawing	Page 7
Weather Protective Barrier Installation	Page 8
Weep Screed Installation	Page 9
Starter Section Installation	Page 10
First row	Page 11
Splices	Page 12
Inside Corner	Page 13
Outside Corner	Page 14

Testing and Certifications

InsulStone™ Cladding(Patent Pending). Test reports and certifications are listed below:

ICC-ES Evaluation Report ESR-2836
Intertek Test Reports Report Number 3173059-COQ-008
 Report Number 3173059-COQ-007
 Report Number 3173059-COQ-001

ICC ES Evaluation Reports available at www.icc-es.org

Intertek test reports available at www.spec-direct.com

InsulStone Installation Guide: Request from icap.sales@gmail.com

Testing conducted in accordance with the following:

Acceptance Criteria: ICC AC51

Evaluation Guide: ICC EG 315

ASTM E330(2002): *“Standard Test Method for Structural Performance f Exterior Windows, Doors, Skylights and Curtain Walls by Static Air Pressure Difference”*

ASTM E84(2009) -08a, CAN/ULC S102 (2007) *“Standard Test Method for Surface Burning Characteristics of Building Materials”*

ASTM C578 *“Standard Test Methods for EPS Foam”*

Summary

ASTM E84, CAN/ULC S102 (2007)

Flames Spread Rating: 0

Smoke Generation Rating: 0

ASTM E330(2002) *“Standard Test Method for Structural Performance f Exterior Windows, Doors, Skylights and Curtain Walls by Static Air Pressure Difference”*

Ultimate Load: 127 psf

Workmanship

This Installation Guide assumes the construction personnel have knowledge of the materials described and their proper methods of installation.

Prior to commencing activity related to the scope of this Guide, review all adjacent products and other subcontractor work that precedes the installation of InsulStone cladding ensure proper workmanship is reflected and that there are no recognizable errors or deficiencies.

Building Code Requirements

Building code requirements vary from area to area. Check with local authorities for building code requirements for your area and application. Carefully read all sections of this guide and follow the manufactures Installation Instructions before proceeding with your InsulStone application. In the event the manufacturers Installation Instructions conflict with the inter of statements made in this document, contact the manufacture for additional guidance.

Material Requirements

Flashing

All flashing and flashing accessories must be corrosion resistant materials and integrated with the WRB materials. Flashing must be installed at all through the wall penetrations and at terminations of InsulStone panel system, around doors, windows and other protrusions in accordance with local building codes.

Rain screen Drainage Plane and Air Curtain Ventilation System

InsulStone is designed with Rain Screen Drainage system incorporated into the backside of the insulated panel. Stand-offs are located every 3 inches on center and provide a 1" support leg for the location of the fasteners. These stand-offs create an Air Curtain Ventilation System.

The Rain Screen cavities in the backside of the panel provide drainage channels to route incidental water penetration between the WRB to the bottom of the wall and the exterior of the structure. A foundation or weep screed is recommended at the bottom of the wall to channel water away from the structure.

Air Curtain Ventilation is provided in the backside of the InsulStone panel and allows air to enter at the bottom of the cladding and thermal siphon up the wall between the WRB and the panel causing evaporation and drying the area in between. Part # 001-001 is required at the top of the wall an Part # 001-002 above a wainscot cap to provide satisfactory ventilation.

Weep Screed

Weep screeds must be made of corrosion resistant metal a minimum of .019 inches or 26 gage in thickness; or plastic weep screed a minimum of 0.050" with a minimum vertical attachment flange of 3 ½" wide.

Fasteners

Corrosion resistant fasteners must be used to secure the flashing and lath. A variety of fasteners are available (i.e. staples, screws, or nails) refer to ASTM C1063 Sec. 7.10.2

Tools Required

Walls and Wall Systems

Clearances

Cautions

- Do not subject InsulStone to frequent water contact such as sprinklers or direct spray. Place downspouts or drainage pipes so the water is not frequently contact the stone.
- Do no subject InsulStone to contact with de-icing materials, salt, asphalt roofing material or its drainage, or other harsh chemicals. Prolonged exposure may damage the stone or panel.
- Do not expose the EPS panel to extended periods of exposure to sunlight. All surfaces fo EPS must be covered with stone, flashing, wood or compatible mastics or caulking.

Wall System	Water Resistive Barrier	Fasteners	Fastener Application	Fastener Location
Wood or Steel Stud, no more than 24" O.C. covered with 7/16" OSB, plywood, or equivalent	Minimum of 60 minute paper, or approved equivalent weather resistive barrier	1" crown X 2" long corrosion resistant staples (ASTM 1063)	Staples applied through the top flange of the panel penetrating the sheathing by a minimum of 1/8"	Staples to be located 3/4" to 1 1/2" down from the top of the flange every 3" O.C.

Wall System	Water Resistive Barrier	Fasteners	Fastener Application	Fastener Application
Clean Concrete, masonry / CMU, or Stucco	Note: Check with local building official for requirements in your area.	#6 X 2" minimum masonry anchor with fender washer head (3/16" I.D. by 3/4" O.D.) (ASTM 1063)	Pre-drill and install screw/washer assembly with impact drill	Flange 3" - O.C.
Wall System	Water Resistive Barrier	Fasteners	Adhesive Application	Fastener Application
Clean Concrete, masonry / CMU, or Stucco	Note: : Check with local building official for requirements in your area.	Fastener: RAMSET Part #1524SDP 3" smooth, straight shank pins with washers	Part #1524SDP 3"	Flange 8" - O.C.
Wall System	Water Resistive Barrier	Fasteners	Fastener Application	
Metal Buildings or other surface / wall construction not listed above	Note: A Weather Resistive Barrier may be needed to prevent moisture from penetrating the wall. Check with the metal building manufacturer.	#6 X 2 " minimum TEK screw or metal piercing screw with fender washer head 3/16" I.D. by 3/4" O.D. (ASTM 1063)	Screw applied through the top flange of the panel 1" down from the top of the panel and penetrating the "High-Rib" of the metal sheathing by a minimum of 1/2"	

Installation Instructions

I). Interface with Other Work:

Coordinate with installation of substrate required for installation. If Electrical, Plumbing and other Mechanical penetrations are installed after the exterior siding panels are installed, provisions for watertight sealing of all penetrations must be addressed.

II) General: Install in accordance with local building codes. In the absence of local building codes, install in accordance with the requirements of the IRC/IBC and the manufacturers installation instructions. Use a qualified installer.

III). Flashings:

Install flashings in accordance with the window and roofing manufacturer's installation instructions, or in the absence of these instructions, install per section 703.8 of the 2009 International Residential Code (IRC) at the following locations:

- a). Top of all doors and windows,
- b). Projecting lips or conversion to masonry or other sheathing, or an areas that may allow water to enter.
- c). At the base of a wall to prevent wicking into the plate or substrate.

VI). Weather Protective Barrier:

A weather protective barrier (60 minute paper or approved equivalent) is required by the manufacturer to be installed behind the siding as a protective water barrier. Check with your local building official for weather protective barrier requirements in your area.

V). Installation of Interlocking Insulated Brick or Stone Panels:

a. Install the weather protective barrier.

b. Prior to installation of the starter section, determine its location in regard to windows and other opening to align with the stone height. Stone may be trimmed to fit at openings, but preplanning can save work and effort. Allow for the drip cap/sill to be located under the openings such as windows. Be sure to seal water tight any areas that may allow water penetration into the wall.

c. Install the Starter Section (Part# 001-000) – Install the starter section at the bottom of area where the panels are to be installed a minimum of 6" above grade. Attach the starter section with 1 ½" corrosion resistant roofing nails to the sheathing every 6 inches on center. Starter section must be level and straight. Use of a transit or laser level is recommended.

d. Fastener Attachment Pattern: Secure the panels to the wall using the specified fasteners. 1inch crown x 2 inch long corrosion resistant staples a minimum of every 3 inches on the tongue flange of the panel or equivalent.

e. Panel placement

The tongue flange must always be placed upward to prevent water intrusion into the wall. The panels are designed to be installed from bottom up and left and install to the right. Inspect each panel for flaws or damage prior to attaching to the wall. Use a level to ensure each row is straight and level before attaching to the wall or proceeding to the next row.

f. Corners or ends

Each row usually begins and ends at a corner or an end panel. Doors and windows require end panels or a protruding flange typically of wood or metal protruding 3 ½" outward from the wall to terminate a row. Inside corners are simply cut to fit and dead ended into the wall or adjoining panel. Panels may be miter cut for inside corners if desired. Install the outside corners and end panels for each row prior to the horizontal row of siding panels. The last panel may be trimmed to fit. Use silicone to seal it to the adjacent panel.

g. Flashing around Siding, Windows, Doors and Protrusions: Prior to installing panels around windows, doors and protrusions install flashings in accordance with local building codes.

h. Windows Sill –Allow the correct space between the bottom of the window protrusion and the panel for the sill. Install flashing and seal around doors and windows to prevent water intrusion into the wall. Consult your local building official for requirements in your area.

i. Header above doors and windows– Install flashing above the window. Install a section of the starter strip in line with the top of the first course above the top of the window. This may create a void between the top of the window and the first row of stone siding above the window. If so, measure gap between top of the window and the bottom of the standard course above a window or door. Trim the color matched coated foam header (or filler) (part# 1005) to fill the void. Attach with styrofoam foam compatible adhesive and screws or finish nails and seal around the window to prevent water intrusion.

Note: Windows are usually designed with "weep" holes in the bottom flange. Do not block these openings when caulking and sealing around windows. Always drain water away from the wall. Do not allow water to drain into the wall.

j. Soffits: Continue to the soffit and trim the last row to fit and/or Install a wood, metal, or plastic trim fascia at the soffit to finish.

k. Clean area of trash and materials and touch-up chips or other damage. Inspect all locations for possible water leaks.

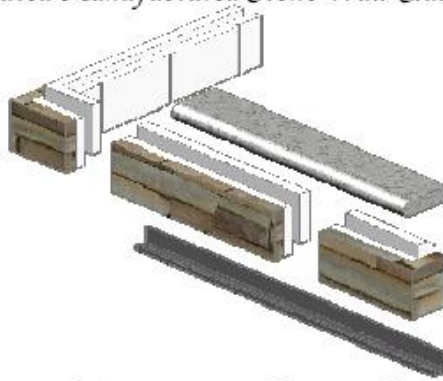
Corporate Office: InsulStone, Inc.
P.O. Box 1258
Meridian, ID 83642

Ph.: 208-639-6422
Fax: 208-639-6422
e-mail: InsulStone@gmail.com

"The InsulStone™ System"

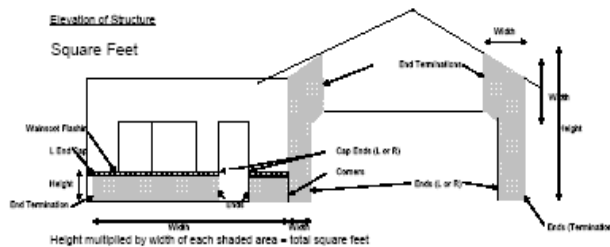
InsulStone™

Patent Pending
Insulated Manufactured Stone Wall Cladding



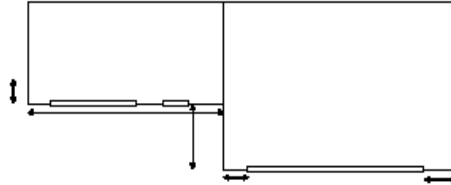
To determining the parts you need for a job!
Use the form below:

InsulStone



Perimeter Feet

Top View - Foot print of structure



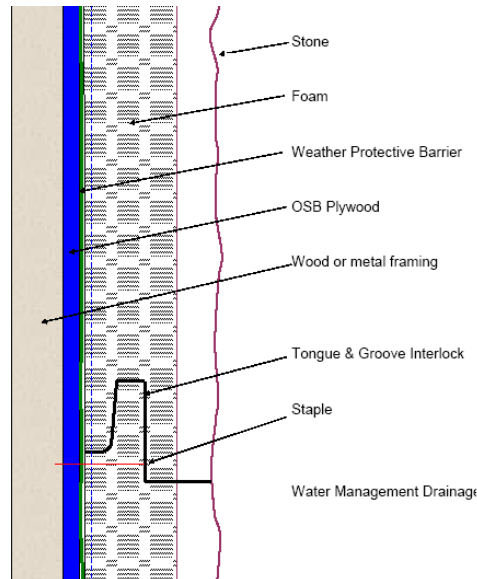
Total these less door ways for linear ft. of starter/cap
Note: Cap is usually used under the windows.

Stone	\$9.95 Square Foot		
Total Square Feet to be covered (all inclusive):			
Corners	\$9.95 Vertical Foot		
Total Vertical Feet of Corners (height of all corners):			
Terminations/Ends	\$8.95 Vertical Foot		
Total Left & Right Terminations (at doors, windows, mid-wall etc.):		L=	R=
(unless you are using metal flashing, wood, or composite trim at doors and windows)			
Starter	\$1.25/Linear Foot		
Total Perimeter Feet of Starter (total horizontal distance):			
Drip Cap	\$1.50/Linear Foot		
Total Linear Feet of Drip Cap (cap incl. under windows):			
Total Left & Right Drip Cap Terminations (at doors, windows, etc.):		L=	R=
Total Left & Right Drip Cap Corners (seam location side):		L=	R=
Flashings	\$1.75/Linear Foot		
Siding Transition (between wainscot drip cap and siding):			
Above Window Flashing (in feet):			
Window and Door Flashing: (for the sides of windows and doors):			
Accessories	\$8.00 Each		
Electrical Outlets (Single):			
Electrical Outlets (Double):			
Light Fixture Plates:			
Hoses Bibs:			
Column Wrap Panels - InsulStone			
Note #1: 8 panels = 1 vert. ft.		Note #2: *Check with InsulStone for availability of 24"	
To Fit Finished Framing:		4"	6 3/4"
Outside Dimensions (Call Out):		12"	15"
Prices per Vertical 5'		18"	24"
		28"	
		\$ 22.00	\$ 30.00
		\$ 33.00	\$ 44.00
		\$ 52.00	

Panel sections are 6" high with interlock on the corners. See Finished Framing dimensions above.

Component Description

The InsulStone System has 5 primary components. They are the standard (1) starter section, (2) flat panel, (3) Corner Panel (lefts and rights), (4) end panel (lefts and rights) and the (5) wainscot cap. Several accessory parts are also available for trim, electrical, etc.



“Interlocking Tongue and Groove”

The interlocking tongue and groove is designed to be installed with the tongue upward and from left to right, although panels can be installed from right to left if necessary.

Weather Protective Barrier

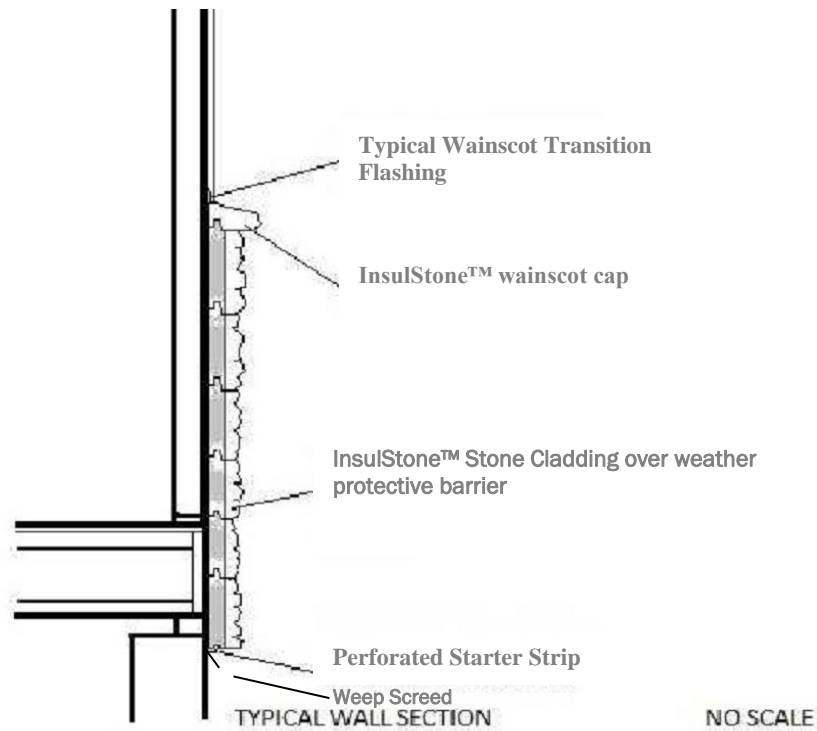
A weather protective barrier (60-minute paper or approved equivalent) is required by the manufacturer to be installed behind the siding as a protective water barrier. Check with your local building official for weather protective barrier requirements in your area.

Commonly used materials are House Wraps installed in accordance with their manufacturer's installation instructions or a 60-minute Building Paper installed in accordance with local building requirements as a weather protective barrier.

Be sure to seal all penetrations through the barrier and splices per the manufacturers installation instructions.

Weep Screed

Installation requirements for weep screed vary in different jurisdictions, so check with your local building department for requirements in your area. The weep screed is usually installed at the base of the wall as a flashing to prevent water from entering the wall at the transition point between the wall and foundation. This metal or plastic flashing routes any drainage water outward from the structure. Standard weep screeds are usually available from your local lumber yard or hardware store. (See installation instructions below).



InsulStone Starter Section

InsulStone provides a perforated metal starter section that allows moisture trapped between the weather protective barrier and the back of the insulated panel to drain and escape from the wall. It also allows a small amount of air to enter the vertical cavities on back side of the insulated panel and flow by thermal siphoning or from external wind forces. This air movement allows any trapped moisture to evaporate and exit the wall eliminating mold or rotting concerns. (see illustration below):

Before installing the weep screed (if required) and starter section, determine the correct location for the InsulStone to fit perfectly under windows or other protrusions. Select point on each side of the flat wall section that are level and at the correct height. After determining the location of the starter, snap a chalk line. Install the weep screed first about 1" lower than the bottom of the starter the starter section and level with the line. Install the starter section next on the line. Repeat this process on all sections of wall to be covered with InsulStone.



Now You're Ready to Install the First Row of InsulStone

Begin at the corner of the building on left hand side. Locate the ideal position for the starter section in relationship to windows and foundation height. The starter section can be lapped up to 3 inches down onto the foundation and still be secured into the wood framing. This “up & down” adjustment allows you to predetermine how the stone will fit at the window height. The illustration above shows the starter located so the cap fits just under the window without the stone needing to be cut to fit. It is recommended to maintain the same elevation completely around the structure.

Install a Corner First

You will need a standard flat panel and a Left-hand corner panel to start. Start at the left hand corner and align the corner panel with a standard panel to the desired fit. (see illustration below):



Install the Corner at the other end next

Install the right-hand corner in the same manner on the other end of the wall. Next you begin installing flat panels from left to right to fill in the space in between until you come to the last panel. This will require a splice.

How to Fit and Splice

Splicing Panels

Each row will require at least one cut panel and a splice. A “Butt Splice” is the preferred method for this purpose.

Butt Splice:

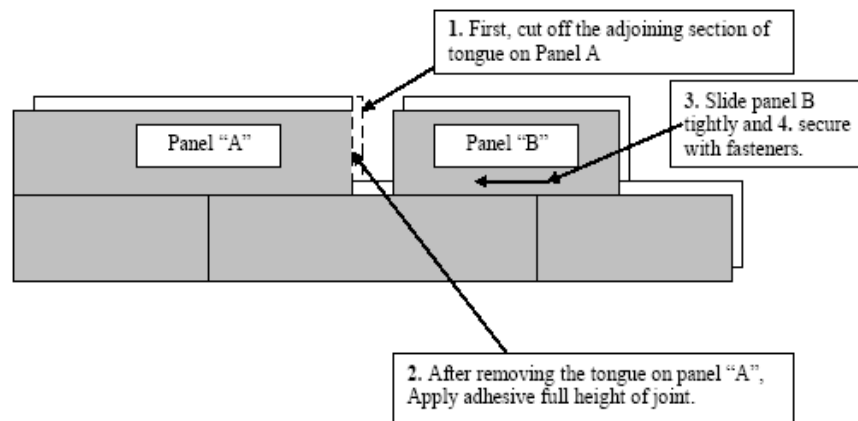
Installing panels from left to right:

Step #1: Cut the tongue from panel “A” and secure it to the wall with fasteners.

Step #2: Apply silicone adhesive to the foam the full height of the panel on the vertical end where you just removed the tongue.

Step #3: Using the left over piece from the end of the preceding row(panel #B), slide it tightly against the adhesive on panel A.

Step # 4: Secure panel “B” in place with fasteners and proceed installing the row. Repeat the process on each row or when necessary.



Corners

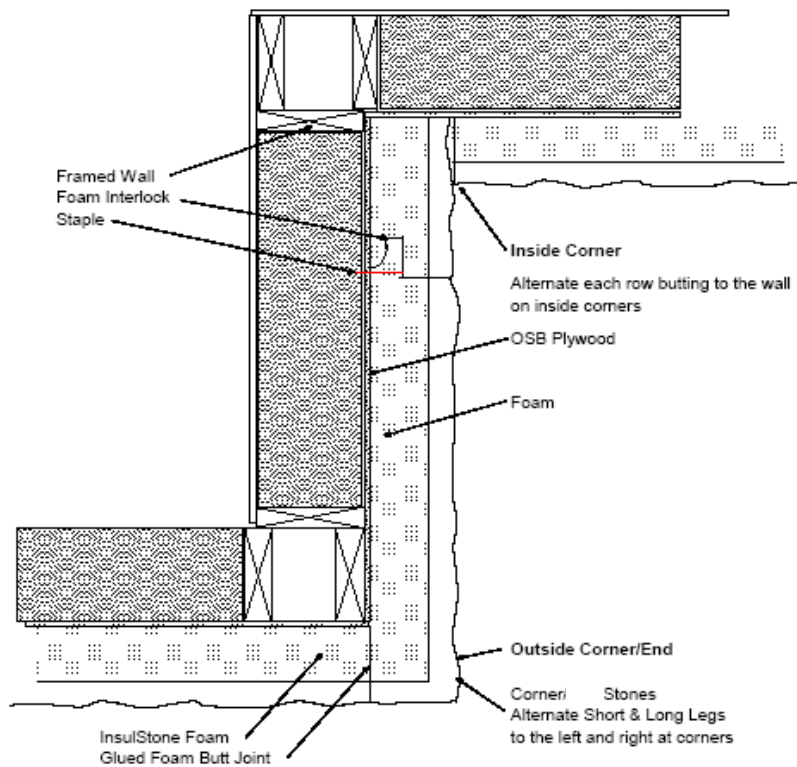
Corner Stones are available in left hand and right hand styles. To differentiate a left hand from a right hand, hold the panel with the flange to the top and the end with the stone wrapping around determines the left or right hand. The short leg is always the same length and has a step in the stone, while the long leg varies to develop a staggered seam in the wall. The factory will equally mix left and right hand sections with a variety of long leg lengths to keep the pattern random.

The stones should be installed with the long leg alternating left and right on intermittent rows to alternate prevent a consistent pattern of seams.

When installing corners, align them with a panel from the adjacent wall to position the panel in the correct location on the wall prior to fastening to the wall.

Inside & Outside Corner Detail

Top View



Inside Corners:

Inside corners are usually made by continuing the flat panel to die into the adjoining wall as illustrated. The stone panel from the right hand side in this illustration may require removal of high spots on the stone to fit snugly together for the most pleasing visual appearance. The next row is alternated with the panel at the right of this illustration continuing to the wall and the other panel fit to it. This pattern is repeated as each row is alternated to the termination point.

Ends

End Stones are peculiar to the InsulStone system. Since the stone is laminated to foam, the panel is thicker than traditional stone veneers so the end panels are designed with the stone wrapping the foam with a return to the wall. End stones are usually used at the following locations:

- On the sides of windows and doors.
- When the stone terminates in mid-wall.
- When the stone terminates at a corner.

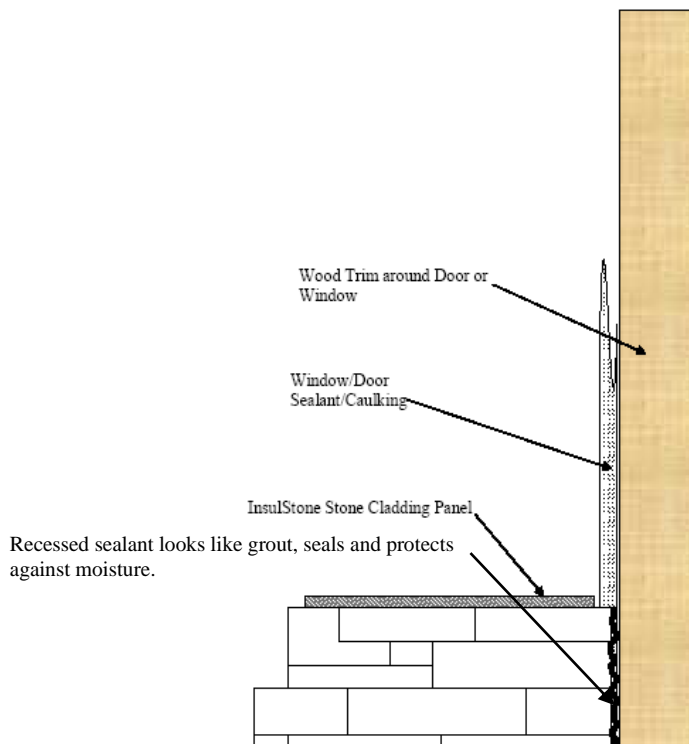
Ends are not used at these locations:

- Inside corners
- When a wall dies or terminates into a protrusion.
- When window or door trim or casing protrude more than 3 " from the wall.

Note: Ends are ordered in Left Hand or Right Hand configurations and will come with varying long leg lengths. The short leg is always $2 \frac{3}{8}$ " or the thickness of the foam. The difference between a corner and an end is the short leg of the end does not have an interlock step. In the field, the protruding step of a corner can be cut-off to convert a corner into an end. Ends can be used as corner to fit a flat panel that has been cut off and a "splice joint" may be used.

When installing an end against a piece of trim around a door or window, apply a 1 inch wide bead of matching colored approved acrylic window & door caulk (Sherwin Williams Paint stores usually carries the broadest assortment of colors) about $\frac{1}{4}$ " in thickness.

When you install the end stone, press it into place over the caulking, this will fill and gaps providing a weather barrier and stone.



Above Windows, Doors and Wall Penetrations

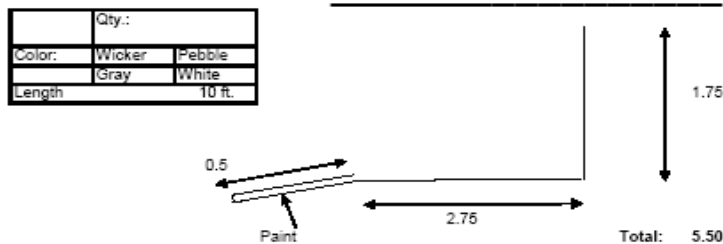
InsulStone™ offers the following flashings and they can be ordered with stone cladding order or you can have them made locally. We recommend a painted aluminum flashing that conforms with your local building codes. Dimensional drawings are illustrated below:

InsulStone™

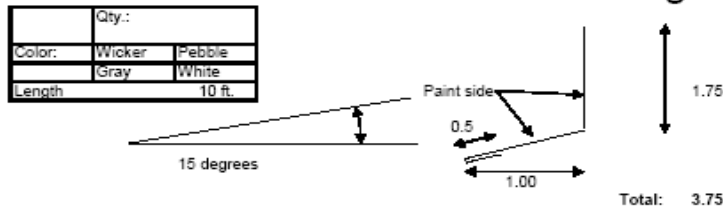
Website: www.insulstone.com, **e mail:** insulstone@gmail.com
208 895-8557, 100 S. Adkins Way, Suite 104 Meridian, ID 83642

Above the Window Flashing

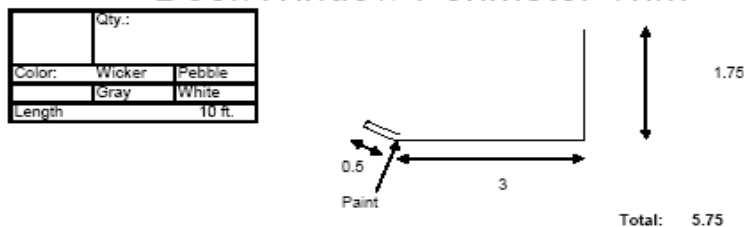
Customer Name: _____



Wainscot Transition Flashing



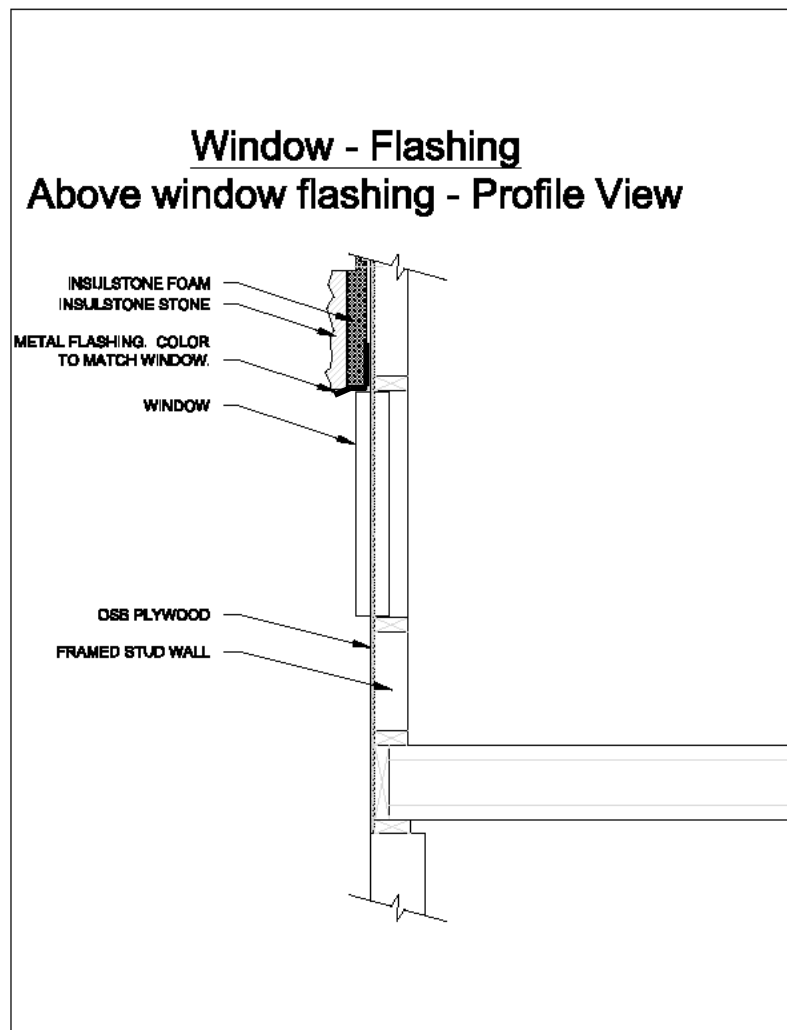
Door/Window Perimeter Trim



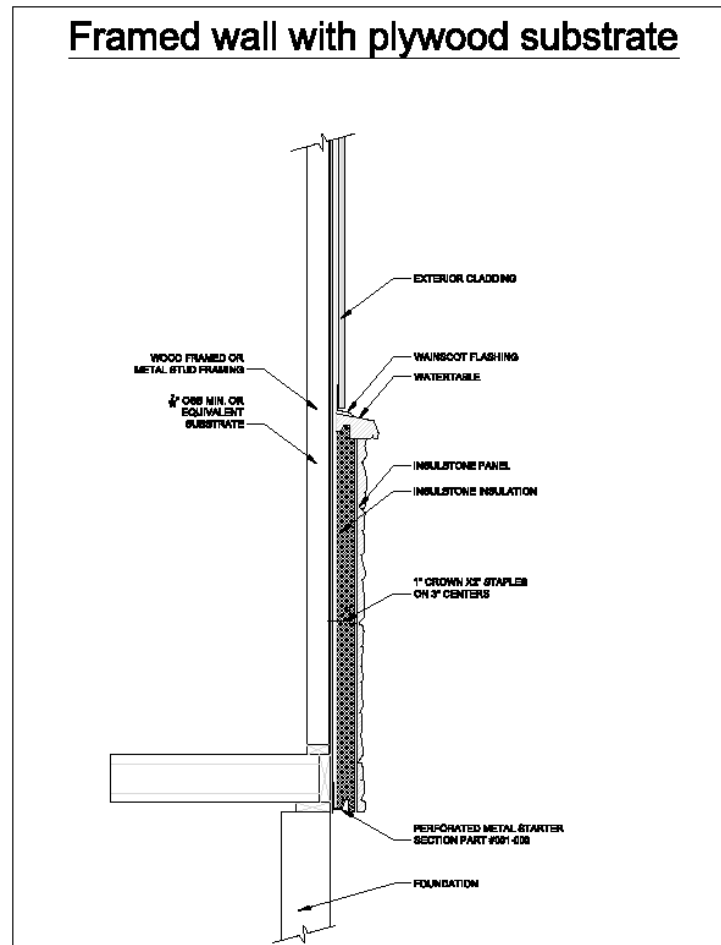
Above the Window Trim:

The above the window flashing is commonly used in the following situations:

- Above windows
- Above doors
- Above protrusions
- When the stone begins part way up a wall
- Under InsulStone panels that are exposed at the bottom to cover the styrofoam backing from visual contact or contact by direct sunlight.
- Above the window trim is sometimes used as a wainscot transition flashing in lieu of a stone cap.



Wainscot Flashing



The wainscot flashing is designed to be installed adjacent to the structural wall cladding (usually OSB) and lap over the wainscot cap stone to prevent water from penetrating the veneer system. A bead of sealant is usually required by local building officials between the flashing and the cap. The weather protective barrier and the siding material or cladding used above the flashing should overlap the flashing.

This flashing material is commonly used for other wall penetrations and protrusions when necessary.

Overhang/Soffit termination

Sidewall terminations

Chimney Chase Terminations

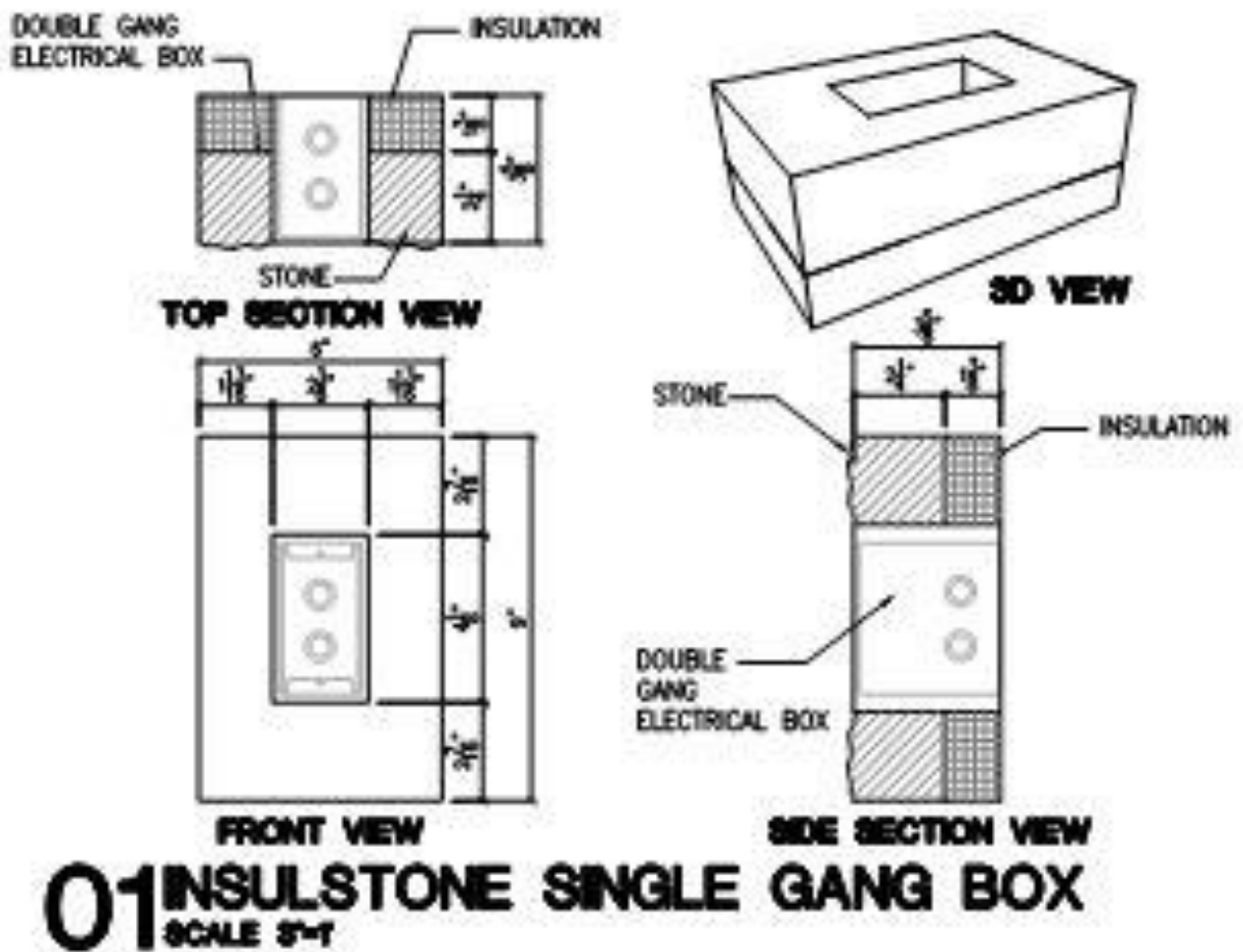
Column Base Terminations

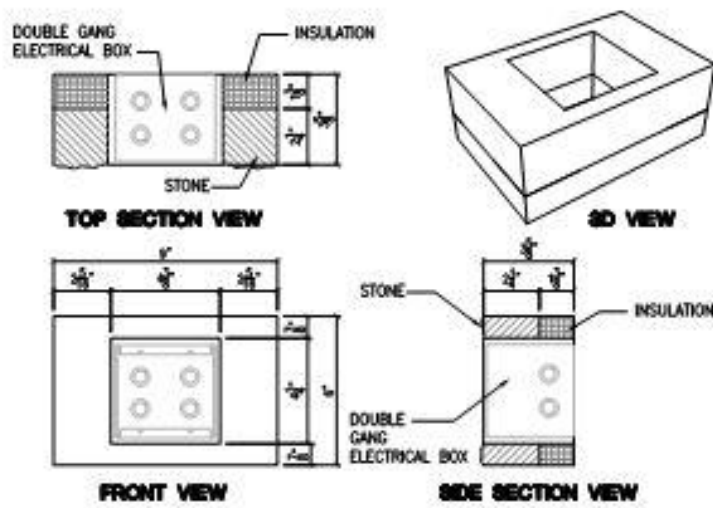
Light Fixtures

Electrical Outlets

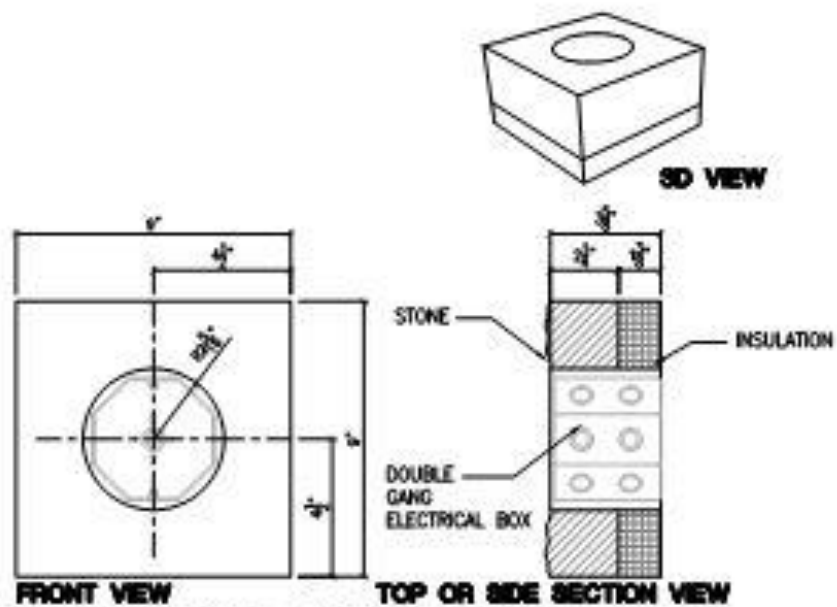
Dryer Vents

Deck Terminations





02 INSULSTONE DOUBLE GANG BOX
SCALE 3/4"=1"



03 INSULSTONE LIGHT BOX
SCALE 3/4"=1"

Maintenance and Care

Cleaning:

Wash with soapy water and soft brush or sponge. Low pressure water spray may be used, but avoid high pressure washing.

Warning: Avoid petroleum products and harsh chemicals.

Sealing and caulking:

Check annually and repair if necessary.

Efflorescence:

Cement products and aggregates contain calcium and water on the finished stone may release chalk colored residue. This residue will wash off with soapy water. It may return once or twice on new manufactured stone, but will eventually go away. Please be patient as it is a temporary situation.

WHAT DOES THE LIMITED WARRANTY COVER?

InsulStone, Inc., DBA ICAP-USA™ warrants to the original purchaser/consumer at the time the products are installed, to be free from defects in material and workmanship in the course of manufacture.

This warranty is limited to the terms and conditions, exclusions and limitations, requirements and legal rights stated in this Warranty. In the event of repair or replacement under the terms of this warranty, the original warranty shall be limited to replacement or repair of the defective product and will extend for the balance of the warranty period from the date of the original installation. The coverage offered by this Express Limited Materials Warranty to the original purchaser and may only be transferrable to subsequent purchasers with the prior written approval of ICAPUSA.

WHO IS COVERED AND HOW LONG DOES THE COVERAGE LAST?

Should a material defect occur within 5 years of the original purchase by the registered purchaser, the manufacturer will in its sole discretion, replace the defective product before it is installed, or, during the first 5 years, reimburse the party for losses up to no more than twice the manufacturers selling price of the defective portion of the Product. During the 6th through 25th year, the warranty coverage shall be reduced by 5% per year such that after the 25th year all warranty coverage shall cease and the warranty coverage shall be terminated. The Manufacturer's replacement of the defective product or granting of a refund pursuant this Warranty shall be in its sole discretion and the sole exclusive remedy available to the covered party with respect to any defect. MANUFACTURER WILL NOT REFUND OR PAY ANY COSTS IN CONNECTION WITH LABOR OR ACCESSORY MATERIALS.

WHAT DOESN'T THIS WARRANTY COVER?

This warranty does not cover damage of any kind resulting from: Faulty or improper installation

Any and all labor for repair or replacement of warranted parts.

Shipping costs for replacement parts.

Movement, waving, buckling, or other distortions.

Damage from impact or contact with foreign objects, chemicals, etc.

Damage from failure to properly maintain the Product.

Installation of the Product in direct contact with dissimilar materials or use of incompatible caulking, adhesives, fumes, vapors or coatings.

Changes in the surface color resulting from exposure to the elements (i.e. soiling, staining or discoloring resulting from local conditions which InsulStone, Inc. has no control over.

Settlement or shrinkage of the property or structure.

Fire or heat from barbecues, heaters, vents, etc.

Lightning, hurricane, tornado, windstorm, earthquake, hail, snow or ice accumulation, or other acts of God.

Surface deterioration from air pollution, or seacoast environment.

Abuse, misuse, vandalism, or abrasion.

Product that has been painted, coated, colored or altered.

Chips, cracks that do not affect the performance of the Product are not covered under this warranty.

Any other causes beyond InsulStone/ICAP-USA's reasonable control.

Substitution or use of specialty parts not listed in ICAP-USA's standard parts and price list.

OTHER LIMITATIONS:

ICAP-USA cladding is designed for use as exterior cladding installed in accordance with its published installation instructions and should not be used as roofing, floors, on ceilings, or in locations that require water tight protection.

We reserve the right to discontinue or change any design, color or texture, of any of our products at any time and without notice or liability. If, for any reason, you make a warranty claim and the product type originally installed is no longer available, we may substitute another product determined by us to be of comparable quality and price.

There are no warranties expressed, implied or written that ICAP-USA accepts responsibility for other than this Warranty.

4. ICAP-USA IS NOT RESPONSIBLE FOR ANY CONSEQUENTIAL OR INCIDENTAL DAMAGES ARISING OUT OF ANY BREACH OF THIS EXPRESSED WARRANTY, OR ANY OTHER ORAL, WRITTEN OR IMPLIED WARRANTY THAT MAY APPLY TO YOUR PURCHASE, AS IT RELATES TO OUR PRODUCTS.

5. THIS IS YOUR EXCLUSIVE WARRANTY AND IS IN LIEU OF ALL OTHER WARRANTIES, EXPRESSED OR IMPLIED, INCLUDING BUT NOT LIMITED TO IMPLIED WARRANTIES OF MERCHANTABILITY AND FITNESS.

This warranty gives you specific legal rights. You may also have other rights which vary from state to state. SOME STATES DO NOT ALLOW THE EXCLUSION OR LIMITATION OF INCIDENTAL OR CONSEQUENTIAL DAMAGES, SO THE ABOVE LIMITATION OR EXCLUSION MAY NOT APPLY TO YOU. FAILURE OF PART OF THIS WARRANTY TO COMPLY WITH LOCAL OR FEDERAL LAW DOES NOT VOID DOCUMENT IN ITS ENTIRETY. This warranty shall be interpreted under the laws of the State of Idaho.

HOW DO I REGISTER THIS WARRANTY?

One application per property location where ICAP-USA/InsulStone, Inc. cladding is installed must be completed and mailed to ICAP-USA/InsulStone, Inc. P.O. Box 1258 Meridian, ID 83680 within 30 days after the original installation has been completed. The notice should include the following: (1) Name of owner

(2) Address of property or location of the installation (3) Date of purchase (4) Proof of purchase

HOW DO YOU SUBMIT A WARRANTY CLAIM?

You must submit a claim in writing with us within the warranty period and within a reasonable period of time after the defect is discovered. To initiate the claim, please go to www.icap-usa.com, contact us at sales.icap@gmail.com or by mail at:

ICAP-USA/InsulStone, Inc., PO Box 1258, Meridian, ID 83680. Phone#: 208.895.8557

ANY REPAIR OF THE PRODUCTS UNDERTAKEN WITHOUT PRIOR WRITTEN AUTHORIZATION FROM ICAP-USA/INSULSTONE, INC. PRIOR TO RECEIVING WRITTEN APPROVAL FROM INSULSTONE, INC. WILL VOID THIS WARRANTY.

This Warranty is effective as of 09/01/2016 and replaces all prior warranties.

Owner _____

Installation Address: _____

Name of installing Contractor: _____ Date Installed: _____

Date of Completion: _____

Phone # _____ Owner Signature _____

Return a copy of this Limited Materials Warranty to ICAP-USA PO Box 1258 Meridian, ID 83680